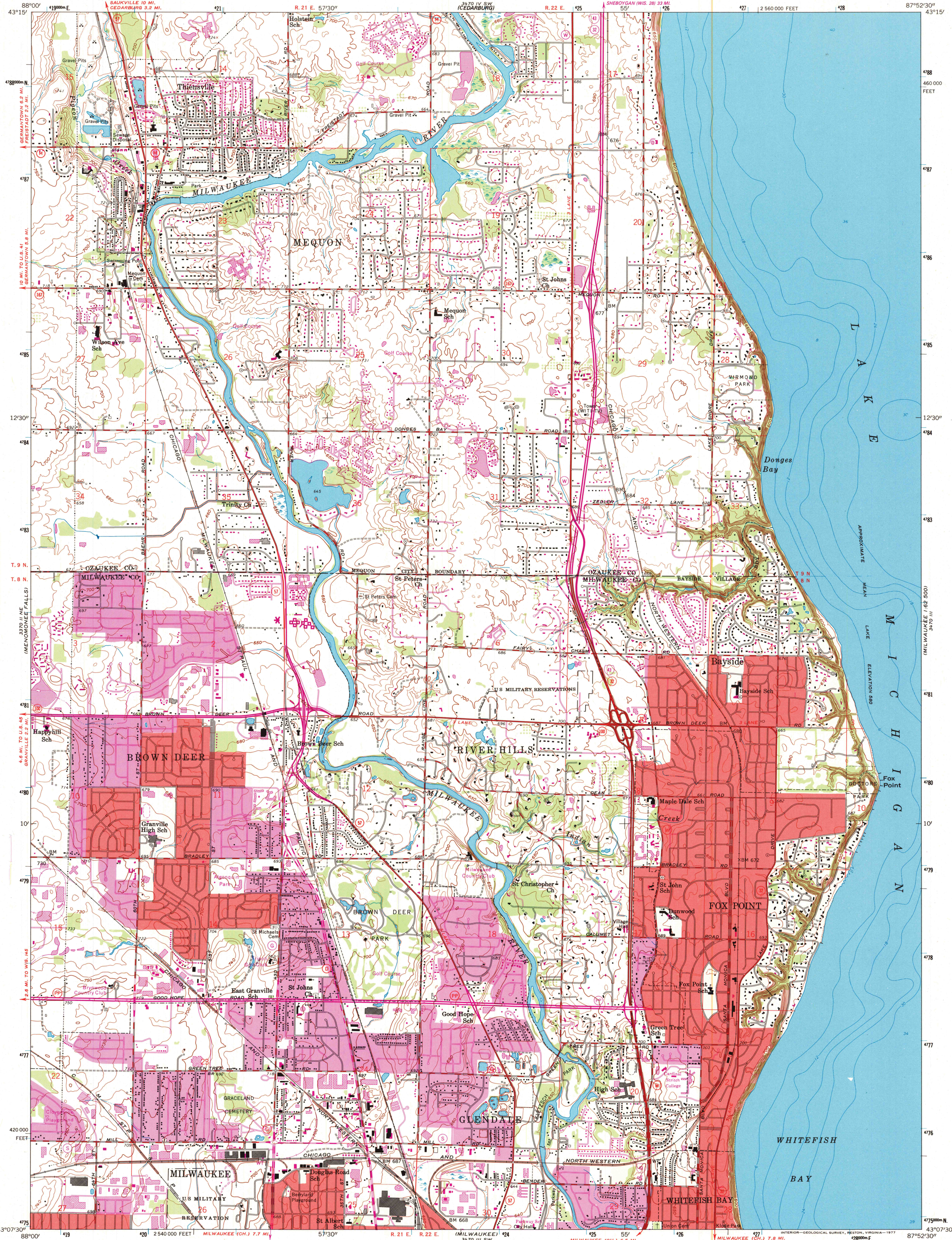


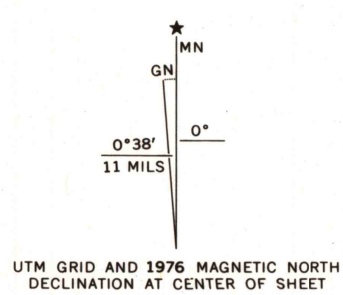
UNITED STATES
DEPARTMENT OF THE INTERIOR
GEOLOGICAL SURVEY

THIENSVILLE QUADRANGLE
WISCONSIN
7.5 MINUTE SERIES (TOPOGRAPHIC)
NW 1/4 MILWAUKEE 15' QUADRANGLE

3470 IV NW
WASHINGTON
1:62,500



Mapped, edited, and published by the Geological Survey
Control by USGS, USC&GS, and City of Milwaukee
Topography from aerial photographs by photogrammetric methods
Aerial photographs taken 1954-1955. Field check 1958
Hydrography compiled from U. S. Lake Survey chart 74 (1957)
Polyconic projection. 1927 North American datum
10,000-foot grid based on Wisconsin coordinate system, south zone
1000-meter Universal Transverse Mercator grid ticks,
zone 16, shown in blue
Red tint indicates areas in which only landmark buildings are shown
Revisions shown in purple compiled from aerial photographs
taken 1971 and 1976. This information not field checked
Purple tint indicates extension of urban areas



SCALE 1:24,000
CONTOUR INTERVAL 10 FEET
NATIONAL GEODETIC VERTICAL DATUM OF 1929
DEPTH CURVES AND SOUNDINGS IN FEET-DATUM IS 578 FEET
THIS MAP COMPLIES WITH NATIONAL MAP ACCURACY STANDARDS
FOR SALE BY U. S. GEOLOGICAL SURVEY, RESTON, VIRGINIA 22092
AND WISCONSIN GEOLOGICAL AND NATURAL HISTORY SURVEY, MADISON, WISCONSIN 53706
A FOLDER DESCRIBING TOPOGRAPHIC MAPS AND SYMBOLS IS AVAILABLE ON REQUEST



ROAD CLASSIFICATION
Heavy-duty ——— Light-duty ———
Medium-duty ——— Unimproved dirt ———
U. S. Route ——— State Route ———
Interstate Route ———

THIENSVILLE, WIS.
NW 1/4 MILWAUKEE 15' QUADRANGLE
N 4307.5 — W 8752.5/7.5
1958
PHOTOREVISED 1971 AND 1976
AMS 3470 III NW—SERIES V861

USGS HISTORICAL
MAP ARCHIVES
MAY 31 1998
REC'D FILE COPY

