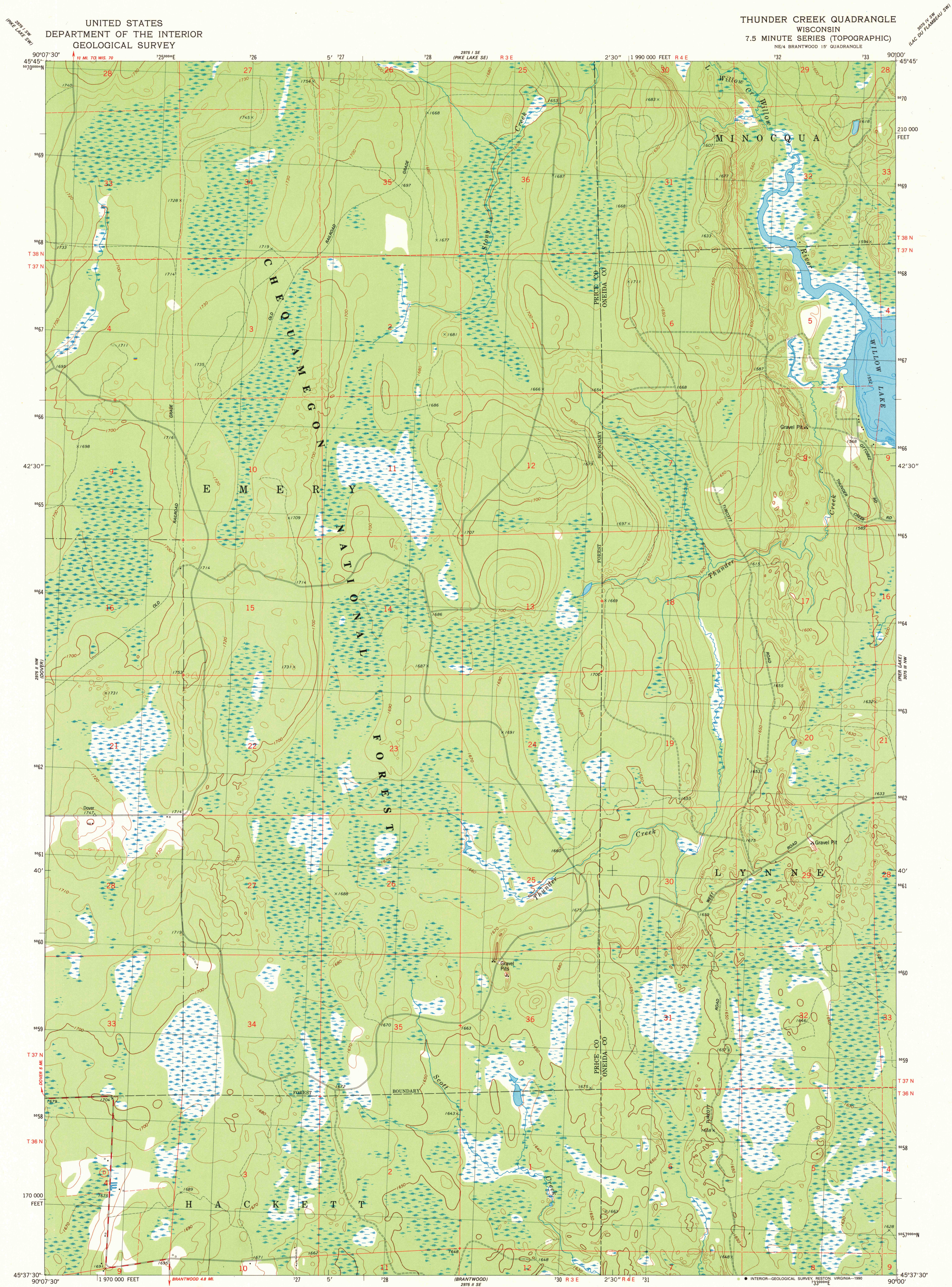


UNITED STATES  
DEPARTMENT OF THE INTERIOR  
GEOLOGICAL SURVEY

THUNDER CREEK QUADRANGLE  
WISCONSIN  
7.5 MINUTE SERIES (TOPOGRAPHIC)



Mapped, edited, and published by the Geological Survey  
Control by USGS and NOS/NOAA  
Topography by photogrammetric methods from aerial photographs  
taken 1974. Field checked 1975. Map edited 1980  
Hydrography compiled from information furnished by  
Wisconsin Department of Natural Resources  
Projection and 10,000-foot grid ticks: Wisconsin coordinate  
system, north zone (Lambert conformal conic)  
1000-meter Universal Transverse Mercator grid, zone 15  
1927 North American Datum  
To place on the predicted North American Datum 1983  
move the projection lines 6 meters north and  
11 meters east as shown by dashed corner ticks  
There may be private inholdings within the boundaries of  
the National or State reservations shown on this map

Map photoinspected 1981  
No major culture or drainage changes observed

SCALE 1:24 000  
1 000 2000 3000 4000 5000 6000 7000 FEET  
1 5 10 0 KILOMETER  
CONTOUR INTERVAL 10 FEET  
NATIONAL GEODETIC VERTICAL DATUM OF 1929

THIS MAP COMPLIES WITH NATIONAL MAP ACCURACY STANDARDS  
FOR SALE BY U.S. GEOLOGICAL SURVEY, DENVER, COLORADO 80225, OR RESTON, VIRGINIA 22092  
AND WISCONSIN GEOLOGICAL AND NATURAL HISTORY SURVEY, MADISON, WISCONSIN 53706  
A FOLDER DESCRIBING TOPOGRAPHIC MAPS AND SYMBOLS IS AVAILABLE ON REQUEST



ROAD CLASSIFICATION  
Primary highway, hard surface  
Secondary highway, hard surface  
Light-duty road, hard or improved surface  
Unimproved road  
Interstate Route  
U.S. Route  
State Route

THUNDER CREEK, WIS.  
NE/4 BRANTWOOD 15' QUADRANGLE  
N4537.5-W9000/7.5

1980  
PHOTOINSPECTED 1981  
DMA 2975 II NE-SERIES V861

USGS NMD HISTORICAL MAP  
DEC 2 1990  
REC'D FILE COPY