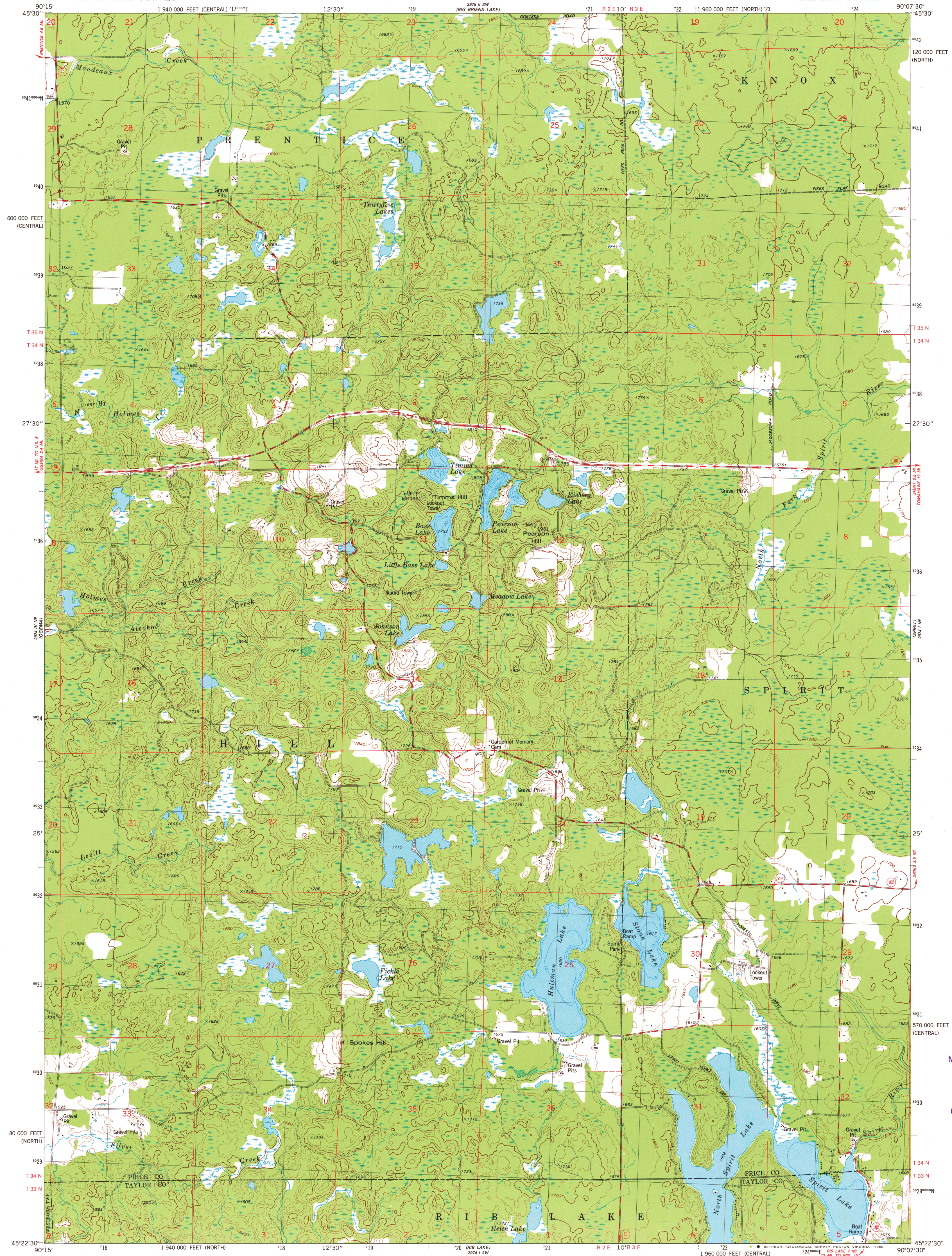


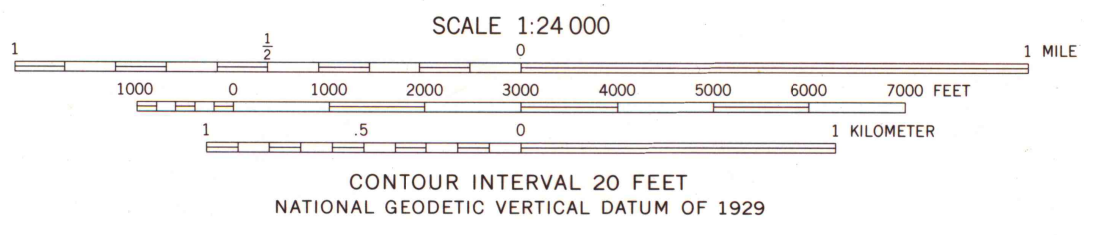
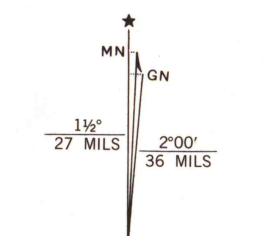
UNITED STATES
DEPARTMENT OF THE INTERIOR
GEOLOGICAL SURVEY

TIMMS HILL QUADRANGLE
WISCONSIN
7.5 MINUTE SERIES (TOPOGRAPHIC)



Maped, edited, and published by the Geological Survey

Control by USGS and NOS/NOAA
Topography by photogrammetric methods from aerial photographs taken 1974. Field checked 1975. Map edited 1979
Hydrography compiled from information furnished by Wisconsin Department of Natural Resources
Projection: Wisconsin coordinate system, north zone (Lambert conformal conic)
10,000-foot grid ticks based on Wisconsin coordinate system, north and central zones
1000-meter Universal Transverse Mercator grid, zone 15 1927 North American Datum
To place on the predicted North American Datum 1983 move the projection lines 6 meters north and 11 meters east as shown by dashed corner ticks
Fine red dashed lines indicate selected fence and field lines where generally visible on aerial photographs. This information is unchecked



ROAD CLASSIFICATION

Primary highway, hard surface	Light-duty road, hard or improved surface
Secondary highway, hard surface	Unimproved road
Interstate Route	U. S. Route
	State Route

THIS MAP COMPLIES WITH NATIONAL MAP ACCURACY STANDARDS FOR SALE BY U. S. GEOLOGICAL SURVEY, RESTON, VIRGINIA 22092 AND WISCONSIN GEOLOGICAL AND NATURAL HISTORY SURVEY, MADISON, WISCONSIN 53706 A FOLDER DESCRIBING TOPOGRAPHIC MAPS AND SYMBOLS IS AVAILABLE ON REQUEST

TIMMS HILL, WIS.
NW/4 RIB LAKE 15' QUADRANGLE
N4522.5-W9007.5/7.5

1979
DMA 2974 1 NW-SERIES V861

MAP AND AIR PHOTO LIBRARY
OCT 7 1980
University of Wisconsin Madison

1979
Copy
1-1