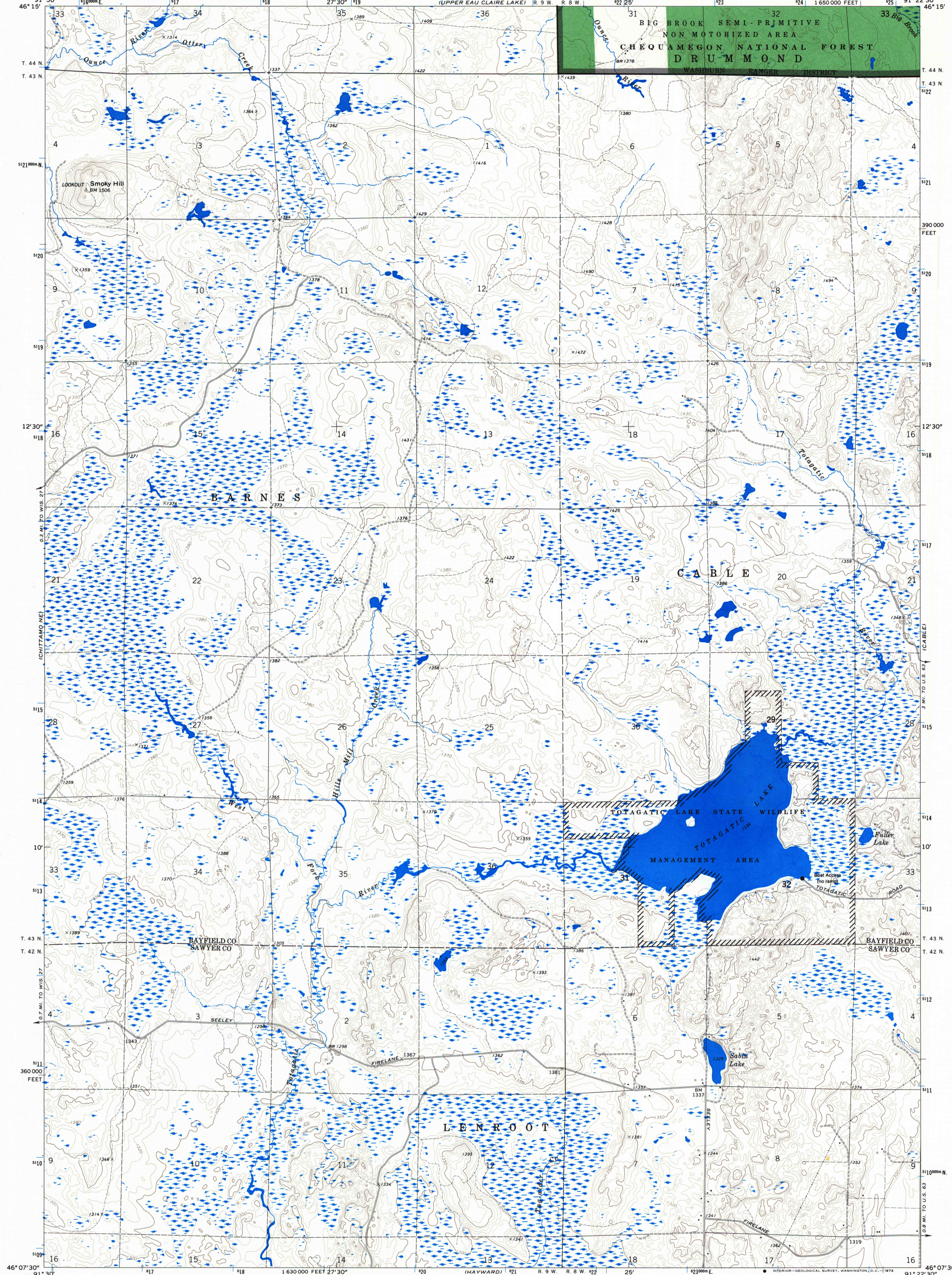


U.S. Depository Copy
Do Not Discard
JAN 05 1993



Base map prepared by the U.S. Geological Survey in cooperation with the Wisconsin Highway Commission and Wisconsin Geological and Natural History Survey. Control by USGS and USC&GS. Topography by photogrammetric methods from aerial photographs taken 1970. Field checked 1971. Depth curves and soundings compiled from charts furnished by Wisconsin Department of Natural Resources. Polyconic projection. 1927 North American datum 10,000-foot grid based on Wisconsin coordinate system, north zone 1000-meter Universal Transverse Mercator grid ticks, zone 15, shown in blue. Modification to USGS base map by the Geometrics Service Center from 1986 and 1988 aerial photography and 1990 correction guides furnished by the Eastern Region.

SCALE 1:24,000

CONTOUR INTERVAL 10 FEET
DATUM IS MEAN SEA LEVEL

| | | |
|--|-----------------------|----------------------|
| National Forest Boundary | Primary Highway | Interstate Highway |
| National Forest Land as of 1990 | Secondary Highway | U.S. Highway |
| TOWNSHIP AND SECTION LINE CLASSIFICATION | Improved Road, Paved | State Highway |
| Surveyed, Location Reliable | Improved Road, Gravel | County Road |
| Surveyed, Location Approximate | Improved Road, Dirt | Primary Forest Route |
| Unsurveyed, Protraction | Unimproved Road, Dirt | Forest Road |
| | Trail | Forest Trail |

CHEQUAMEGON NATIONAL FOREST
QUADRANGLE LOCATION DIAGRAM

TOTAGATIC LAKE, WIS.
NW/4 HAYWARD 15' QUADRANGLE
N4607.5-W9122.5/7.5
1971
DMA 2776 III NW-SERIES V861

Copies of this map are available for purchase at Forest Supervisor's Headquarters 1170 South 4th Avenue Park Falls, WI 54552

U.S. Depository Copy
DO NOT DISCARD

A.H. ROBINSON
MAP LIBRARY
NOV - 6 1995

University of Wisconsin
Madison

6
4182
LS
524
U55
Sh. 20

113.28: 4217/985/41.01