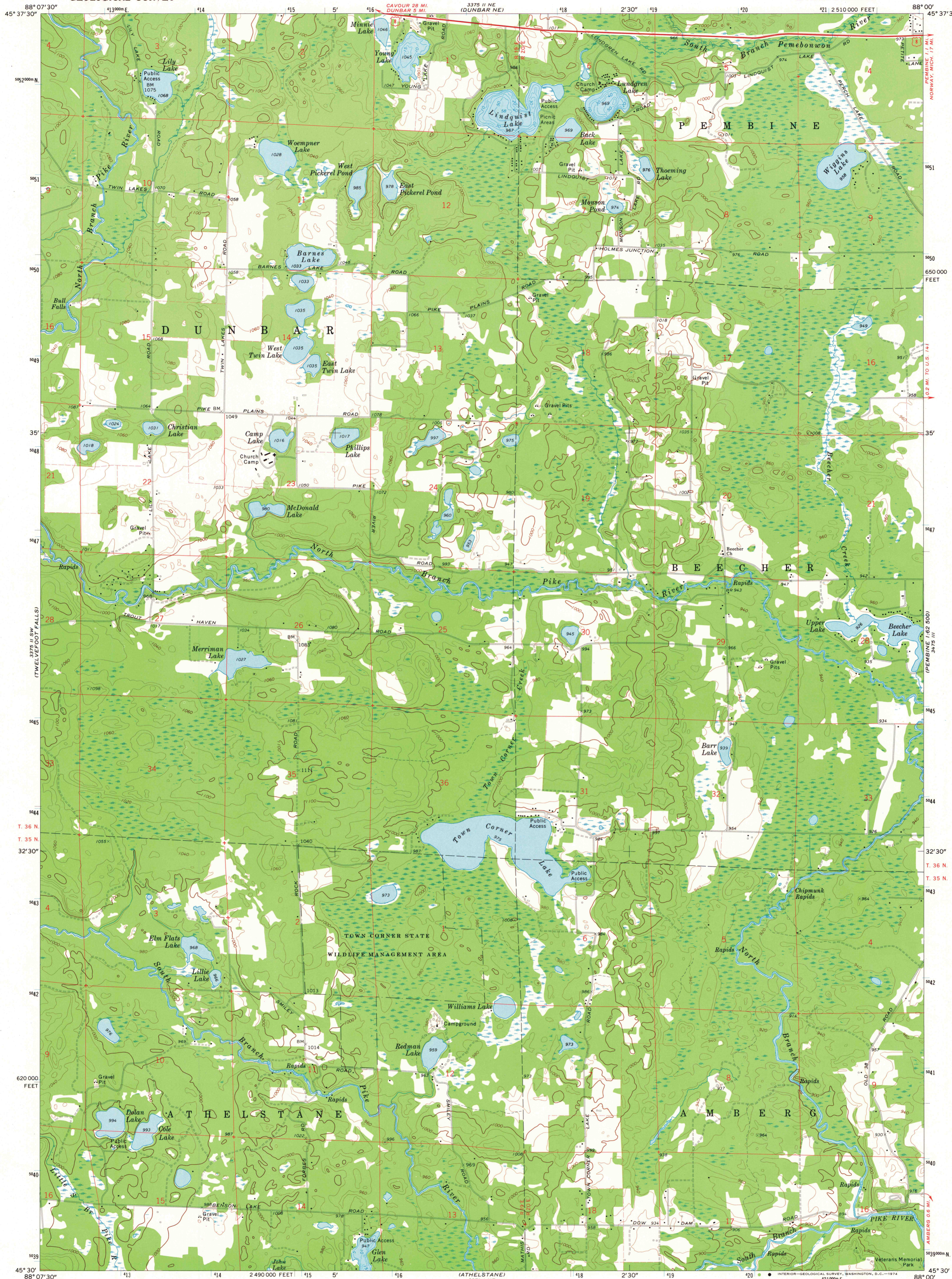
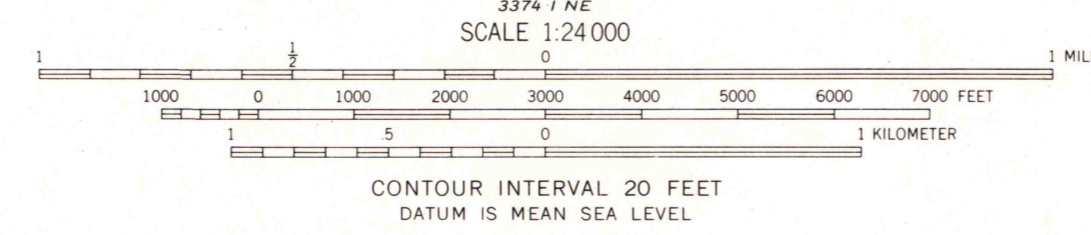


UNITED STATES  
DEPARTMENT OF THE INTERIOR  
GEOLOGICAL SURVEY

TOWN CORNER LAKE QUADRANGLE  
WISCONSIN—MARINETTE CO.  
7.5 MINUTE SERIES (TOPOGRAPHIC)  
SE/4 DUNBAR 15' QUADRANGLE  
21 2510 000 FEET



Mapped, edited, and published by the Geological Survey  
Control by USGS and USC&GS  
Topography by photogrammetric methods from aerial  
photographs taken 1971. Field checked 1972  
Hydrography compiled from information furnished by  
Wisconsin Department of Natural Resources  
Projection and 10,000-foot grid ticks: Wisconsin coordinate  
system, central zone (Lambert conformal conic)  
1000-meter Universal Transverse Mercator grid ticks,  
zone 16, shown in blue. 1927 North American datum  
Fine red dashed lines indicate selected fence and field lines where  
generally visible on aerial photographs. This information is unchecked



ROAD CLASSIFICATION  
Primary highway, hard surface  
Secondary highway, hard surface  
Unimproved road  
Interstate Route  
U. S. Route  
State Route

TOWN CORNER LAKE, WIS.  
SE/4 DUNBAR 15' QUADRANGLE  
N4530—W8800/7.5  
1972  
AMS 3375 II SE—SERIES V861

MAP AND AIR PHOTO  
LIBRARY  
MAY 19 1974

Un: it

1972  
COPY  
1-1