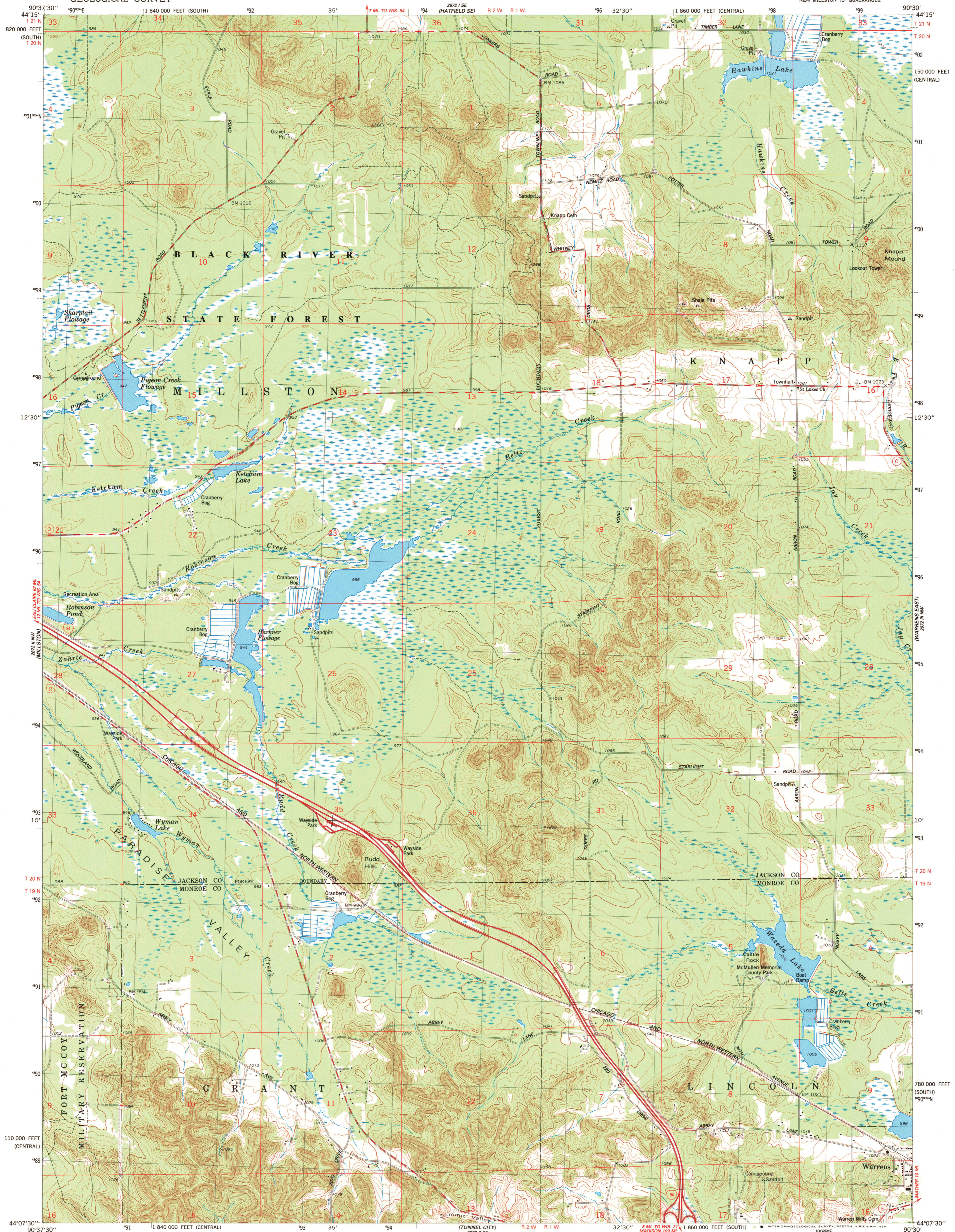
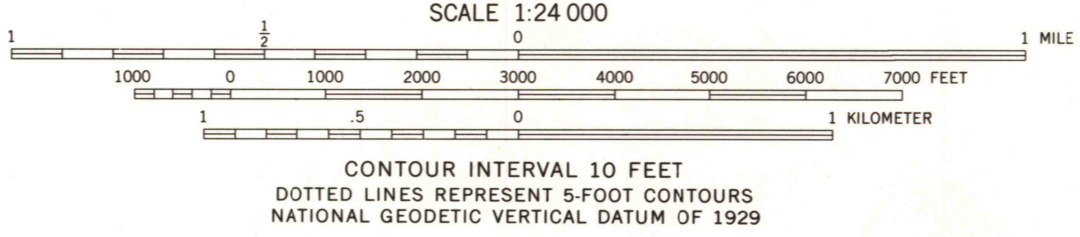
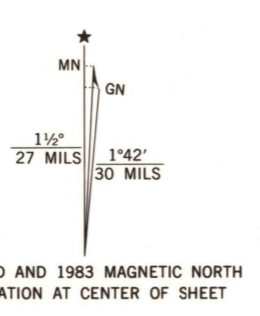


UNITED STATES  
DEPARTMENT OF THE INTERIOR  
GEOLOGICAL SURVEY

WARRENS WEST QUADRANGLE  
WISCONSIN  
7.5 MINUTE SERIES (TOPOGRAPHIC)  
NE 4 MILLSTON 15' QUADRANGLE



Mapped, edited, and published by the Geological Survey  
Control by USGS and NOS/NOAA  
Topography by photogrammetric methods from aerial photographs taken 1978. Field checked 1980. Map edited 1983  
Projection: Wisconsin coordinate system, central zone (Lambert conformal conic)  
10,000-foot grid ticks based on Wisconsin coordinate system, central and south zones  
1000-meter Universal Transverse Mercator grid, zone 15 1927 North American Datum  
To place on the predicted North American Datum 1983 move the projection lines 6 meters north and 11 meters east as shown by dashed corner ticks  
There may be private inholdings within the boundaries of the National or State reservations shown on this map



ROAD CLASSIFICATION

Primary highway, hard surface	Light-duty road, hard or improved surface
Secondary highway, hard surface	Unimproved road
Interstate Route	U. S. Route
	State Route

THIS MAP COMPLIES WITH NATIONAL MAP ACCURACY STANDARDS  
FOR SALE BY U. S. GEOLOGICAL SURVEY, RESTON, VIRGINIA 22092  
AND WISCONSIN GEOLOGICAL AND NATURAL HISTORY SURVEY, MADISON, WISCONSIN 53706  
A FOLDER DESCRIBING TOPOGRAPHIC MAPS AND SYMBOLS IS AVAILABLE ON REQUEST

WARRENS WEST, WIS.  
NE 4 MILLSTON 15' QUADRANGLE  
N4407.5-W90307.5  
1983  
DMA 2872 II NE-SERIES V861

USGS AND HISTORICAL MAP ARCHIVES

MAY 2 1984