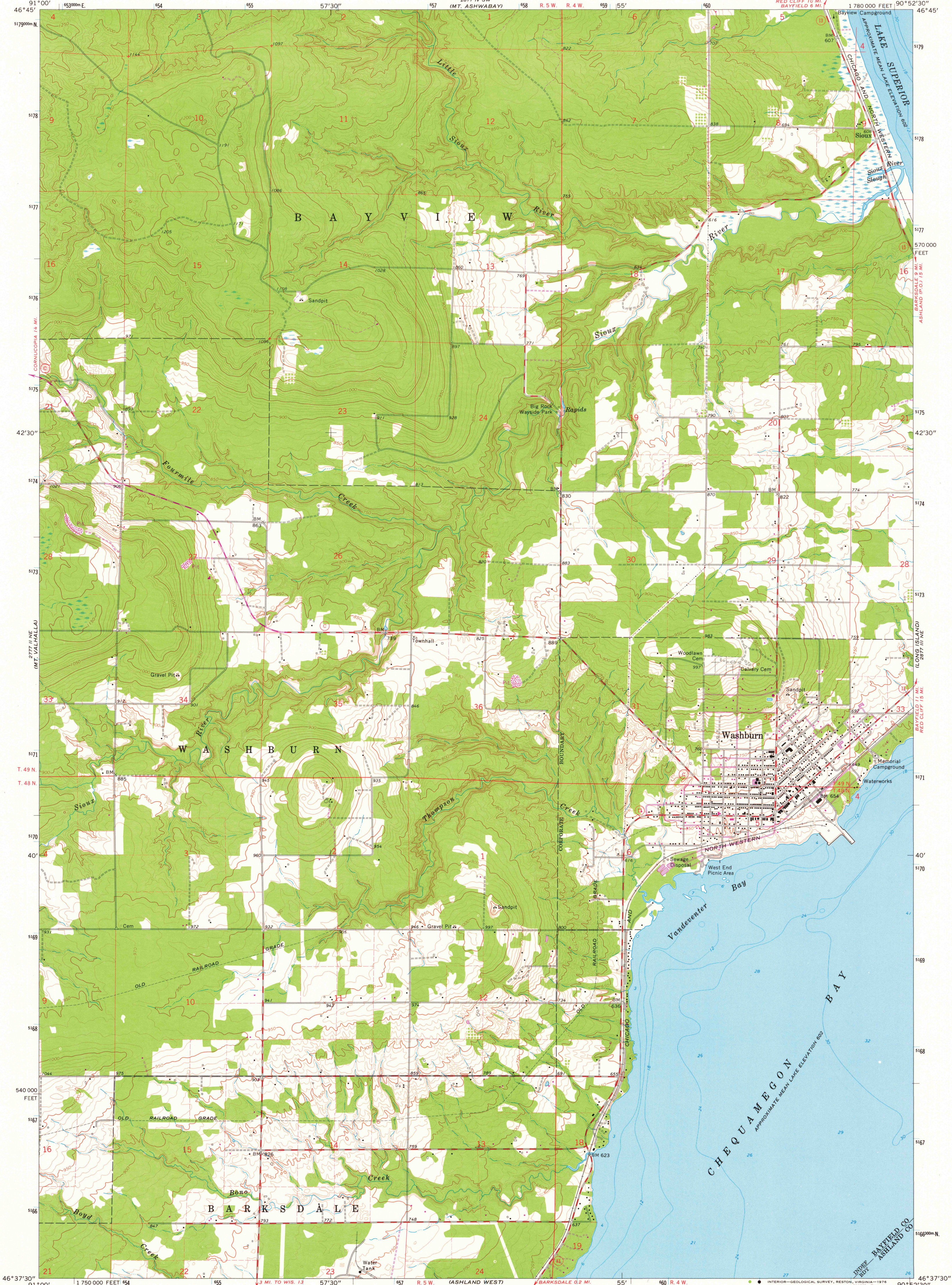


UNITED STATES
DEPARTMENT OF THE INTERIOR
GEOLOGICAL SURVEY

WASHBURN QUADRANGLE
WISCONSIN
7.5 MINUTE SERIES (TOPOGRAPHIC)



Mapped, edited, and published by the Geological Survey in cooperation with State of Wisconsin agencies

Control by USGS and USC&GS

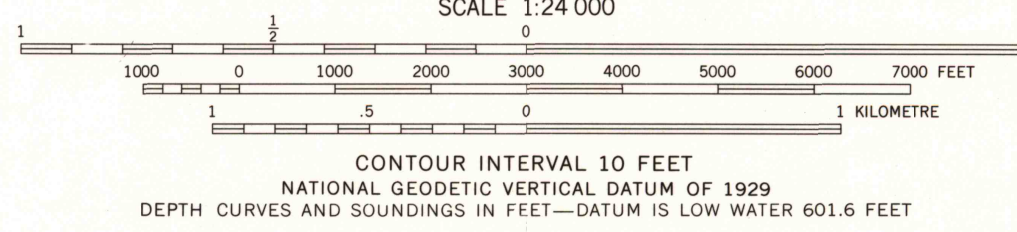
Topography by photogrammetric methods from aerial photographs taken 1963. Field checked 1964

Selected hydrographic data compiled from U.S. Lake Survey Charts 961 (1961) and 964 (1962)
This information is not intended for navigational purposes

Polyconic projection. 1927 North American datum
10,000-foot grid based on Wisconsin coordinate system, north zone
1000-metre Universal Transverse Mercator grid ticks, zone 15, shown in blue

Fine red dashed lines indicate selected fence and field lines where generally visible on aerial photographs. This information is unchecked

UTM GRID AND 1975 MAGNETIC NORTH DECLINATION AT CENTER OF SHEET



THIS MAP COMPLIES WITH NATIONAL MAP ACCURACY STANDARDS FOR SALE BY U.S. GEOLOGICAL SURVEY, RESTON, VIRGINIA 22092 AND WISCONSIN GEOLOGICAL AND NATURAL HISTORY SURVEY, MADISON, WISCONSIN 53706
A FOLDER DESCRIBING TOPOGRAPHIC MAPS AND SYMBOLS IS AVAILABLE ON REQUEST

Revisions shown in purple compiled from aerial photographs taken 1975. This information not field checked

ROAD CLASSIFICATION
Medium-duty ——— Light-duty ———
Unimproved dirt ———
State Route ○



USGS WASHBURN, WIS.
Historical File NW/4 ASHLAND 15' QUADRANGLE N4637.5—W9052.5/7.5
Topographic Division

1964 PHOTOREVISED 1975
AMS 2877 III NW—SERIES V861

JAN 19 1977

2800