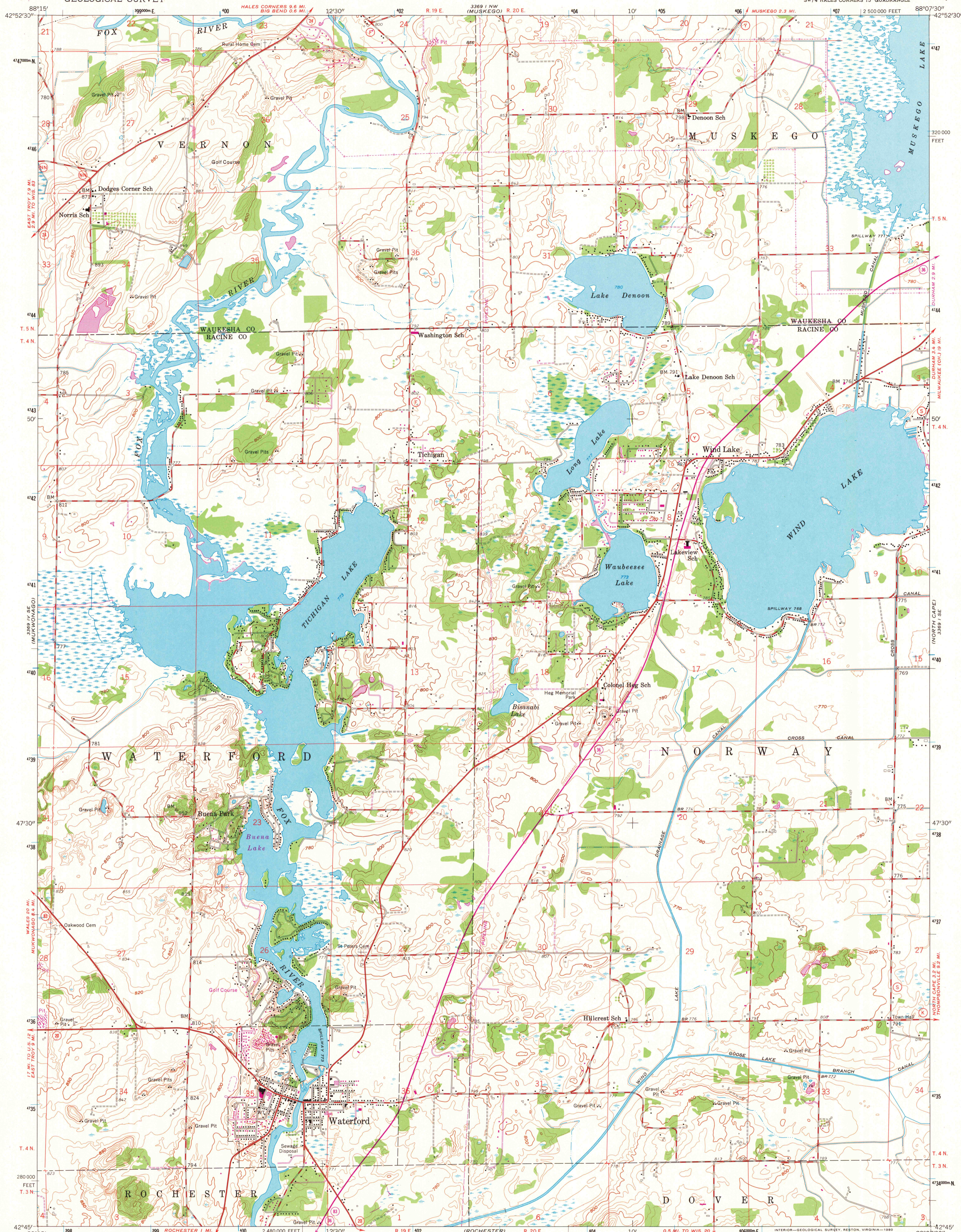
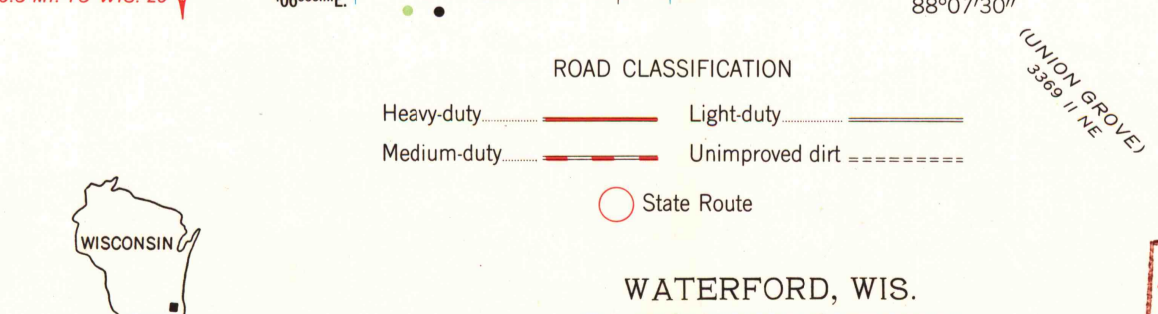
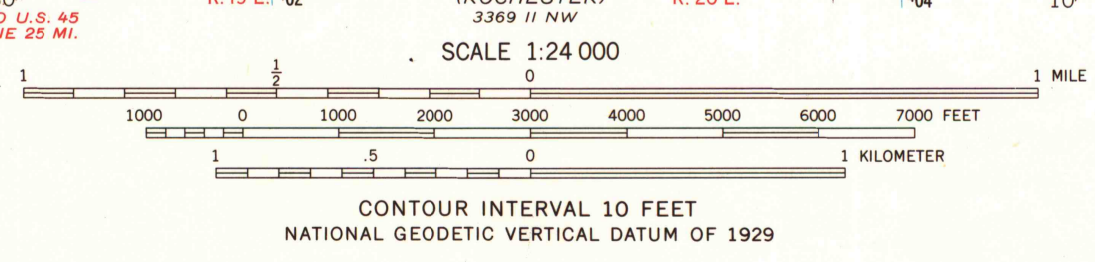
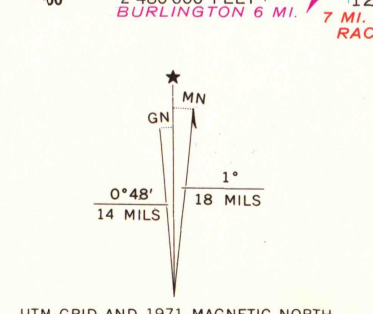


UNITED STATES
DEPARTMENT OF THE INTERIOR
GEOLOGICAL SURVEY

WATERFORD QUADRANGLE
WISCONSIN
7.5 MINUTE SERIES (TOPOGRAPHIC)
SW/4 HALES CORNERS 15' QUADRANGLE



Mapped, edited, and published by the Geological Survey
Control by USGS and USC&GS
Topography from aerial photographs by photogrammetric methods
Aerial photographs taken 1954-1955. Field check 1959
Polyconic projection. 1927 North American datum
10,000-foot grid based on Wisconsin coordinate system, south zone
1000-meter Universal Transverse Mercator grid ticks,
zone 16, shown in blue
Revisions shown in purple compiled from aerial photographs
taken 1971. This information not field checked
To place on the predicted North American Datum 1983
use the projection lines 3 meters north and
6 meters east as shown by dashed corner ticks
Map photoinspected 1976
No major culture or drainage changes observed



THIS MAP COMPLIES WITH NATIONAL MAP ACCURACY STANDARDS
FOR SALE BY U. S. GEOLOGICAL SURVEY, RESTON, VIRGINIA 22092
AND WISCONSIN GEOLOGICAL AND NATURAL HISTORY SURVEY, MADISON, WISCONSIN 53706
A FOLDER DESCRIBING TOPOGRAPHIC MAPS AND SYMBOLS IS AVAILABLE ON REQUEST

WATERFORD, WIS.
SW/4 HALES CORNERS 15' QUADRANGLE
N 4245-W 8807.5/7.5
1959
PHOTOREVISED 1971
AMS 3369 1 SW-SERIES V861
PHOTOINSPECTED 1976,

MAP AND AIR PHOTO
LIBRARY
JAN 16 1981
University of Wisconsin
Madison

1976
COPY
1-1