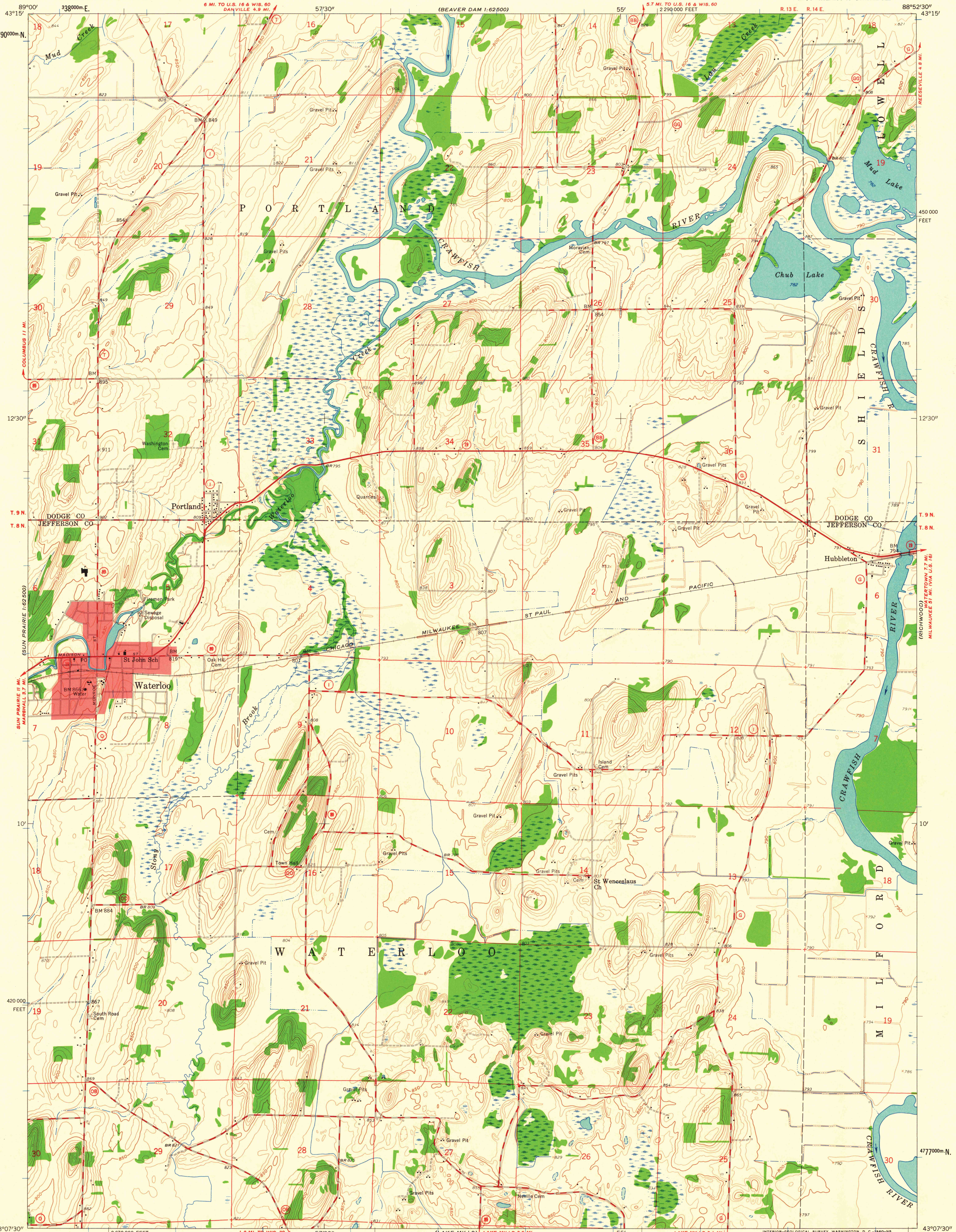
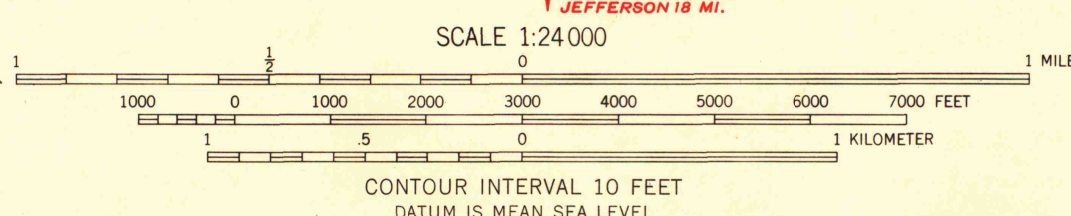


UNITED STATES
DEPARTMENT OF THE INTERIOR
GEOLOGICAL SURVEY

WATERLOO QUADRANGLE
WISCONSIN
7.5 MINUTE SERIES (TOPOGRAPHIC)
NW 1/4 WATERLOO 15' QUADRANGLE



Mapped, edited, and published by the Geological Survey
Control by USGS and USC&GS
Topography from aerial photographs by photogrammetric methods
Aerial photographs taken 1954-1955. Field check 1959
Polyconic projection. 1927 North American datum
10,000-foot grid based on Wisconsin coordinate system, south zone
1000-meter Universal Transverse Mercator grid ticks,
zone 16, shown in blue
Red tint indicates areas in which only
landmark buildings are shown



ROAD CLASSIFICATION

Heavy-duty	Light-duty
Medium-duty	Unimproved dirt
○ State Route	



APR 29 1971

WATERLOO, WIS.
NW 1/4 WATERLOO 15' QUADRANGLE
N 4307.5-W 8852.5/7.5

1959

THIS MAP COMPLIES WITH NATIONAL MAP ACCURACY STANDARDS
FOR SALE BY U. S. GEOLOGICAL SURVEY, WASHINGTON 25, D. C.
AND BY THE WISCONSIN GEOLOGICAL AND NATURAL HISTORY SURVEY, MADISON 6, WISCONSIN
A FOLDER DESCRIBING TOPOGRAPHIC MAPS AND SYMBOLS IS AVAILABLE ON REQUEST

1959
copy
1-1
replacement