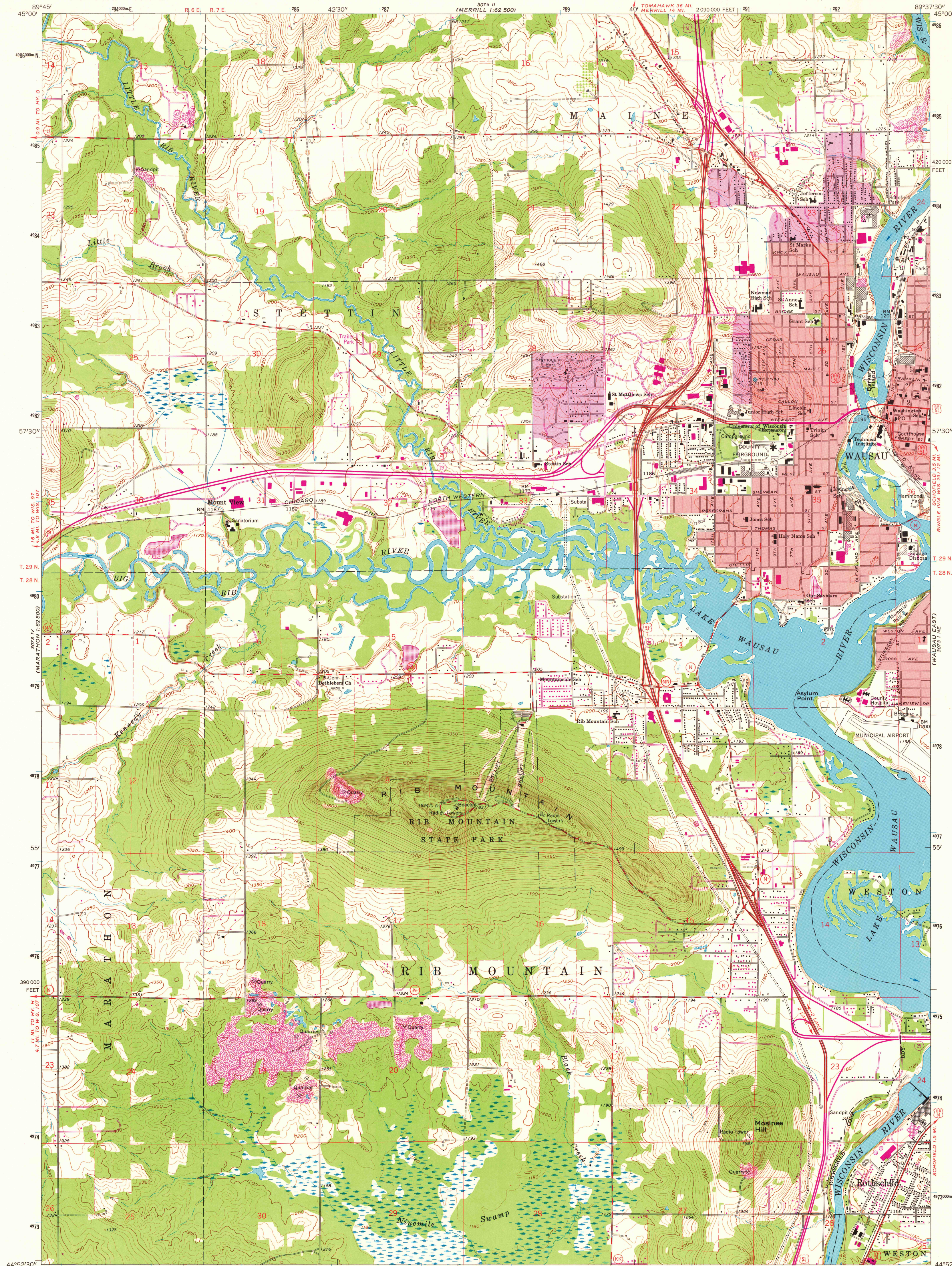


UNITED STATES
DEPARTMENT OF THE INTERIOR
GEOLOGICAL SURVEY

WAUSAU WEST QUADRANGLE
WISCONSIN—MARATHON CO.
7.5 MINUTE SERIES (TOPOGRAPHIC)
NW 1/4 WAUSAU 15' QUADRANGLE



Maped, edited, and published by the Geological Survey
in cooperation with State of Wisconsin agencies
Control by USGS and USC&GS

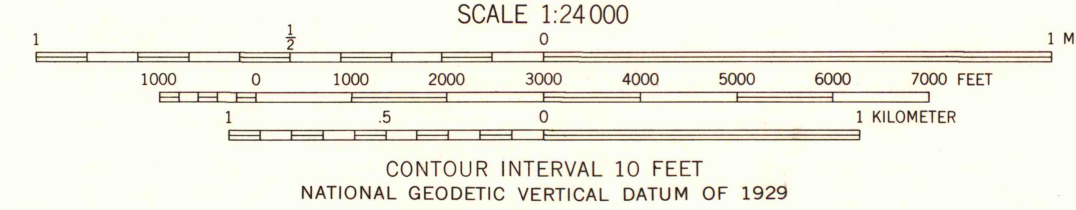
Topography by photogrammetric methods from aerial
photographs taken 1962. Field checked 1963

Polyconic projection. 1927 North American datum
10,000-foot grid based on Wisconsin coordinate system, central zone
1000-meter Universal Transverse Mercator grid ticks,
zone 16, shown in blue

Red tint indicates areas in which only landmark buildings are shown
Fine red dashed lines indicate selected fence and field lines where
generally visible on aerial photographs. This information is unchecked

Revisions shown in purple compiled from aerial photographs
taken 1976 and other source data. This information
not field checked. Map edited 1978

UTM GRID AND 1978 MAGNETIC NORTH
DECLINATION AT CENTER OF SHEET



THIS MAP COMPLIES WITH NATIONAL MAP ACCURACY STANDARDS
FOR SALE BY U. S. GEOLOGICAL SURVEY, RESTON, VIRGINIA 22092
AND BY THE WISCONSIN GEOLOGICAL AND NATURAL HISTORY SURVEY, MADISON, WISCONSIN 53706
A FOLDER DESCRIBING TOPOGRAPHIC MAPS AND SYMBOLS IS AVAILABLE ON REQUEST



ROAD CLASSIFICATION
Heavy-duty ——— Light-duty ———
Medium-duty ——— Unimproved dirt ———
U. S. Route ——— State Route ———

WAUSAU WEST, WIS.

NW 1/4 WAUSAU 15' QUADRANGLE
N4452.5—W8937.5/7.5

1963
PHOTOREVISED 1978
AMS 3073 1 NW—SERIES V861

MAP AND AIR PHOTO
LIBRARY

FEB 21 1979

University of Wisconsin
Madison

1978
copy
1-1