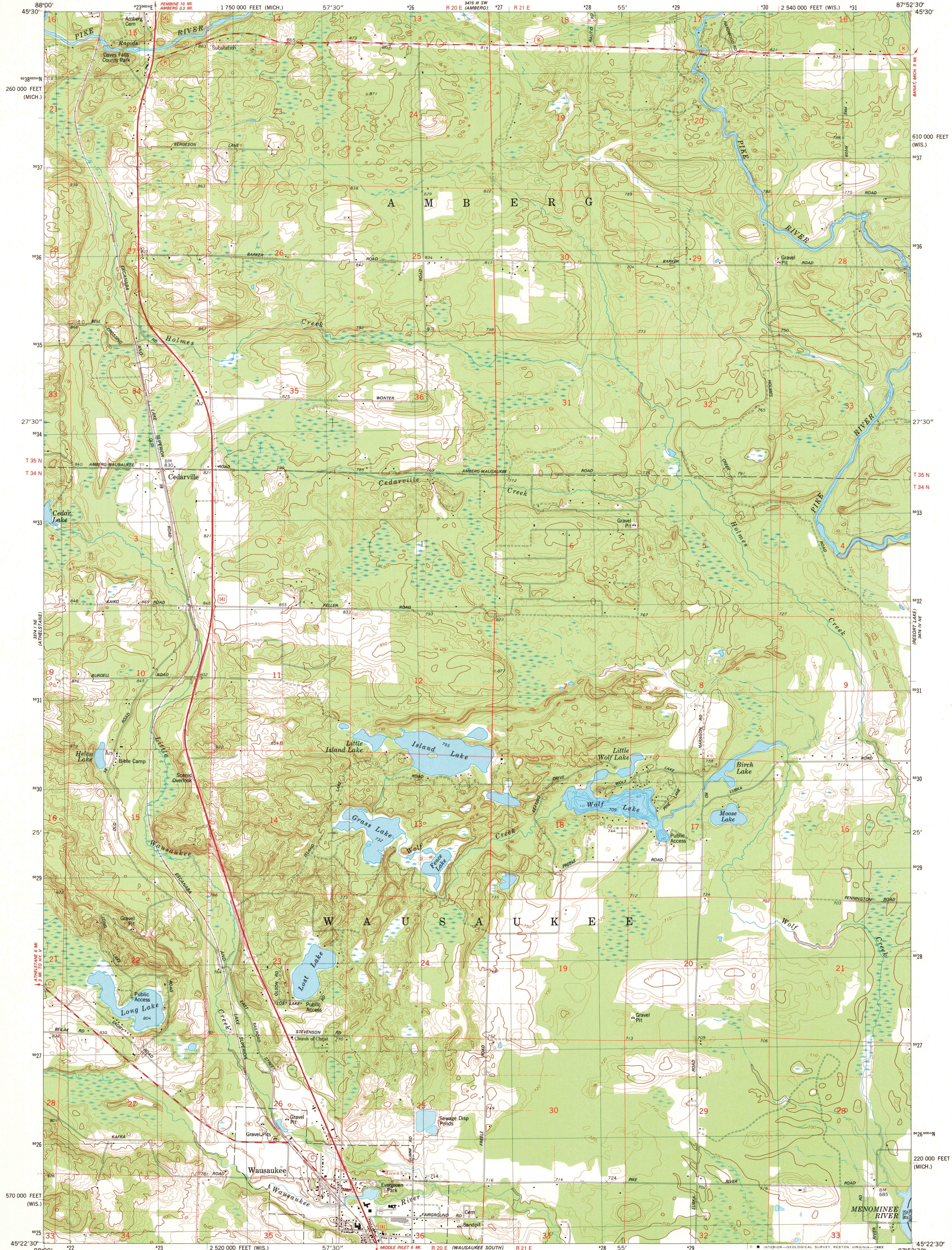
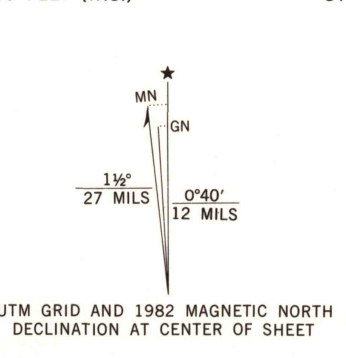


UNITED STATES  
DEPARTMENT OF THE INTERIOR  
GEOLOGICAL SURVEY

WAUSAUKEE NORTH QUADRANGLE  
WISCONSIN-MARINETTE CO.  
7.5 MINUTE SERIES (TOPOGRAPHIC)  
NW/4 WAUSAUKEE 15' QUADRANGLE



Maped, edited, and published by the Geological Survey  
in cooperation with the Wisconsin Division of Highways  
and Wisconsin Geological and Natural History Survey  
Control by USGS and NOS/NOAA  
Topography by photogrammetric methods from aerial photographs  
taken 1954 and 1962. Revised from aerial photographs taken 1979  
Field checked 1980. Map edited 1982  
Hydrography compiled from information furnished by  
Wisconsin Department of Natural Resources  
Projection: Wisconsin coordinate system, central zone  
(Lambert conformal conic)  
10,000-foot grid ticks based on Wisconsin coordinate system,  
central zone and Michigan coordinate system, north zone  
1000-meter Universal Transverse Mercator grid, zone 16  
1927 North American Datum  
To place on the predicted North American Datum 1983  
move the projection lines 6 meters north and  
7 meters east as shown by dashed corner ticks  
There may be private inholdings within the boundaries of  
the National or State reservations shown on this map



CONTOUR INTERVAL 10 FEET  
NATIONAL GEODETIC VERTICAL DATUM OF 1929  
THIS MAP COMPLIES WITH NATIONAL MAP ACCURACY STANDARDS  
FOR SALE BY U.S. GEOLOGICAL SURVEY, RESTON, VIRGINIA 22092  
AND WISCONSIN GEOLOGICAL AND NATURAL HISTORY SURVEY, MADISON, WISCONSIN 53706  
AND BY THE GEOLOGICAL SURVEY DIVISION  
MICHIGAN DEPARTMENT OF NATURAL RESOURCES, LANSING, MICHIGAN 48909  
A FOLDER DESCRIBING TOPOGRAPHIC MAPS AND SYMBOLS IS AVAILABLE ON REQUEST



ROAD CLASSIFICATION  
Primary highway, hard surface  
Secondary highway, hard surface  
Unimproved road  
Interstate Route  
U. S. Route  
State Route  
Light-duty road, hard or improved surface

WAUSAUKEE NORTH, WIS.  
NW/4 WAUSAUKEE 15' QUADRANGLE  
N4522.5-W8752.5/7.5

1982

DMA 3474 IV NW-SERIES V681

RETURN TO:  
USGS AND HISTORICAL MAP ARCHIVES

SEP 20 1982