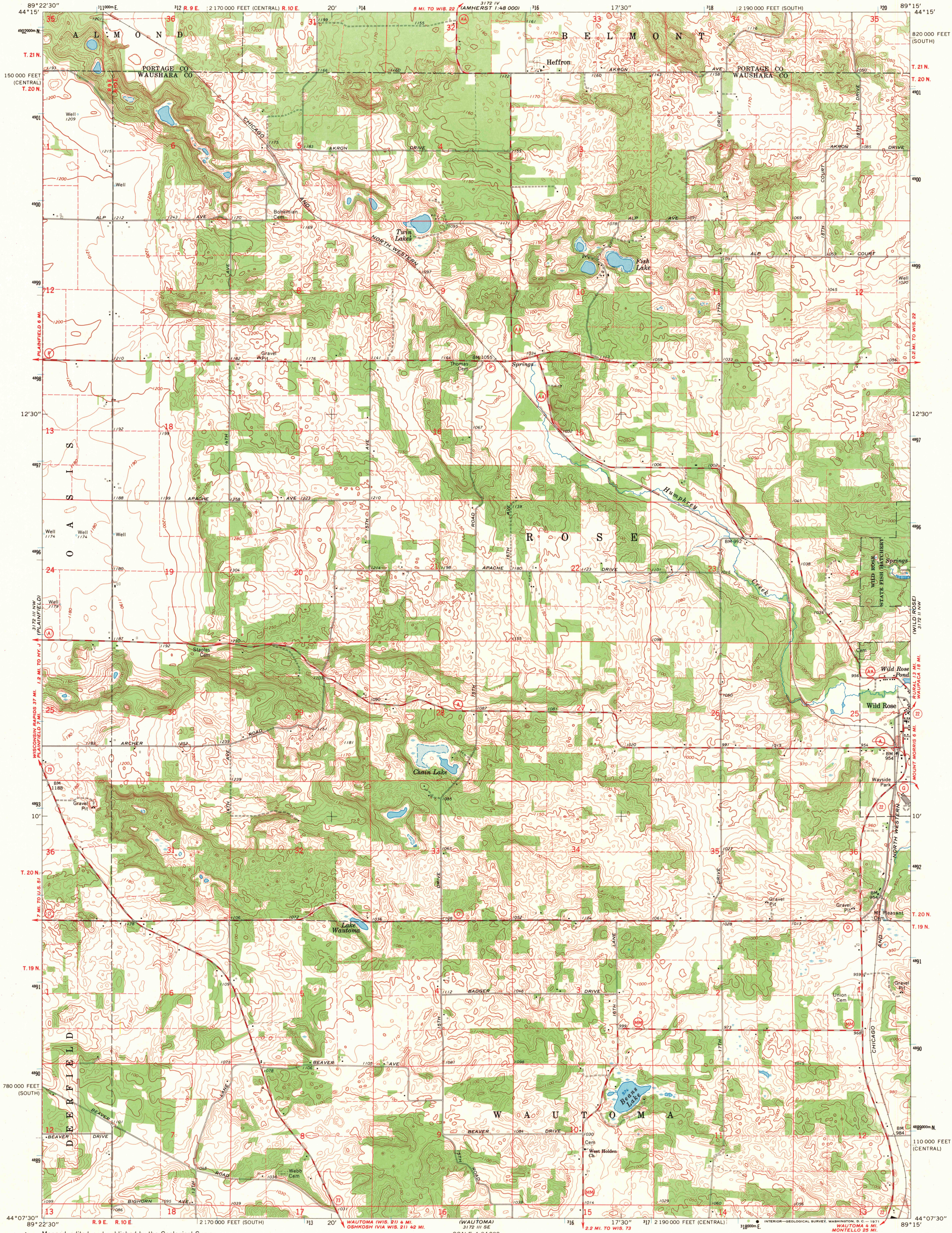


UNITED STATES
DEPARTMENT OF THE INTERIOR
GEOLOGICAL SURVEY

WAUTOMA NE QUADRANGLE
WISCONSIN
7.5 MINUTE SERIES (TOPOGRAPHIC)
NE/4 WAUTOMA 15' QUADRANGLE



Mapped, edited, and published by the Geological Survey

Control by USGS and USCGS

Topography by photogrammetric methods from aerial

photographs taken 1964. Field checked 1968

Polyconic projection. 1927 North American datum

10,000-foot grids based on Wisconsin coordinate system,

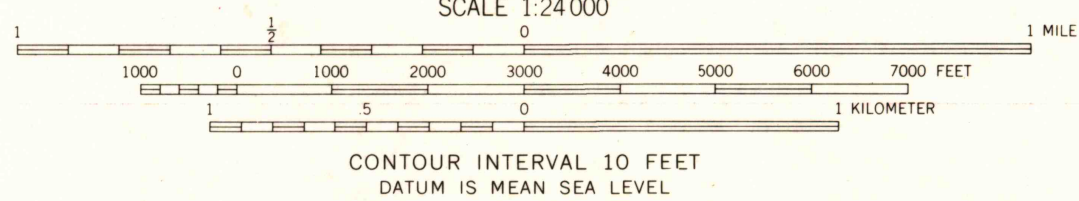
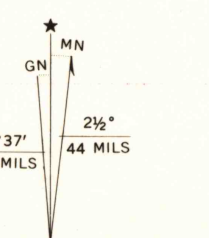
south and central zones

1000-meter Universal Transverse Mercator grid ticks,

zone 16, shown in blue

Fine red dashed lines indicate selected fence and field lines where

generally visible on aerial photographs. This information is unchecked



THIS MAP COMPLIES WITH NATIONAL MAP ACCURACY STANDARDS
FOR SALE BY U. S. GEOLOGICAL SURVEY, WASHINGTON, D. C. 20242
AND BY THE WISCONSIN GEOLOGICAL AND NATURAL HISTORY SURVEY, MADISON, WISCONSIN 53706
A FOLDER DESCRIBING TOPOGRAPHIC MAPS AND SYMBOLS IS AVAILABLE ON REQUEST

ROAD CLASSIFICATION

Secondary highway, all weather, Light-duty road, all weather,

hard surface

Unimproved road, fair or dry

weather

State Route



QUADRANGLE LOCATION

FILE COPY
TOPOGRAPHIC DIVISION

WAUTOMA NE, WIS.
NE/4 WAUTOMA 15' QUADRANGLE
N4407.5-W8915/7.5

1968

AMS 3172 III NE-SERIES V861

2455

FEB 23 1971