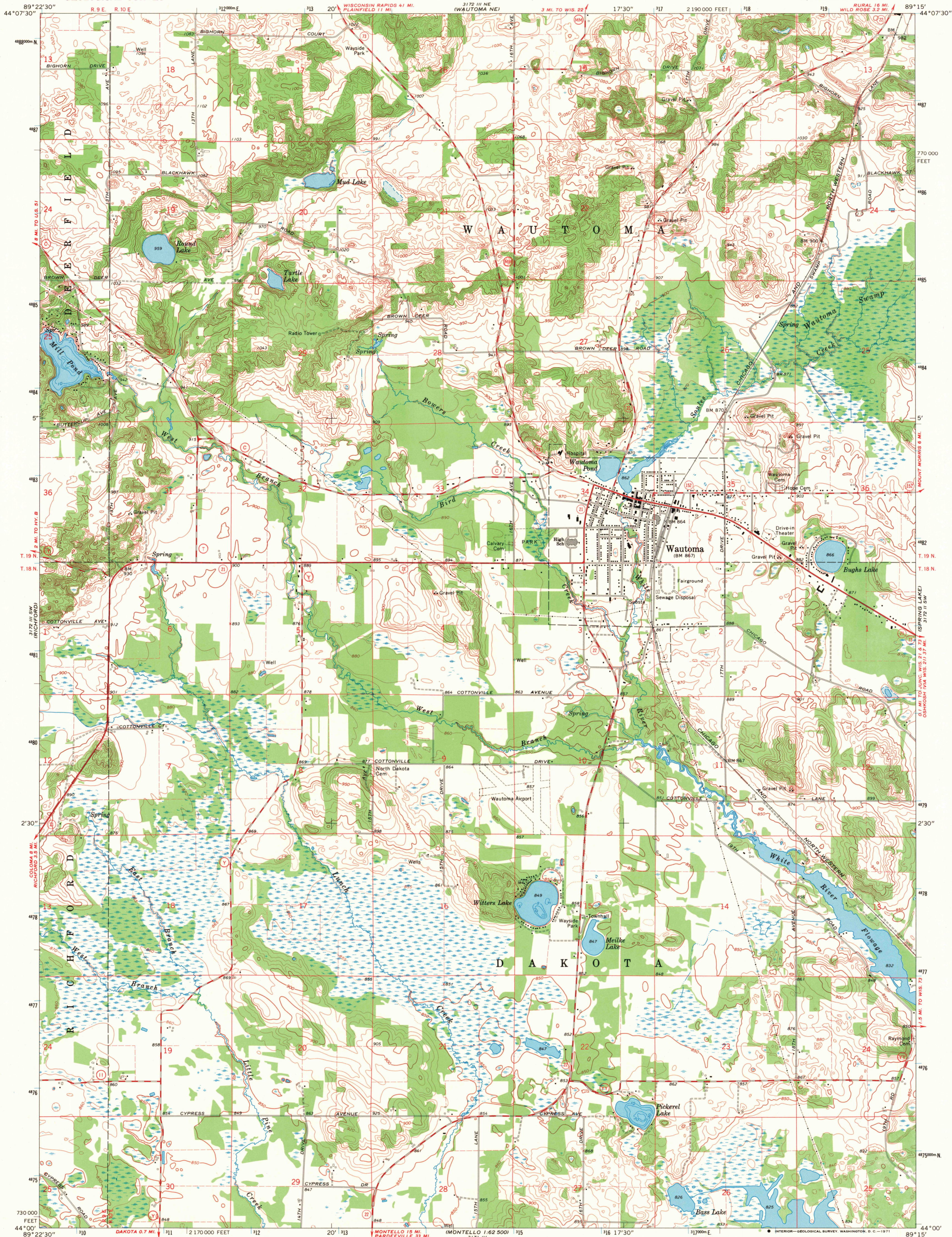
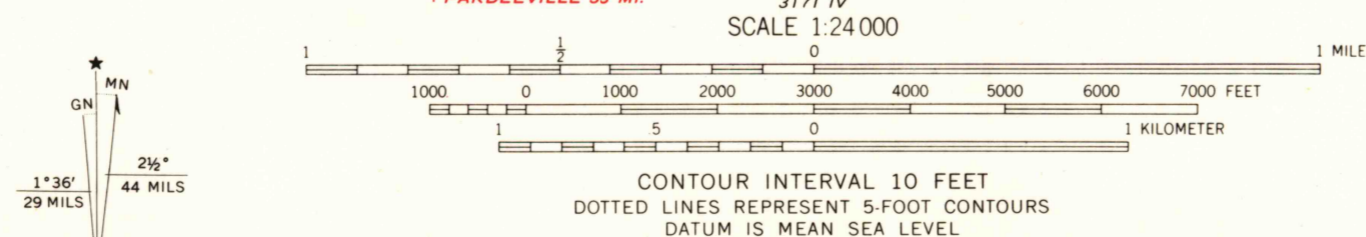


UNITED STATES  
DEPARTMENT OF THE INTERIOR  
GEOLOGICAL SURVEY

WAUTOMA QUADRANGLE  
WISCONSIN—WAUSHARA CO.  
7.5 MINUTE SERIES (TOPOGRAPHIC)  
SE/4 WAUTOMA 15' QUADRANGLE



Mapped, edited, and published by the Geological Survey  
Control by USGS and USC&GS  
Topography by photogrammetric methods from aerial  
photographs taken 1964. Field checked 1968  
Depth curves compiled from charts furnished  
by Wisconsin Department of Conservation  
Polyconic projection. 1927 North American datum  
10,000-foot grid based on Wisconsin coordinate system, south zone  
1000-meter Universal Transverse Mercator grid ticks,  
zone 16, shown in blue  
Fine red dashed lines indicate selected fence and field lines where  
generally visible on aerial photographs. This information is unchecked



THIS MAP COMPLIES WITH NATIONAL MAP ACCURACY STANDARDS  
FOR SALE BY U. S. GEOLOGICAL SURVEY, WASHINGTON, D. C. 20242  
AND BY THE WISCONSIN GEOLOGICAL AND NATURAL HISTORY SURVEY, MADISON, WISCONSIN 53706  
A FOLDER DESCRIBING TOPOGRAPHIC MAPS AND SYMBOLS IS AVAILABLE ON REQUEST

ROAD CLASSIFICATION  
Primary highway, all weather, Light-duty road, all weather,  
hard surface Improved surface  
Secondary highway, all weather, Unimproved road, fair or dry  
hard surface weather  
State Route



WAUTOMA, WIS.  
SE/4 WAUTOMA 15' QUADRANGLE  
N4400—W8915/7.5  
1968  
AMS 3172 III SE—SERIES V861

3315  
FEB 23 1971