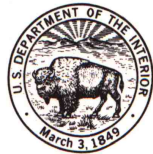


342 N.W. (REEDSVILLE)

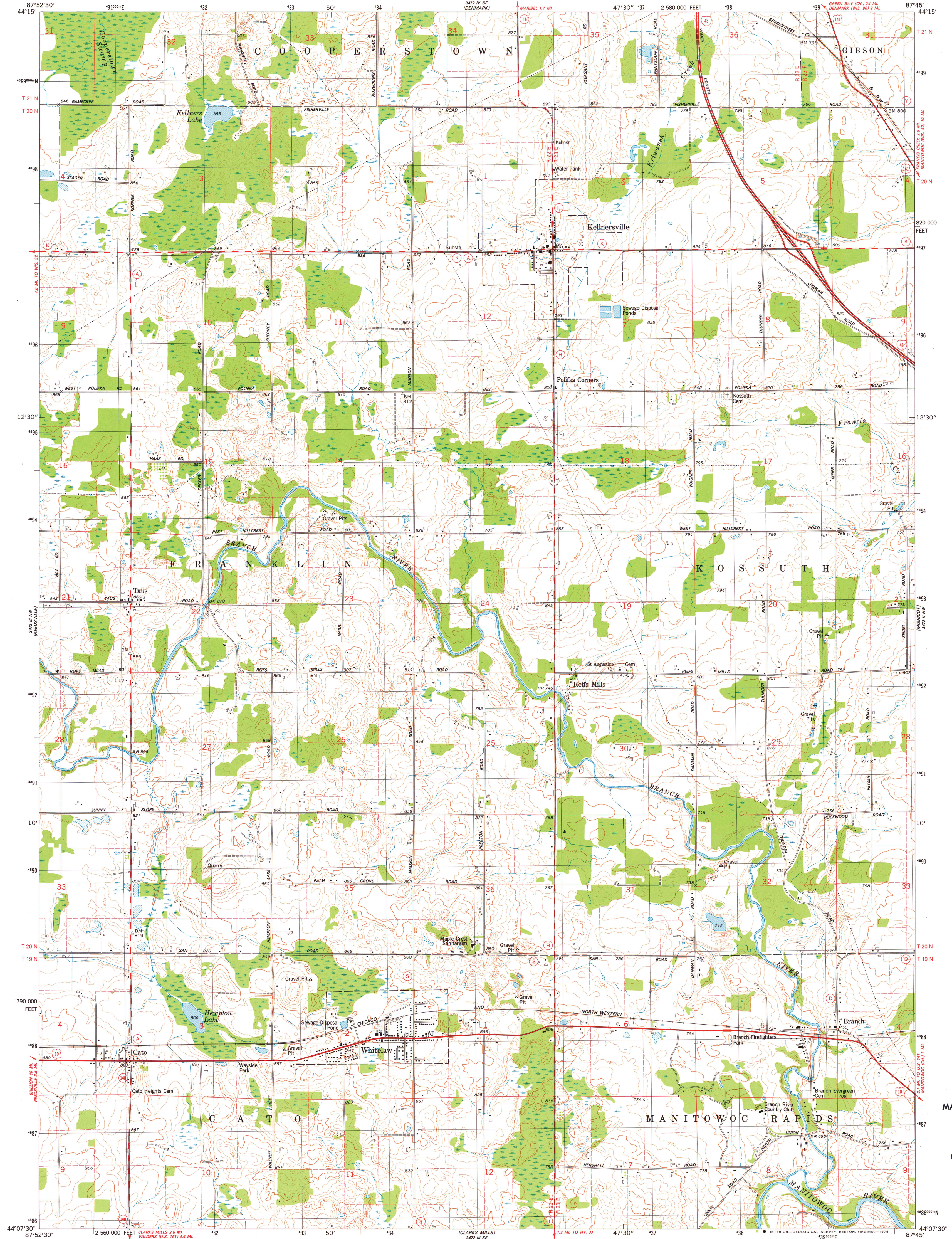
UNITED STATES
DEPARTMENT OF THE INTERIOR
GEOLOGICAL SURVEY



STATE OF WISCONSIN
DIVISION OF HIGHWAYS
GEOLOGICAL AND NATURAL HISTORY SURVEY

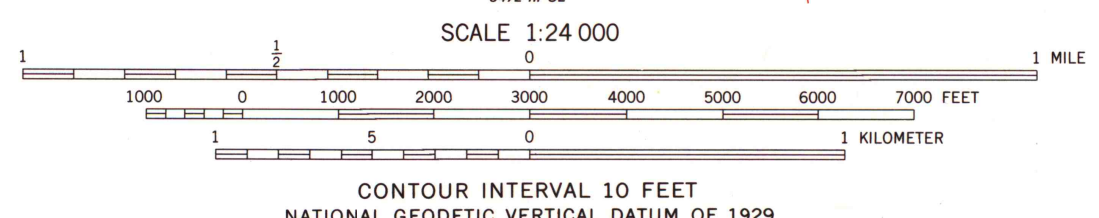
WHITELAW QUADRANGLE
WISCONSIN-MANITOWOC CO.
7.5 MINUTE SERIES (TOPOGRAPHIC)
NE 1/4 REEDSVILLE 15' QUADRANGLE

342 E.W. (LAWRENCE)



Maped, edited, and published by the Geological Survey
in cooperation with the Wisconsin Division of Highways
and Wisconsin Geological and Natural History Survey
Control by USGS and NOS/NOAA
Topography by photogrammetric methods from aerial photographs
taken 1976. Field checked 1976. Map edited 1978
Projection and 10,000-foot grid ticks: Wisconsin coordinate
system, south zone (Lambert conformal conic)
1000-meter Universal Transverse Mercator grid, zone 16
1927 North American datum
Fine red dashed lines indicate selected fence and field lines where
generally visible on aerial photographs. This information is unchecked

UTM GRID AND 1978 MAGNETIC NORTH
DECLINATION AT CENTER OF SHEET



THIS MAP COMPLIES WITH NATIONAL MAP ACCURACY STANDARDS
FOR SALE BY U.S. GEOLOGICAL SURVEY, RESTON, VIRGINIA 22092
AND WISCONSIN GEOLOGICAL AND NATURAL HISTORY SURVEY, MADISON, WISCONSIN 53706
A FOLDER DESCRIBING TOPOGRAPHIC MAPS AND SYMBOLS IS AVAILABLE ON REQUEST



ROAD CLASSIFICATION
Primary highway, hard surface
Secondary highway, hard surface
Unimproved road
Interstate Route
U.S. Route
State Route

WHITELAW, WIS.
NE 1/4 REEDSVILLE 15' QUADRANGLE
N4407.5-W8745.7.5

1978
AMS 3472 III NE-SERIES V801

MAP AND AIR PHOTO
LIBRARY
SEP 6 1979
University of Wisconsin
Madison

1978
Copy
1-1