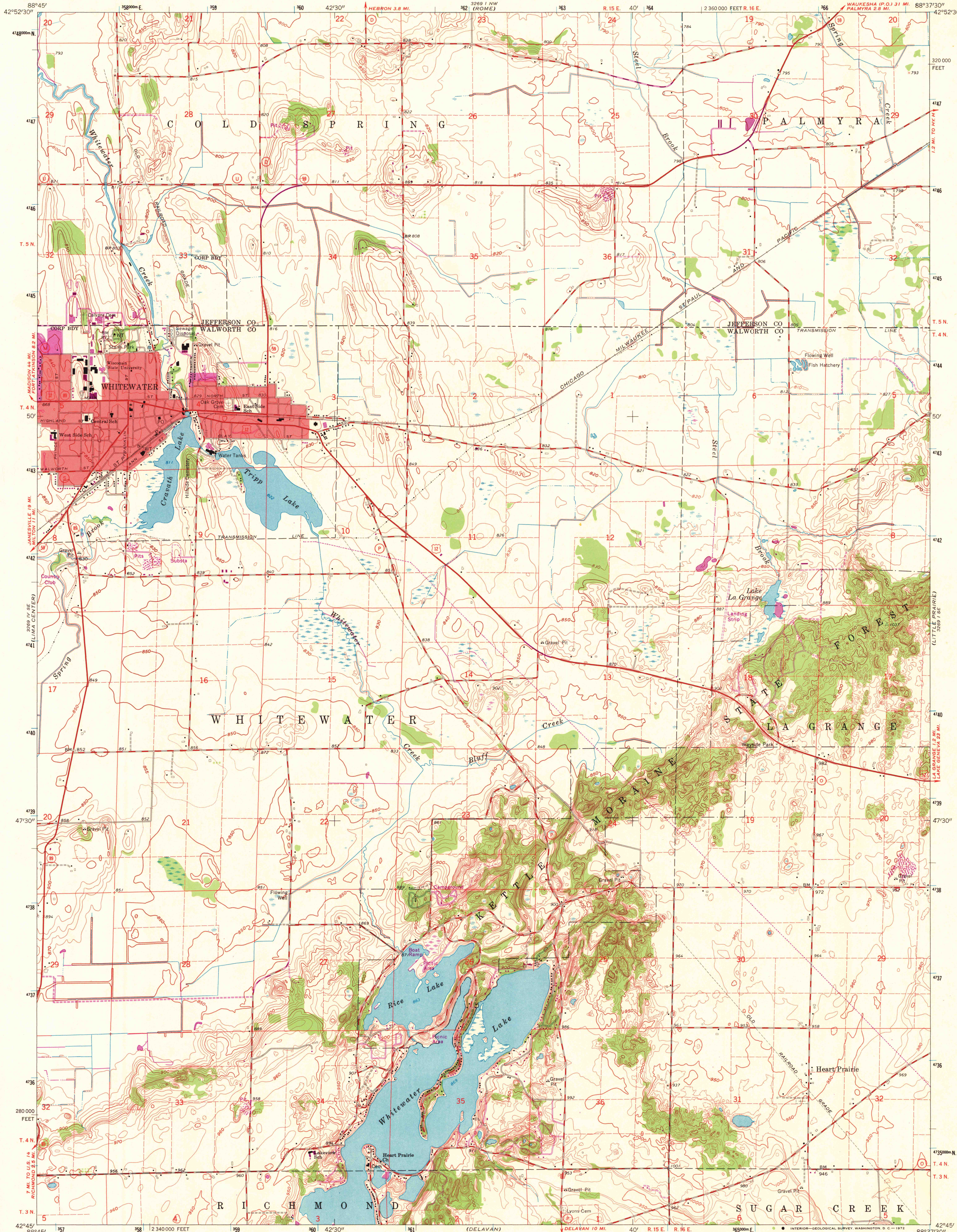
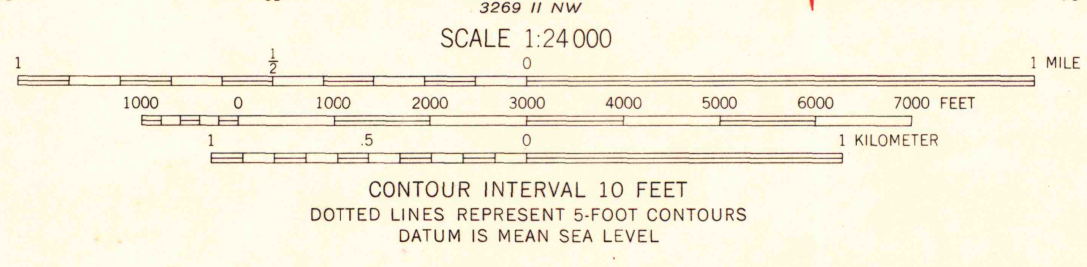
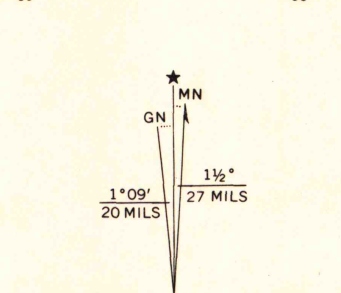


UNITED STATES
DEPARTMENT OF THE INTERIOR
GEOLOGICAL SURVEY

WHITEWATER QUADRANGLE
WISCONSIN
7.5 MINUTE SERIES (TOPOGRAPHIC)
SW 1/4 WHITEWATER 15' QUADRANGLE



Maped, edited, and published by the Geological Survey
Control by USGS and USC&GS
Topography by photogrammetric methods from aerial
photographs taken 1955. Field checked 1960
Polyconic projection. 1927 North American datum
10,000-foot grid based on Wisconsin coordinate system, south zone
1000-meter Universal Transverse Mercator grid ticks,
zone 16, shown in blue
Red tint indicates areas in which only landmark buildings are shown
Fine red dashed lines indicate selected fence and field lines where
generally visible on aerial photographs. This information is unchecked
Revisions shown in purple compiled from aerial photographs
taken 1971. This information not field checked
Purple tint indicates extension of urban areas



ROAD CLASSIFICATION

Heavy-duty	Light-duty
Medium-duty	Unimproved dirt

U. S. Route State Route

WISCONSIN

QUADRANGLE LOCATION

1971 Copy 1-1

WHITEWATER, WIS.
SW 1/4 WHITEWATER 15' QUADRANGLE
N4245-W8837.5/7.5

1960
PHOTOREVISED 1971
AMS 3269 1 SW-SERIES V861

MAP AND AIR PHOTO
LIBRARY

AUG 17 1972

University of Wisconsin