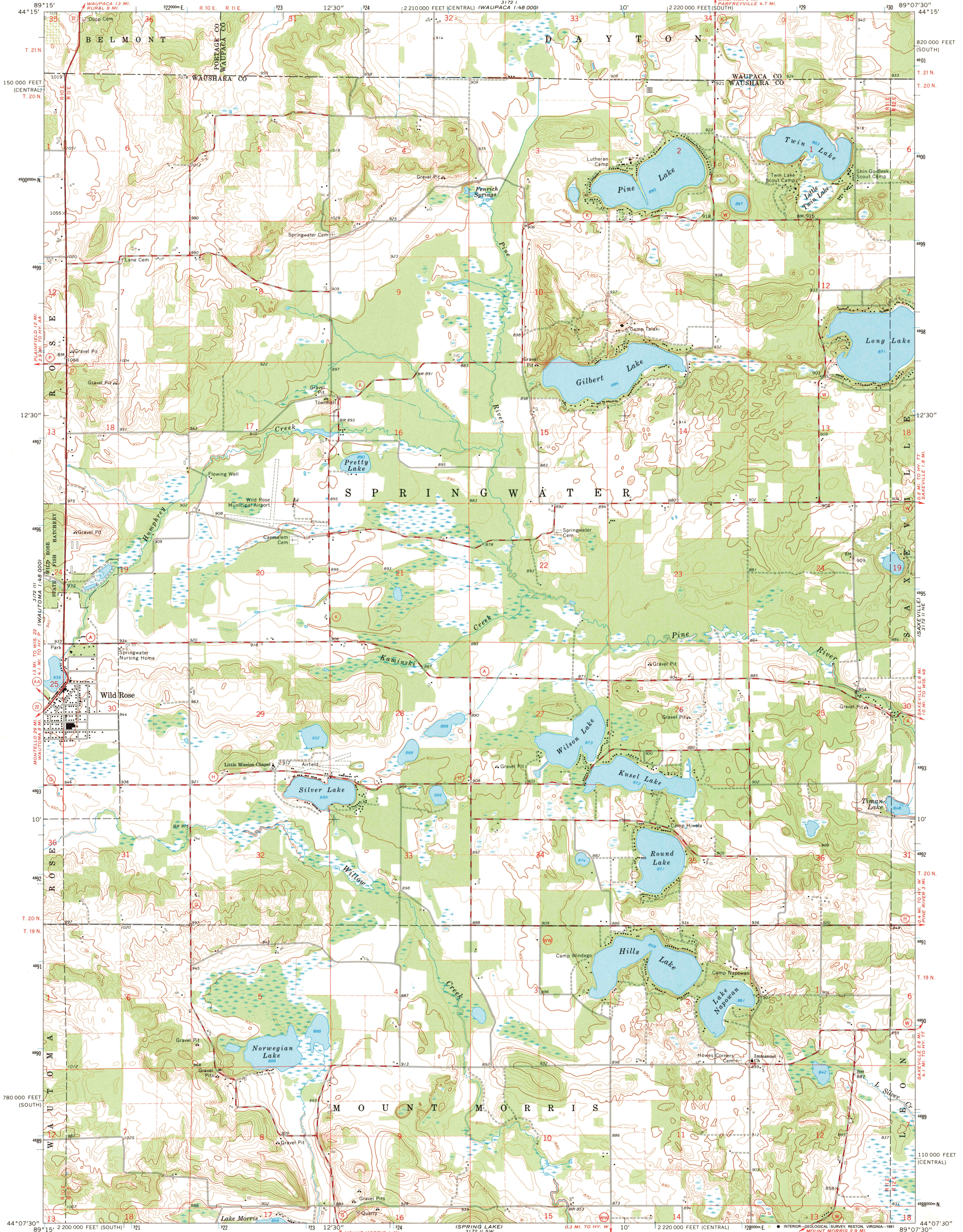


UNITED STATES  
DEPARTMENT OF THE INTERIOR  
GEOLOGICAL SURVEY

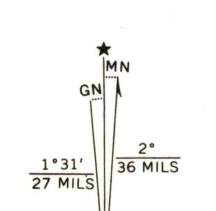
WILD ROSE QUADRANGLE  
WISCONSIN  
7.5 MINUTE SERIES (TOPOGRAPHIC)  
NW 1/4 REDGRANITE 15' QUADRANGLE



Mapped, edited, and published by the Geological Survey in cooperation with the Wisconsin Highway Commission and Wisconsin Geological and Natural History Survey  
Control by USGS and USC&GS

Topography by photogrammetric methods from aerial photographs taken 1960. Field checked 1961  
Polyconic projection. 1927 North American datum  
10,000-foot grids based on Wisconsin coordinate system, south and central zones  
1000-meter Universal Transverse Mercator grid ticks, zone 16, shown in blue

Fine red dashed lines indicate selected fence and field lines where generally visible on aerial photographs. This information is unchecked  
Map photospcted 1983  
No major culture or drainage changes observed



SCALE 1:24,000

CONTOUR INTERVAL 10 FEET  
DATUM IS MEAN SEA LEVEL

THIS MAP COMPLIES WITH NATIONAL MAP ACCURACY STANDARDS  
FOR SALE BY U.S. GEOLOGICAL SURVEY, DENVER, COLORADO 80225 OR RESTON, VIRGINIA 22092  
AND WISCONSIN GEOLOGICAL AND NATURAL HISTORY SURVEY, MADISON, WISCONSIN 53706  
A FOLDER DESCRIBING TOPOGRAPHIC MAPS AND SYMBOLS IS AVAILABLE ON REQUEST

ROAD CLASSIFICATION  
Heavy-duty ——— Light-duty ———  
Medium-duty ——— Unimproved dirt ———  
State Route ○



WILD ROSE, WIS.  
NW 1/4 REDGRANITE 15' QUADRANGLE  
N4407.5—W8907.5/7.5  
1961  
PHOTOINSPECTED 1983  
AMS 3172 11 NW—SERIES V861

