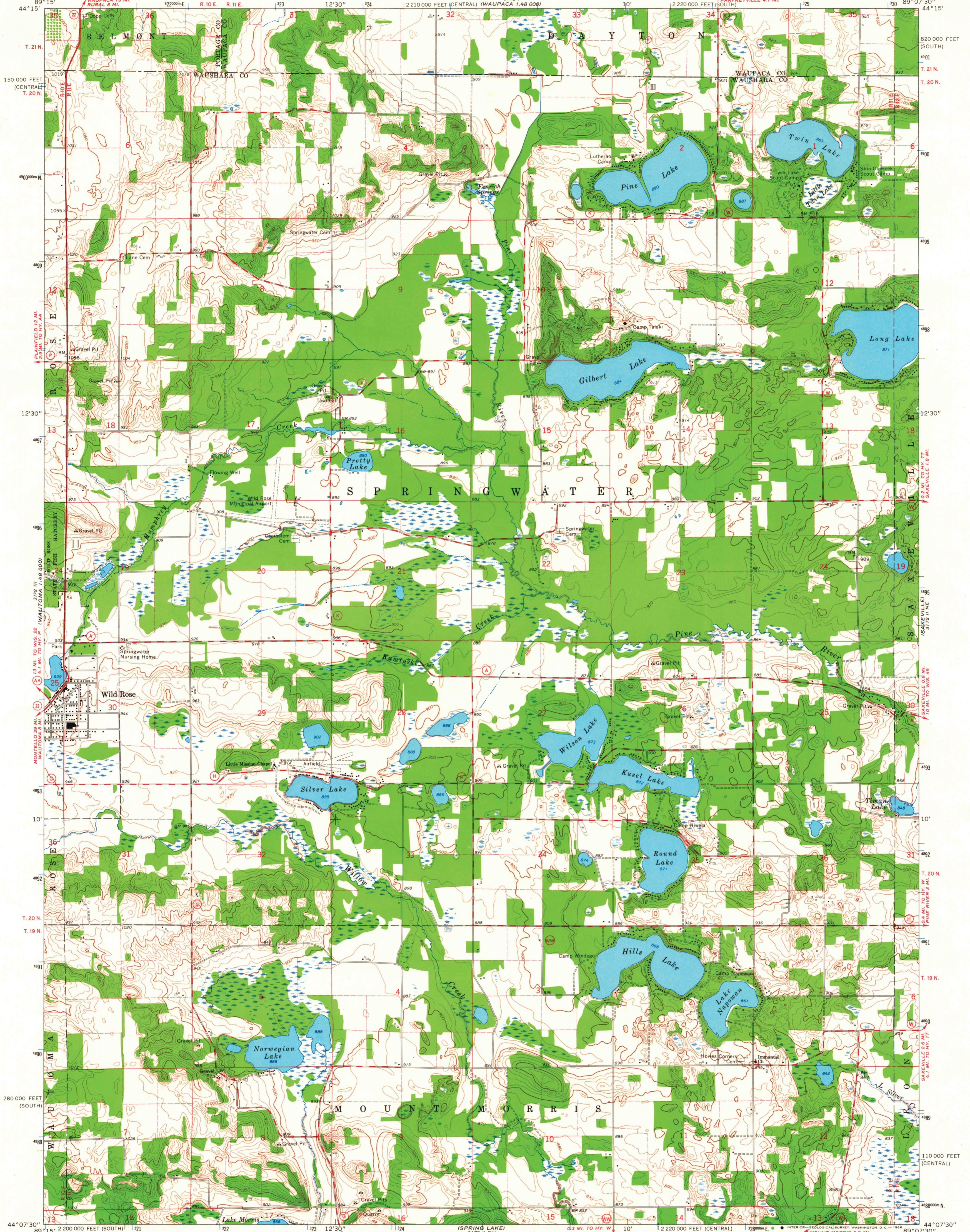
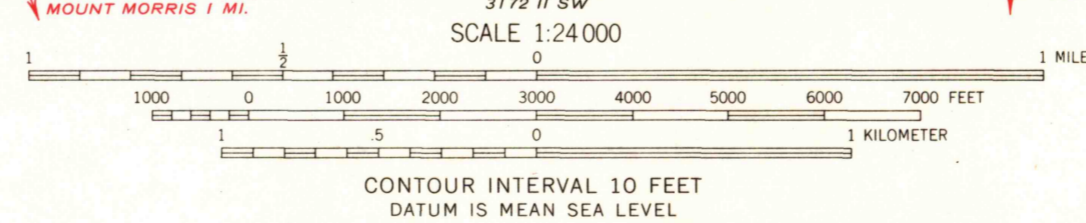


UNITED STATES
DEPARTMENT OF THE INTERIOR
GEOLOGICAL SURVEY

WILD ROSE QUADRANGLE
WISCONSIN
7.5 MINUTE SERIES (TOPOGRAPHIC)
NW/4 REDGRANITE 15 QUADRANGLE



Mapped, edited, and published by the Geological Survey in cooperation with the Wisconsin Highway Commission and Wisconsin Geological and Natural History Survey. Control by USGS and USC&GS. Topography by photogrammetric methods from aerial photographs taken 1960. Field checked 1961. Polyconic projection. 1927 North American datum. 10,000-foot grids based on Wisconsin coordinate system, south and central zones. 1000-meter Universal Transverse Mercator grid ticks, zone 16, shown in blue. Fine red dashed lines indicate selected fence and field lines where generally visible on aerial photographs. This information is unchecked.



ROAD CLASSIFICATION
 Heavy-duty ——— Light-duty ———
 Medium-duty ——— Unimproved dirt ———
 State Route ○

THIS MAP COMPLIES WITH NATIONAL MAP ACCURACY STANDARDS
 FOR SALE BY U.S. GEOLOGICAL SURVEY, WASHINGTON, D. C. 20242
 AND BY THE WISCONSIN GEOLOGICAL AND NATURAL HISTORY SURVEY, MADISON, WISCONSIN
 A FOLDER DESCRIBING TOPOGRAPHIC MAPS AND SYMBOLS IS AVAILABLE ON REQUEST



WILD ROSE, WIS.
 NW/4 REDGRANITE 15 QUADRANGLE
 N4407.5-W8907.5/7.5
 1961
 AMS 3172 II NW—SERIES V861

3060
 AUG 16 1966