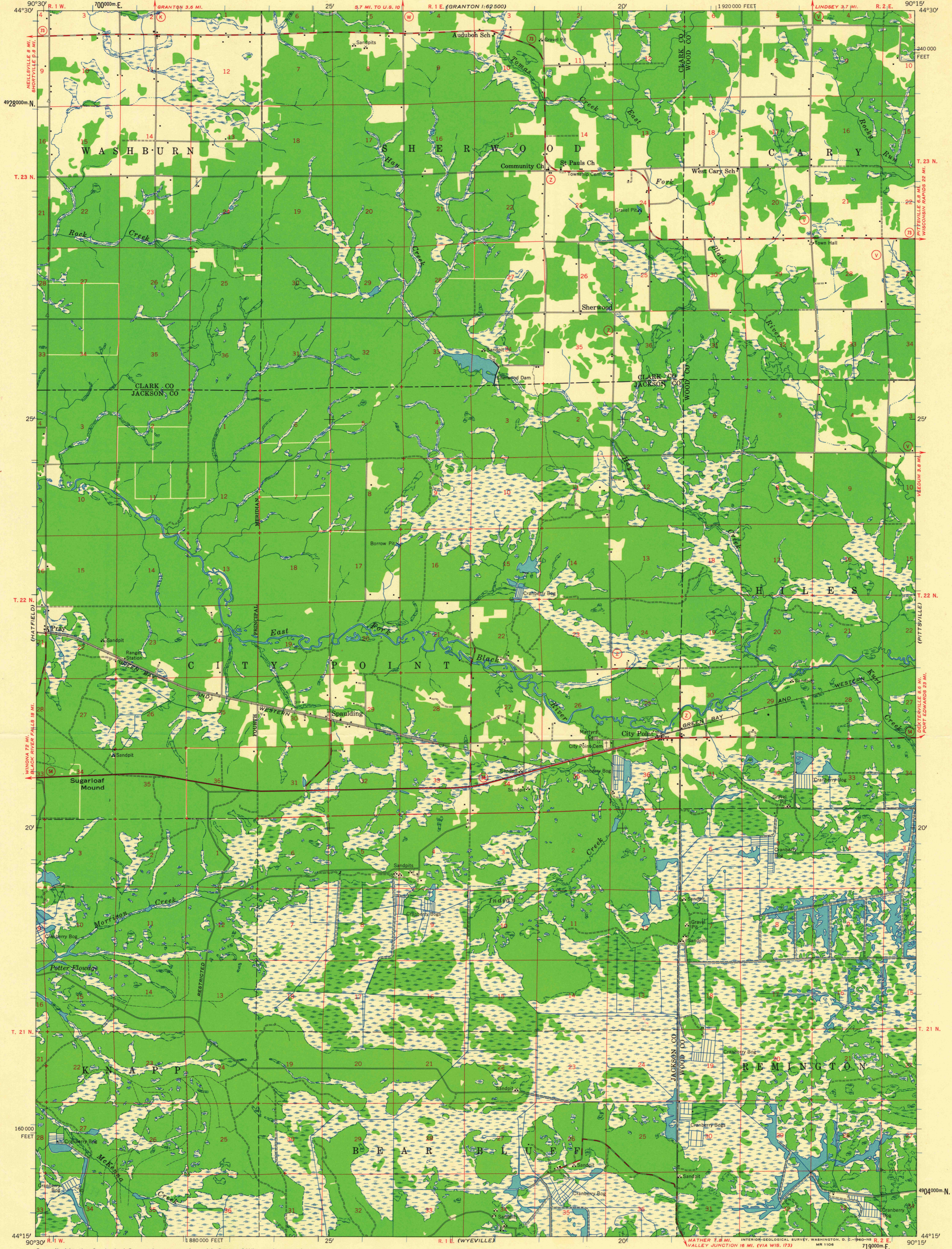
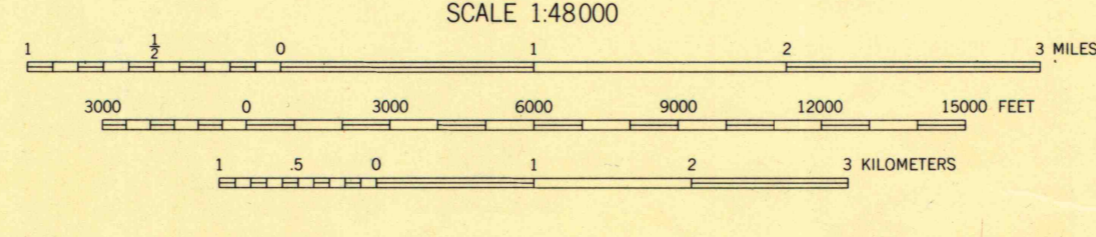


(MILLSVILLE)
1:62,500

(MARSHFIELD)
1:62,500



Compiled by the Geological Survey in cooperation with State of Wisconsin agencies from aerial photographs taken 1957
Field examination 1957
Control by USGS and USC&GS
Polyconic projection, 1927 North American Datum
10,000-foot grid based on Wisconsin coordinate system, central zone
1000-meter Universal Transverse Mercator grid ticks, zone 15, shown in blue



ROAD CLASSIFICATION
Heavy-duty ——— Light-duty - - - - -
Medium-duty ——— Unimproved dirt - - - - -
State Route ○

TRUE NORTH
MAGNETIC NORTH

APPROXIMATE MEAN DECLINATION, 1957

WISCONSIN
QUADRANGLE LOCATION

LEGEND
County line ———
Civil township line ———
Township line ———
Section line ———
Section corner: Found; Indicated + +
Trail ———
Horizontal control point ———
Vertical control point ———
Woodland ———
Swamp ———
Perennial stream ———
Intermittent stream ———

DATUM IS MEAN SEA LEVEL

THIS MAP COMPLIES WITH NATIONAL MAP ACCURACY STANDARDS
FOR SALE BY U. S. GEOLOGICAL SURVEY, WASHINGTON 25, D. C.
AND BY THE WISCONSIN GEOLOGICAL AND NATURAL HISTORY SURVEY, MADISON 6, WISCONSIN
A FOLDER DESCRIBING TOPOGRAPHIC MAPS AND SYMBOLS IS AVAILABLE ON REQUEST

CITY POINT, WIS.
N4415-W9015/15
1957

MAP AND AIR PHOTO LIBRARY
University of Wisconsin

FOR LIBRARY USE ONLY

1957
copy
1-1