

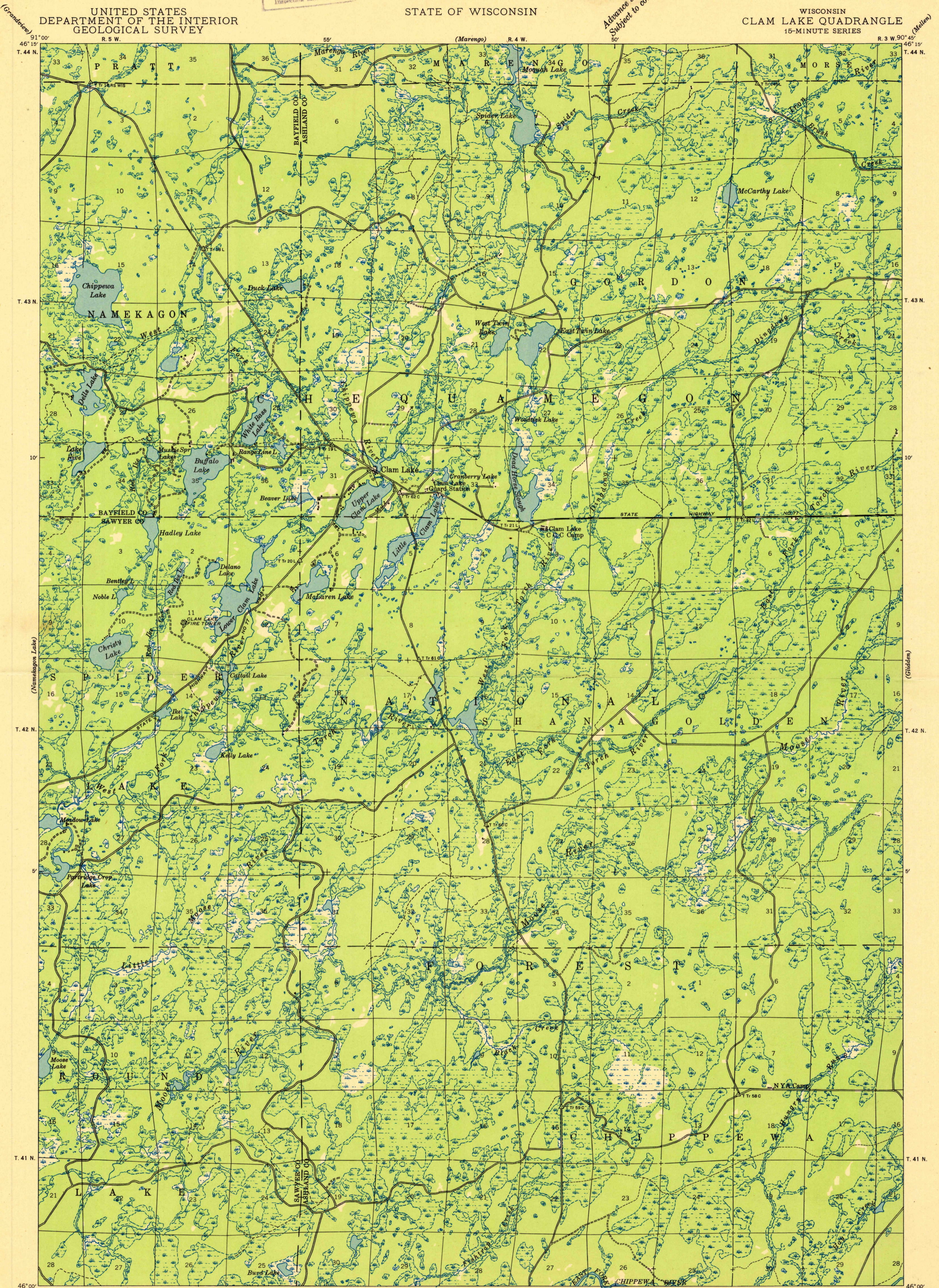
U.S.G.S.
FILE COPY
Inspection and Editing

UNITED STATES
DEPARTMENT OF THE INTERIOR
GEOLOGICAL SURVEY

STATE OF WISCONSIN

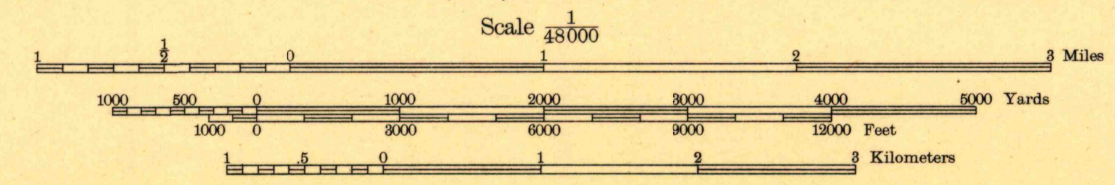
WISCONSIN
CLAM LAKE QUADRANGLE
15-MINUTE SERIES

Advance sheet
Subject to correction



Compiled by Geological Survey
from aerial photographs
Field examination in 1942

TRUE NORTH
MAGNETIC NORTH
APPROXIMATE MEAN
DECLINATION, 1942



FOR SALE BY U.S. GEOLOGICAL SURVEY, WASHINGTON 25, D. C.
A FOLDER DESCRIBING TOPOGRAPHIC MAPS AND SYMBOLS IS AVAILABLE ON REQUEST

U.S.G.S.
FILE COPY
Inspection and Editing

Polyconic projection. 1927 North American datum
+ Recovered public land corner

CLAM LAKE, WIS.
Edition of 1945
Reprinted 1950
USGS
Historical File
Topographic Division
N 4600-W9045/15

NOV 9 1950

2155