

(Three Lakes)
89° 00'
45° 45'
T. 38 N.

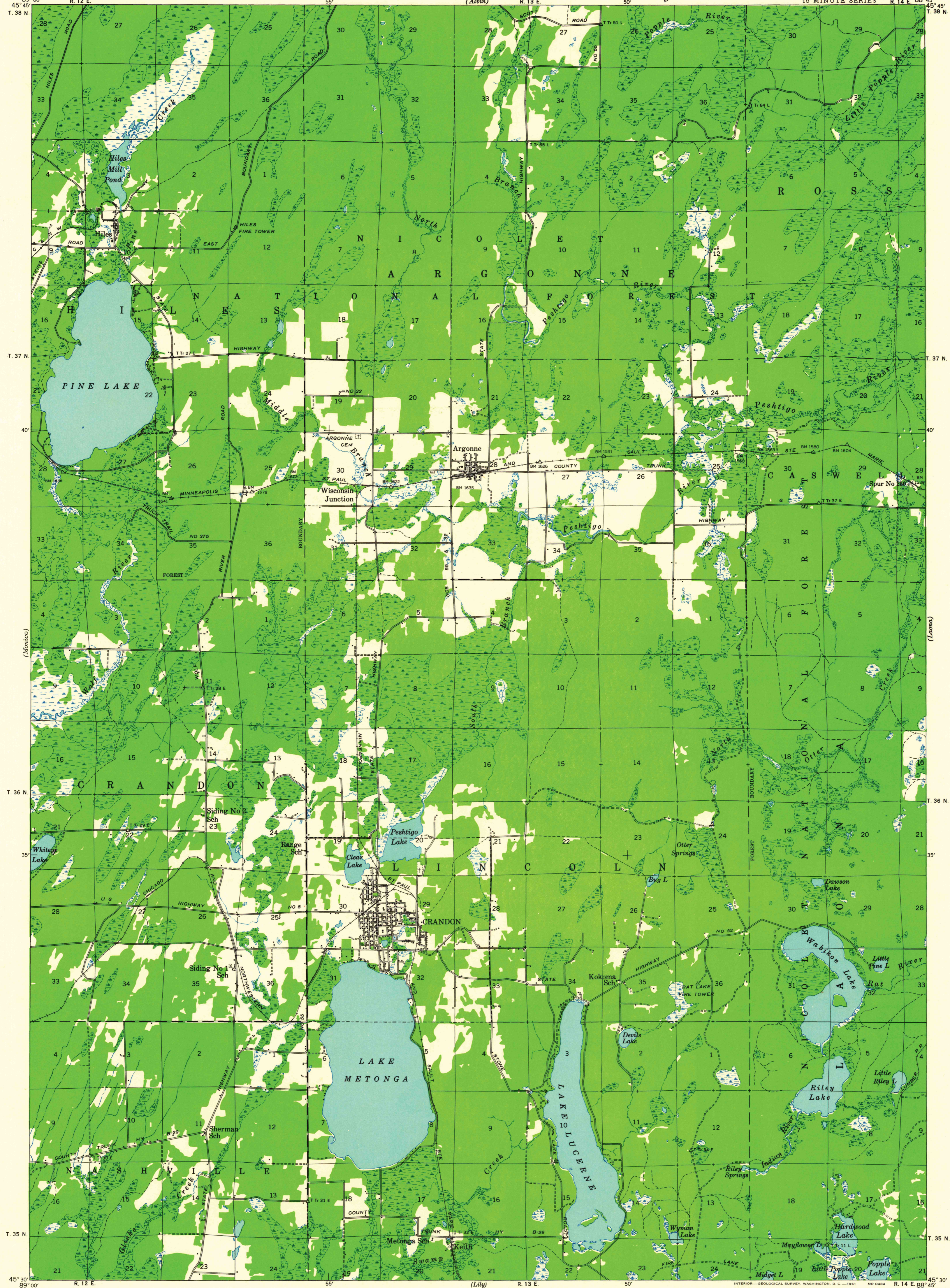
UNITED STATES
DEPARTMENT OF THE INTERIOR
GEOLOGICAL SURVEY

STATE OF WISCONSIN
STATE HIGHWAY COMMISSION

Advance sheet
Subject to correction.

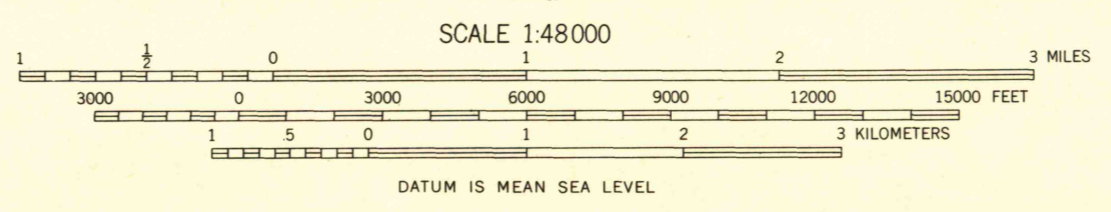
WISCONSIN
(FOREST COUNTY)
CRANDON QUADRANGLE
15 MINUTE SERIES R. 14 E. 88° 45'
T. 38 N.

(Long Lake)



(Etche) Compiled by Geological Survey
from aerial photographs
Field examination in 1938-39

TRUE NORTH
MAGNETIC NORTH
APPROXIMATE MEAN
DECLINATION, 1939



INTERIOR GEOLOGICAL SURVEY, WASHINGTON, D. C. 1961
POLYCONIC PROJECTION, 1927 NORTH AMERICAN DATUM

U.S.G.S.
FILE COPY
TOPOGRAPHIC DIVISION

CRANDON, WIS.

N 4530-8845/15
1939

FOR SALE BY U. S. GEOLOGICAL SURVEY, WASHINGTON 25, D. C.
AND BY THE WISCONSIN GEOLOGICAL AND NATURAL HISTORY SURVEY, MADISON 6, WISCONSIN
A FOLDER DESCRIBING TOPOGRAPHIC MAPS AND SYMBOLS IS AVAILABLE ON REQUEST

USGS
Historical File
Topographic Division

DEC 13 1961

3060