

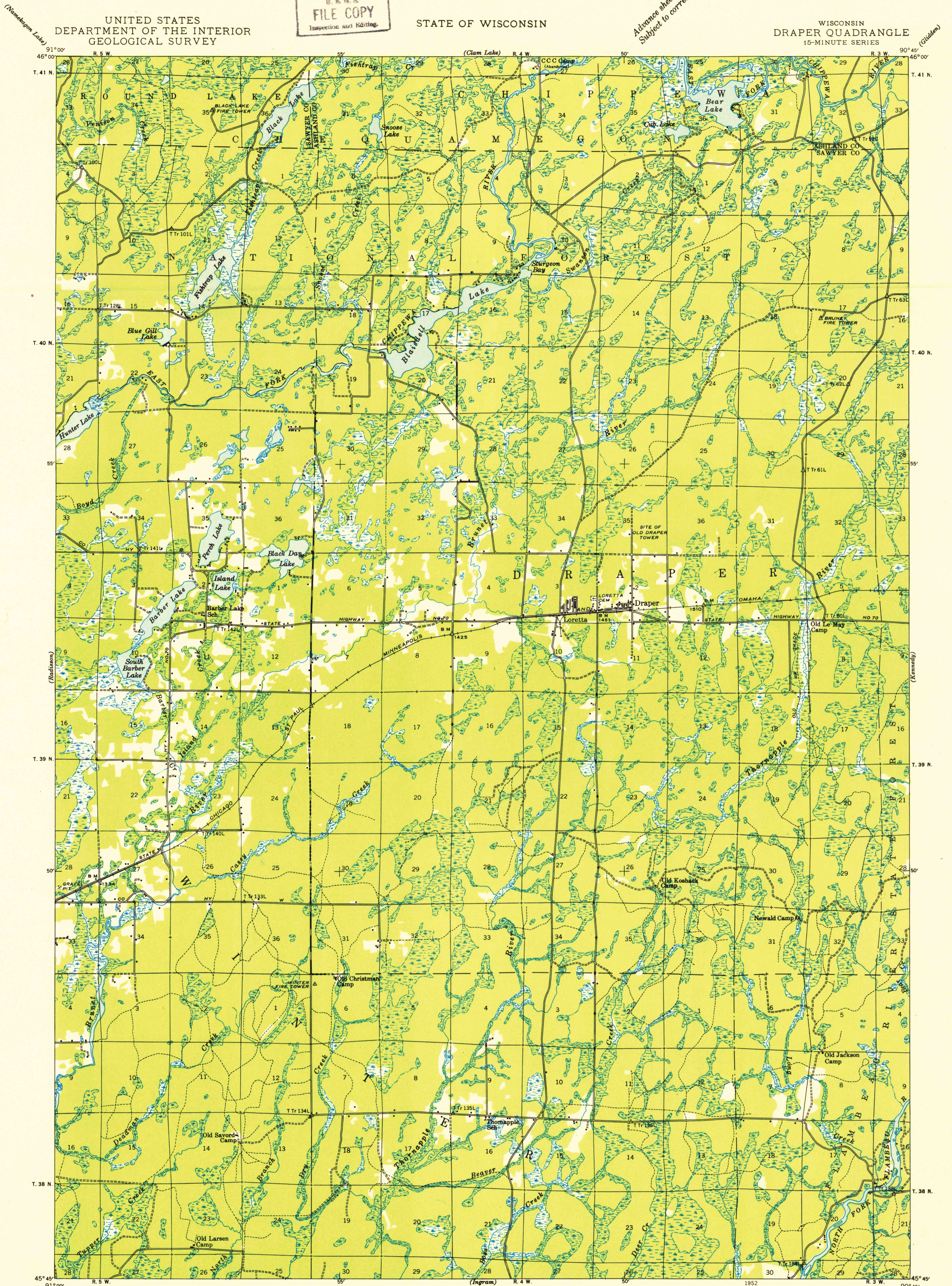
U.S.G.S.
FILE COPY
Inspection and Editing

UNITED STATES
DEPARTMENT OF THE INTERIOR
GEOLOGICAL SURVEY

STATE OF WISCONSIN

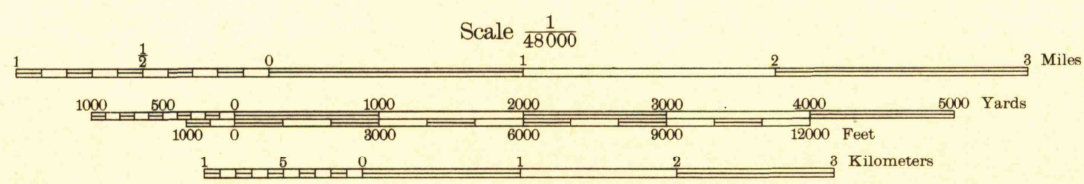
WISCONSIN
DRAPER QUADRANGLE
15-MINUTE SERIES

Advance sheet
Subject to correction



Compiled by Geological Survey
from aerial photographs
Field examination in 1944

31° 12'
TRUE NORTH
MAGNETIC NORTH
APPROXIMATE MEAN
DECLINATION, 1944



Datum is mean sea level

FOR SALE BY U. S. GEOLOGICAL SURVEY, WASHINGTON 25, D. C.
A FOLDER DESCRIBING TOPOGRAPHIC MAPS AND SYMBOLS IS AVAILABLE ON REQUEST

Polyconic projection. 1927 North American datum
+ Recovered public land corner

U.S.G.S.
FILE COPY
Inspection and Editing

DRAPER, WIS.
1944
N 4545-W 9045/15

MAR 3 1952 2150