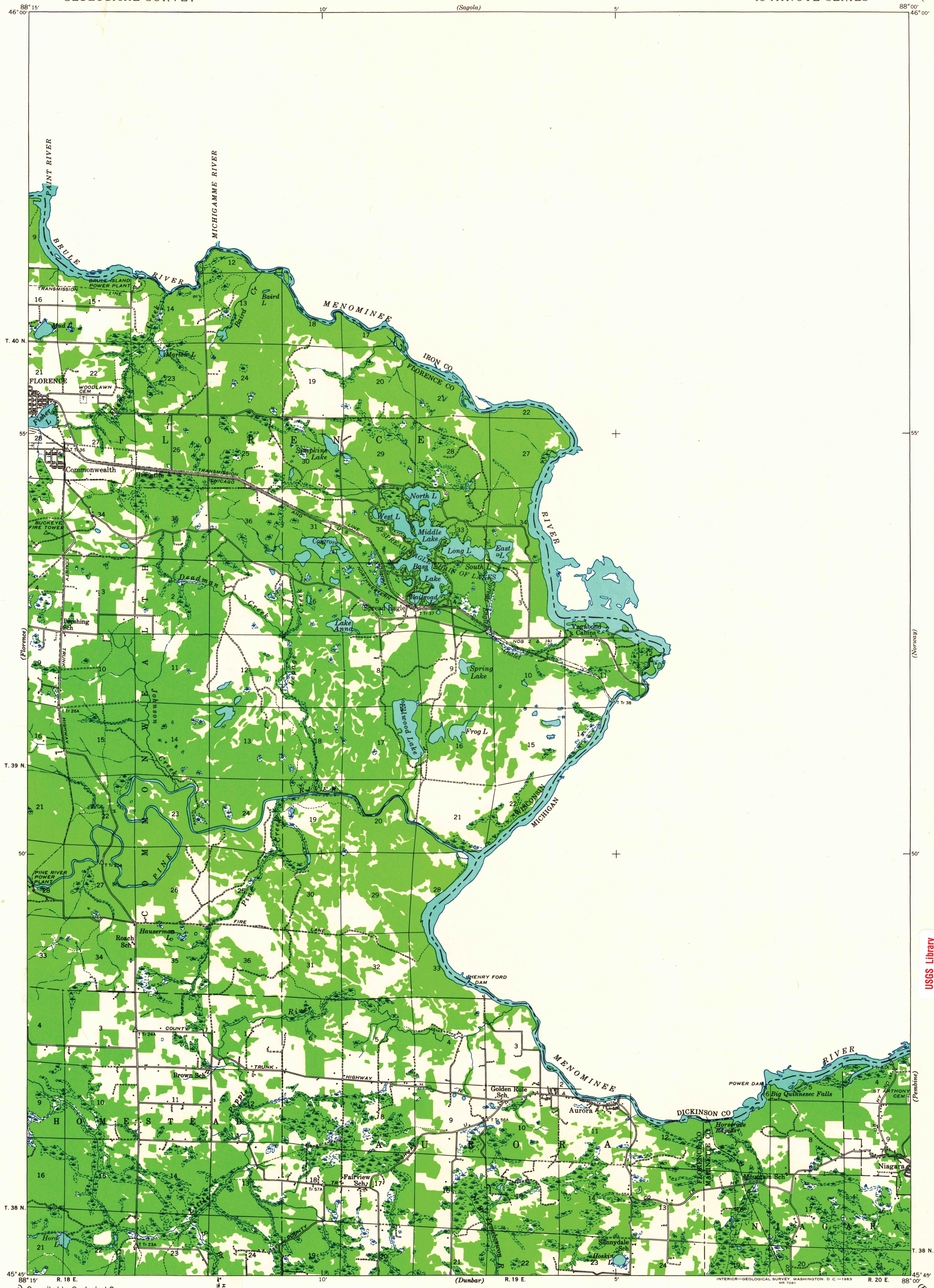


(Capital Falls)
1:25,000

UNITED STATES
DEPARTMENT OF THE INTERIOR
GEOLOGICAL SURVEY

STATE OF WISCONSIN
STATE HIGHWAY COMMISSION

WISCONSIN-MICHIGAN
IRON MOUNTAIN QUADRANGLE
15-MINUTE SERIES



Compiled by Geological Survey
from aerial photographs
Field examination in 1939

TRUE NORTH
MAGNETIC NORTH
APPROXIMATE MEAN
DECLINATION, 1939

SCALE 1:48,000
1 2 3 MILES
3000 0 3000 6000 9000 12000 15000 FEET
3 0 3 KILOMETERS

FOR SALE BY U. S. GEOLOGICAL SURVEY, WASHINGTON 25, D. C.
AND BY THE WISCONSIN GEOLOGICAL AND NATURAL HISTORY SURVEY, MADISON 6, WISCONSIN
A FOLDER DESCRIBING TOPOGRAPHIC MAPS AND SYMBOLS IS AVAILABLE ON REQUEST

USGS LIBRARY - RESTON
3 1818 00459988 0

IRON MOUNTAIN, WIS.-MICH.
N 4545-W8800/15
1939

FILE COPY
TOPOGRAPHIC DIVISION

1190
AUG - 6 1963

USGS Library
Reston, VA.
Topo Archive