

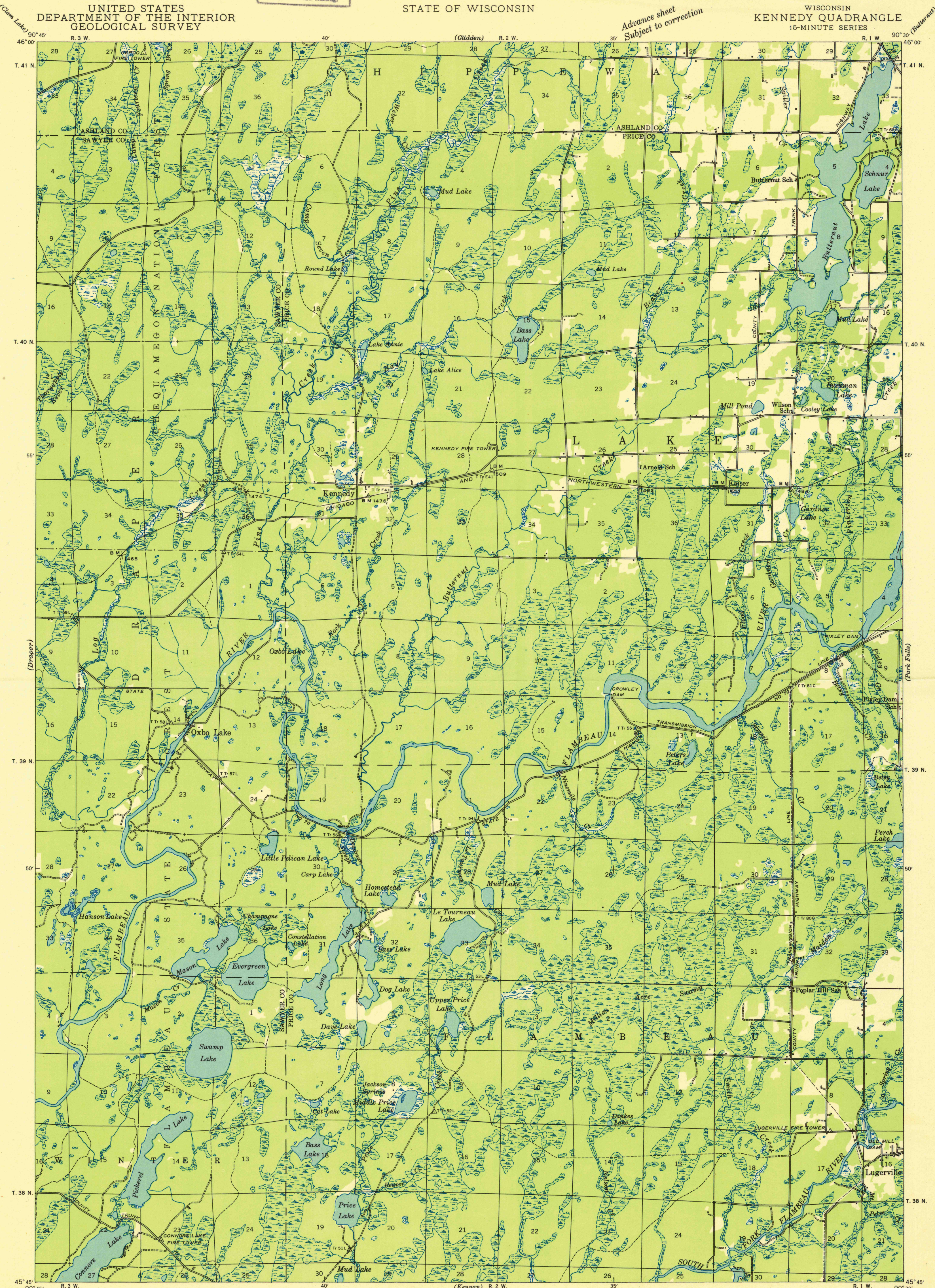
U.S.G.S.
FILE COPY
Inspection and Editing.

UNITED STATES
DEPARTMENT OF THE INTERIOR
GEOLOGICAL SURVEY

STATE OF WISCONSIN

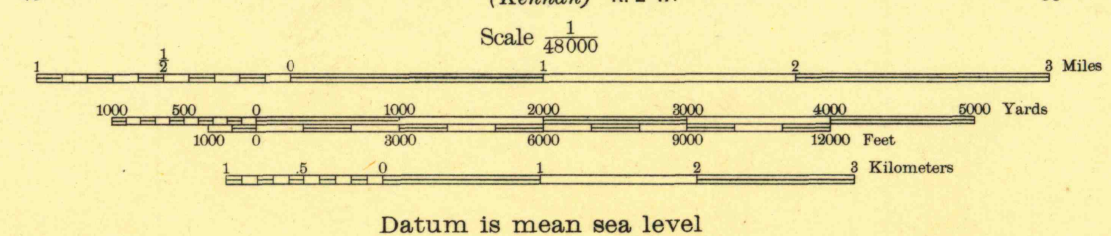
WISCONSIN
KENNEDY QUADRANGLE
15-MINUTE SERIES

Advance sheet
Subject to correction



Compiled by Geological Survey
from aerial photographs
Field examination in 1941

TRUE NORTH
MAGNETIC NORTH
APPROXIMATE MEAN
DECLINATION, 1941



Polyconic projection. 1927 North American datum
+ Recovered public land corner

FOR SALE BY U. S. GEOLOGICAL SURVEY, WASHINGTON 25, D. C.
A FOLDER DESCRIBING TOPOGRAPHIC MAPS AND SYMBOLS IS AVAILABLE ON REQUEST

U.S.G.S.
FILE COPY
Inspection and Editing.

KENNEDY, WIS.
Edition of 1945
Reprinted 1950
N4545-W9030/15

USGS
Historical File
Topographic Division

NOV 9 1950

2140