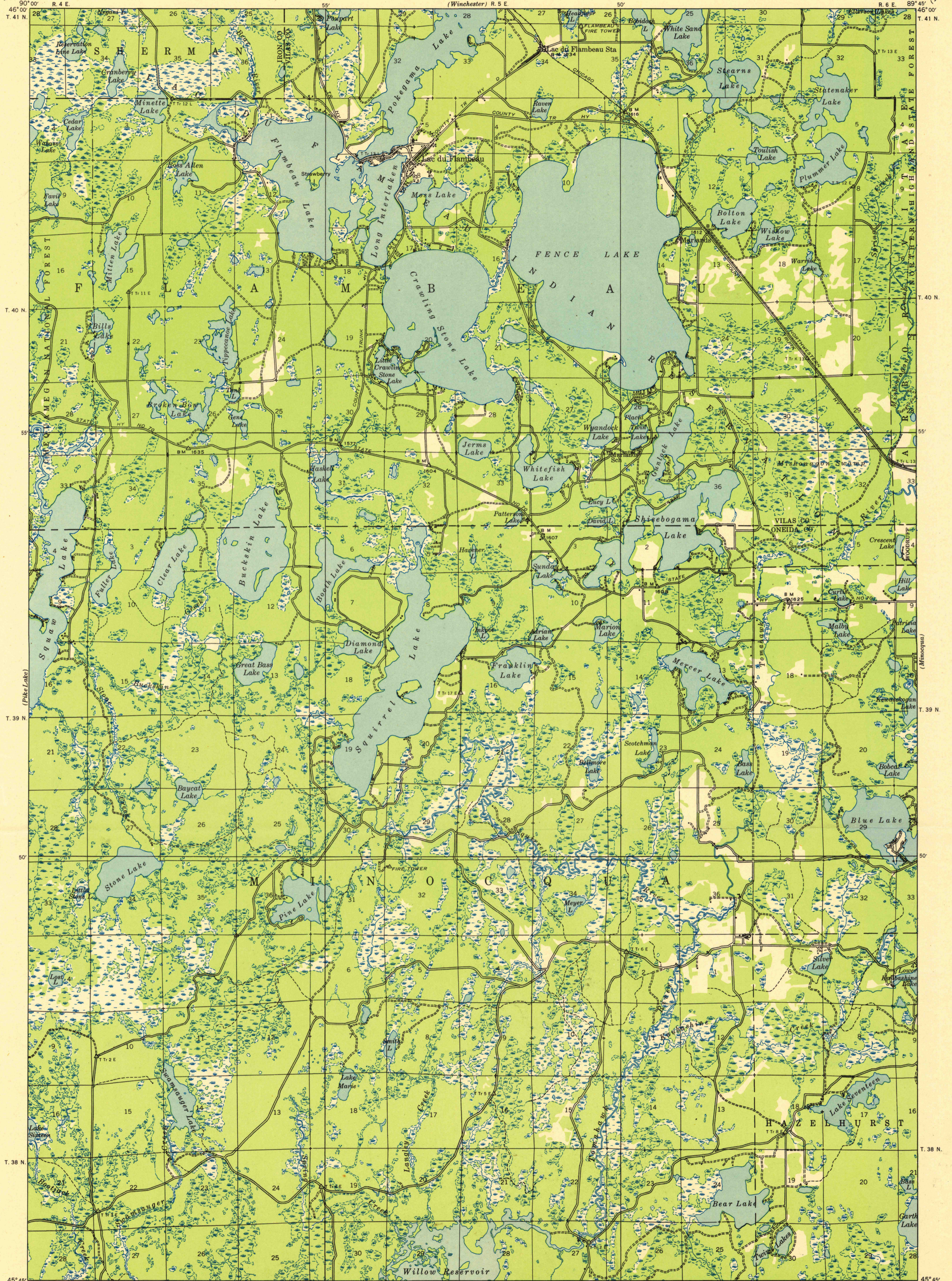
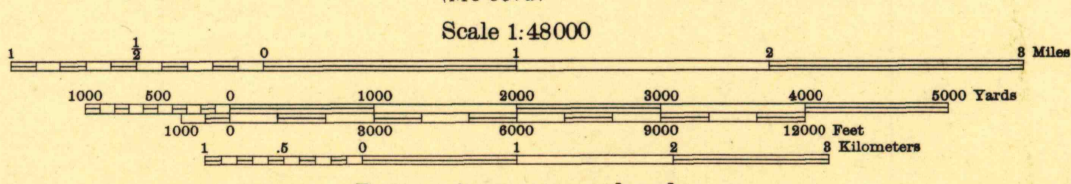


U.S.G.S.  
FILE COPY  
Inspection and Editing.



Glenn S. Smith, Division Engineer  
Compiled by Geological Survey  
from aerial photographs  
Field examination in 1938

TRUE NORTH  
MAGNETIC NORTH  
APPROXIMATE MEAN  
DECLINATION, 1938



Datum is mean sea level

FOR SALE BY U. S. GEOLOGICAL SURVEY, WASHINGTON 25, D. C.

Polyconic projection. 1927 North American datum  
+ Recovered section corners

LAC DU FLAMBEAU, WIS.

N 4545-W 8945/15

U.S.G.S.  
FILE COPY  
Inspection and Editing.

RETURN TO:  
USGS AND HISTORICAL MAP ARCHIVES