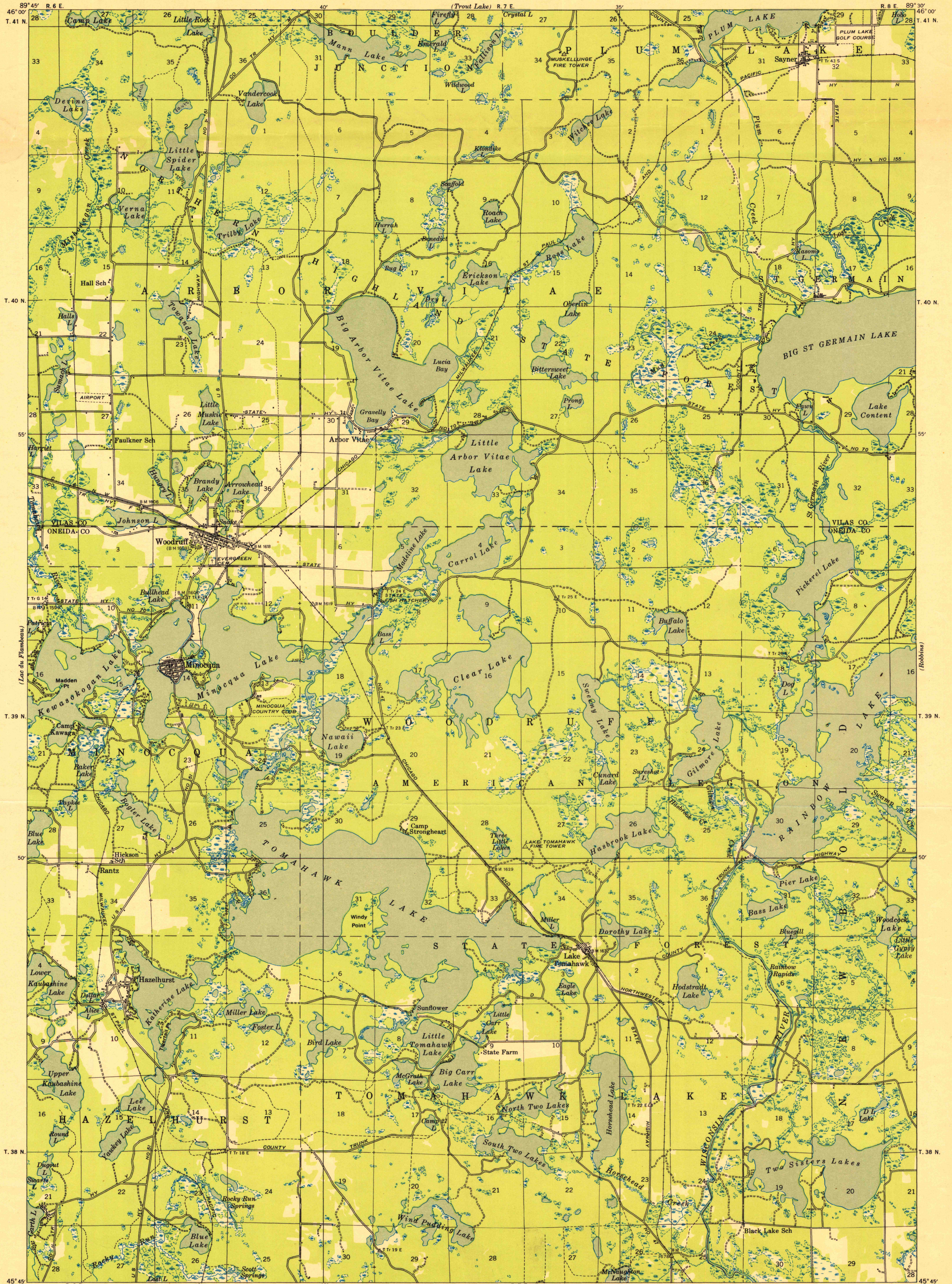


UNITED STATES  
DEPARTMENT OF THE INTERIOR  
GEOLOGICAL SURVEY

STATE OF WISCONSIN  
STATE HIGHWAY COMMISSION

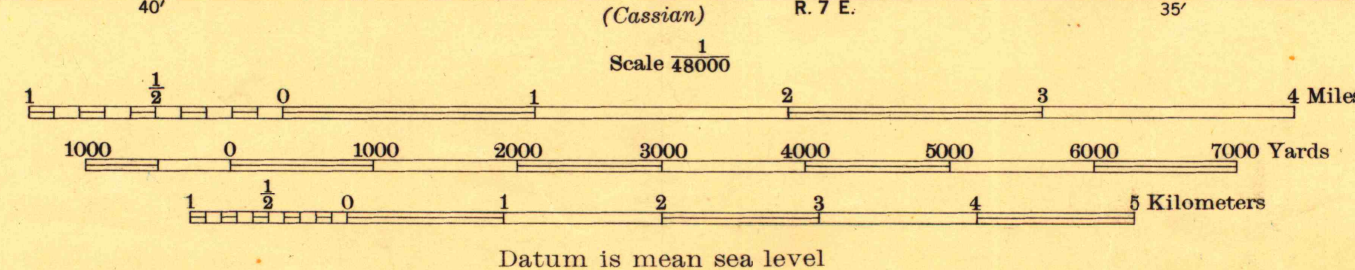
WISCONSIN  
MINOCQUA QUADRANGLE  
15-MINUTE SERIES

Advance sheet  
Subject to correction



Glenn S. Smith, Division Engineer  
Compiled by Geological Survey  
from aerial photographs  
Field examination in 1938

TRUE NORTH  
MAGNETIC NORTH  
APPROXIMATE MEAN  
DECLINATION, 1938



Polyconic projection. 1927 North American datum  
+ Recovered section corners

MINOCQUA, WIS.  
N4545-W8930/15

FOR LIBRARY USE  
ONLY

UNIVERSITY OF WISCONSIN

1938  
Copy  
1-1