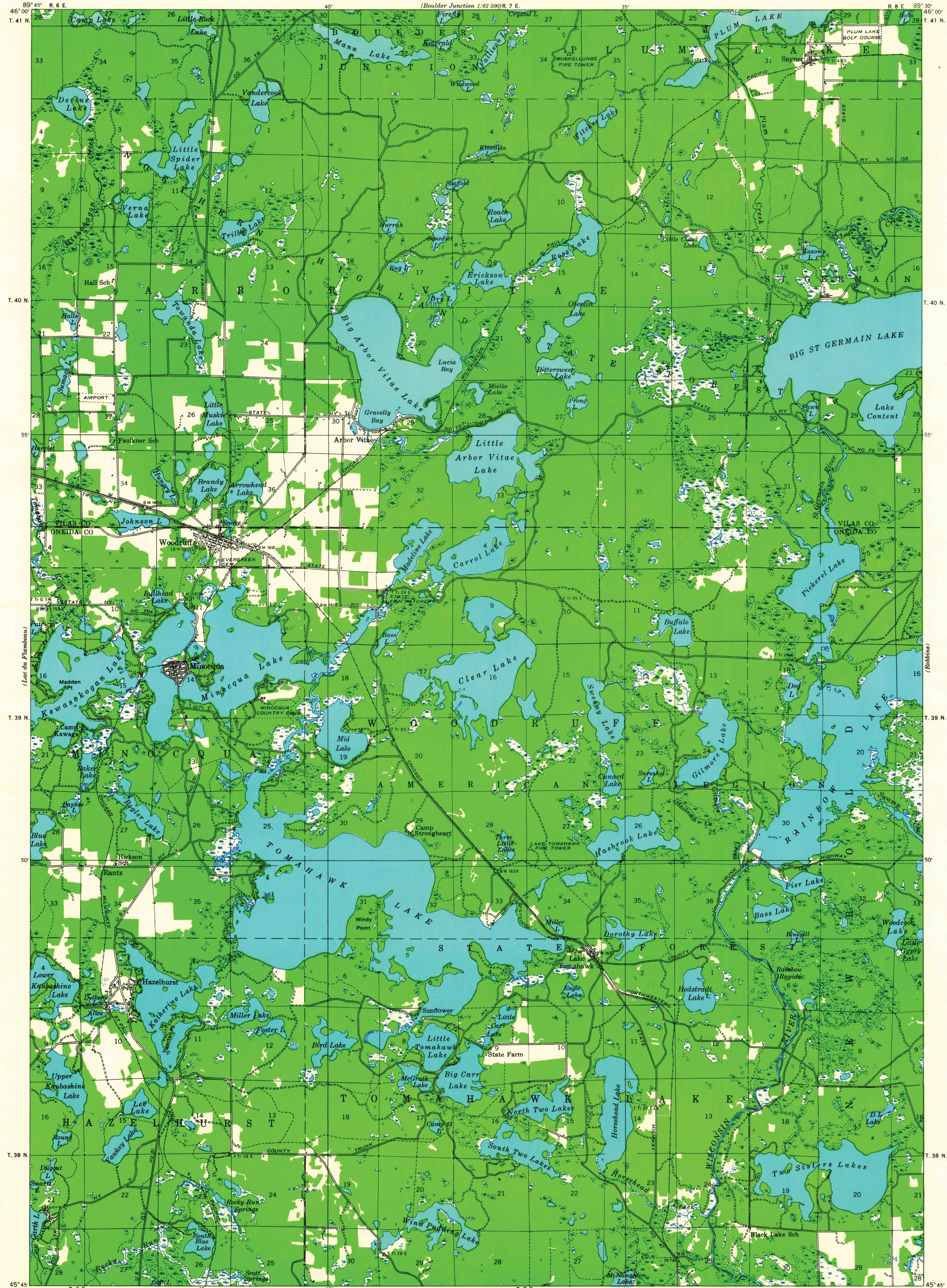


UNITED STATES
DEPARTMENT OF THE INTERIOR
GEOLOGICAL SURVEY

STATE OF WISCONSIN
STATE HIGHWAY COMMISSION

WISCONSIN
MINOCQUA QUADRANGLE
15-MINUTE SERIES



Glenn S. Smith, Division Engineer
Compiled by Geological Survey
from aerial photographs
Field examination in 1938

TRUE NORTH
MAGNETIC NORTH
APPROXIMATE MEAN
DECLINATION, 1938

SCALE 1:48,000
3000 0 3000 6000 9000 12000 15000 FEET
1 0 1 2 3 KILOMETERS
DATUM IS MEAN SEA LEVEL

FOR SALE BY U. S. GEOLOGICAL SURVEY, WASHINGTON 25, D. C.
AND BY THE WISCONSIN GEOLOGICAL AND NATURAL HISTORY SURVEY, MADISON 6, WISCONSIN
A FOLDER DESCRIBING TOPOGRAPHIC MAPS AND SYMBOLS IS AVAILABLE ON REQUEST

Polyconic projection. 1927 North American datum
+ Recovered section corners

MINOCQUA, WIS.

N 4545-W 8930/15

1938

USGS
Historical File
Topographic Division

APR 2 1964