

UNITED STATES
DEPARTMENT OF THE INTERIOR
GEOLOGICAL SURVEY

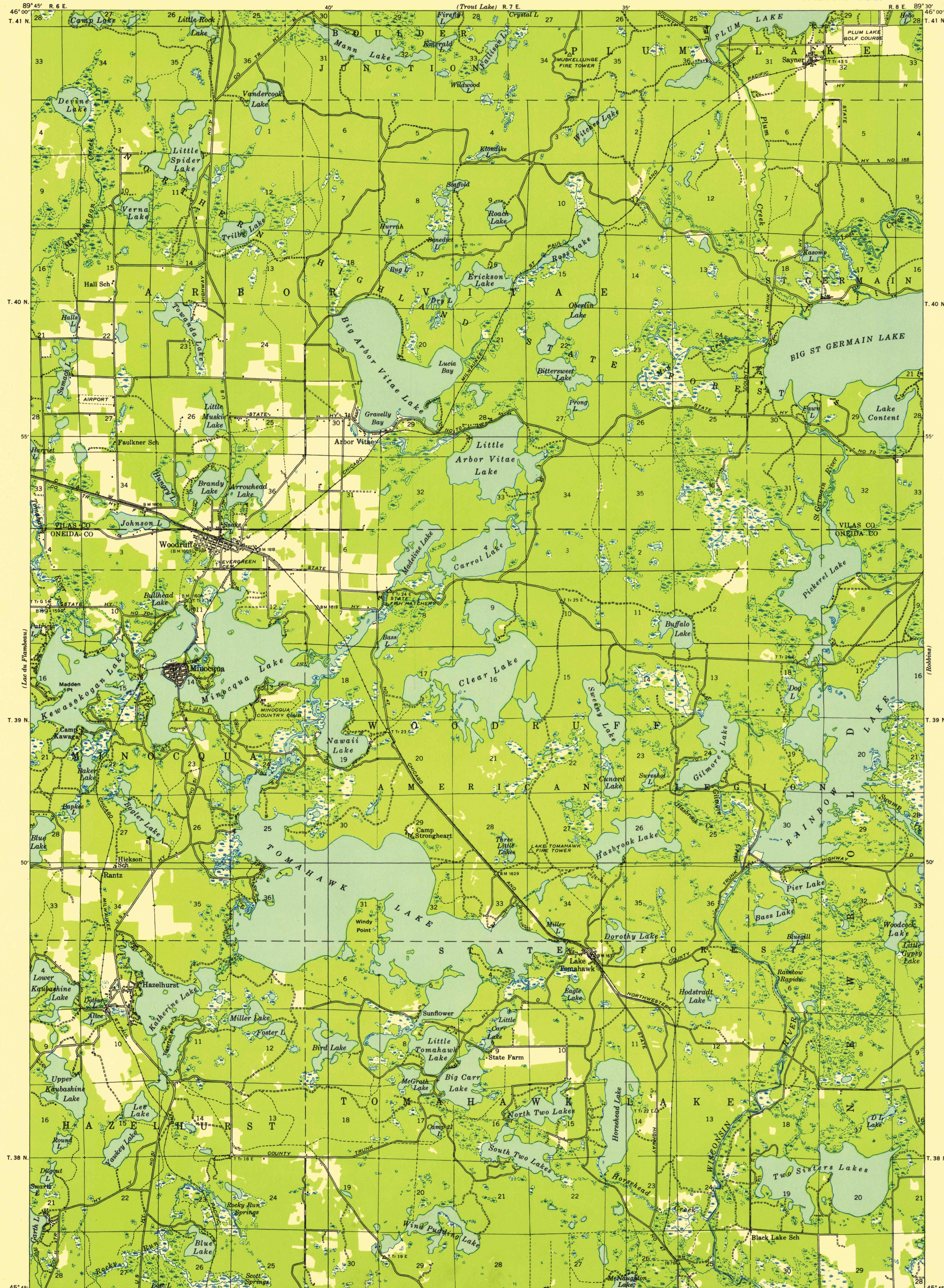
STATE OF WISCONSIN
STATE HIGHWAY COMMISSION

WISCONSIN
MINOCQUA QUADRANGLE
15-MINUTE SERIES

Advance sheet
Subject to correction

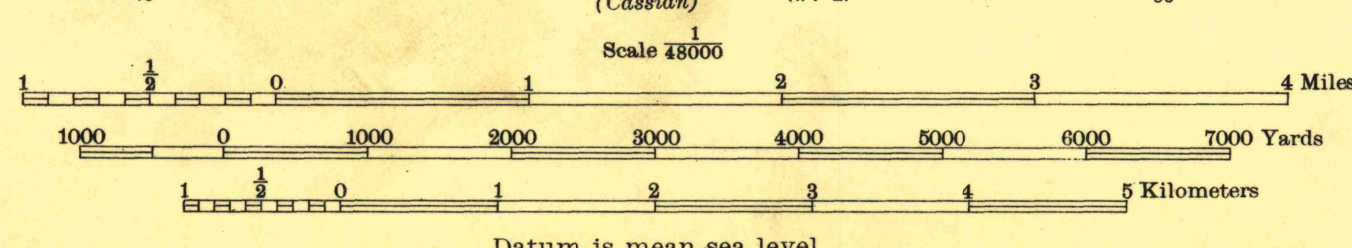
U.S.G.S.
FILE COPY
TOPOGRAPHIC DIVISION

U.S.G.S.
FILE COPY
TOPOGRAPHIC DIVISION



Glenn S. Smith, Division Engineer
Compiled by Geological Survey
from aerial photographs
Field examination in 1938

TRUE NORTH
MAGNETIC NORTH
APPROXIMATE MEAN
DECLINATION, 1938



Polyconic projection. 1927 North American datum
+ Recovered section corners

MINOCQUA, WIS.
N 4545-W 9930/15
1938

FOR SALE BY U. S. GEOLOGICAL SURVEY, WASHINGTON 25, D. C.
AND BY THE WISCONSIN GEOLOGICAL AND NATURAL HISTORY SURVEY, MADISON 6, WISCONSIN
A FOLDER DESCRIBING TOPOGRAPHIC MAPS AND SYMBOLS IS AVAILABLE ON REQUEST

USGS
Historical File
Topographic Division

FEB 15 1955