

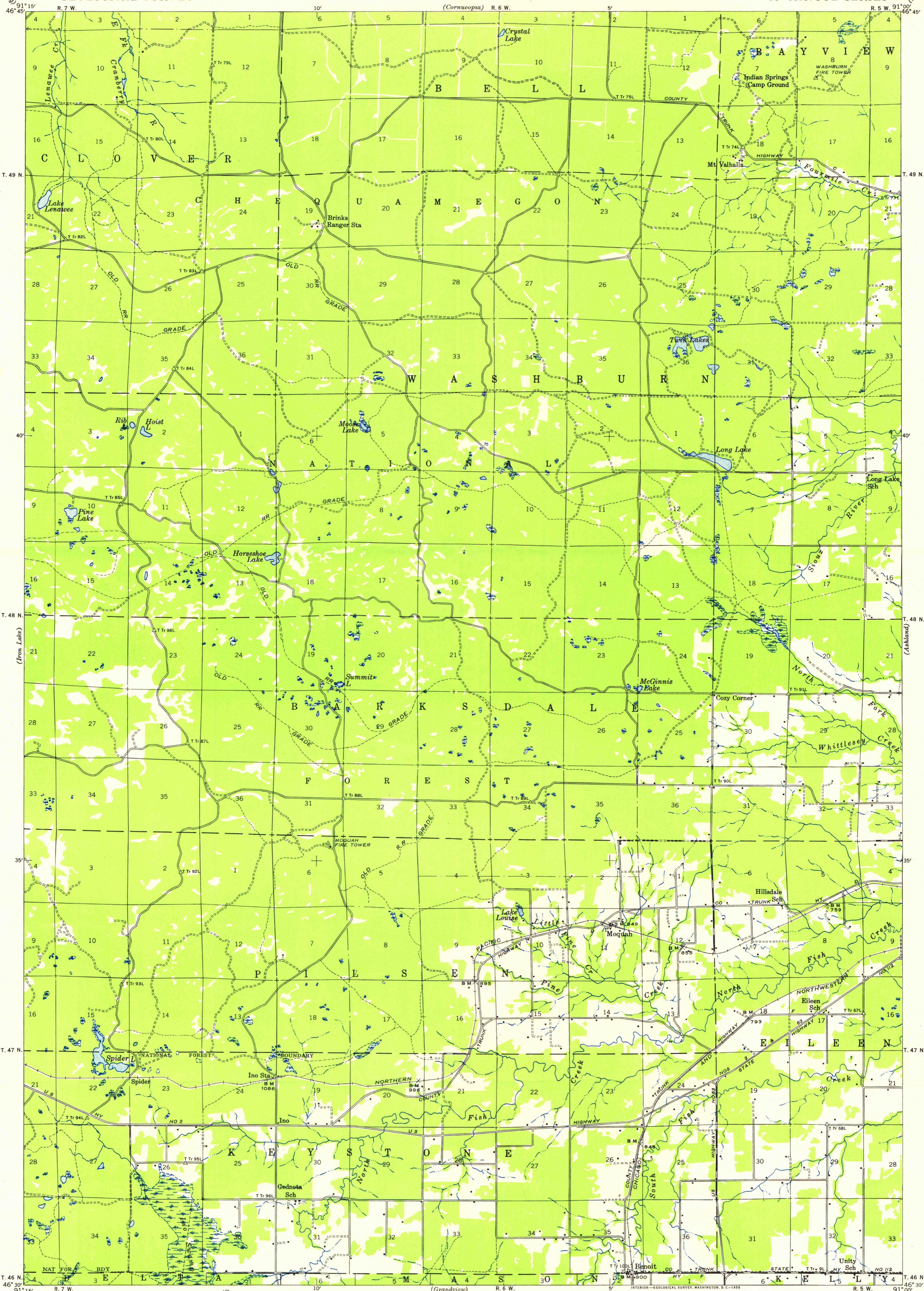
(Port Wing) 91° 15' 46" W

UNITED STATES DEPARTMENT OF THE INTERIOR GEOLOGICAL SURVEY

STATE OF WISCONSIN

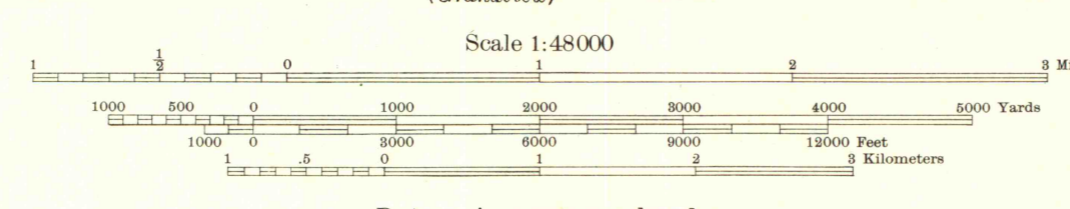
WISCONSIN (BAYFIELD COUNTY) MOQUAH QUADRANGLE 15-MINUTE SERIES

(Dowd) 91° 00' 46" W



Compiled by Geological Survey from aerial photographs Field examination in 1944

TRUE NORTH
MAGNETIC NORTH
APPROXIMATE MEAN DECLINATION, 1944



Datum is mean sea level

THIS MAP COMPLIES WITH NATIONAL MAP ACCURACY STANDARDS FOR SALE BY U. S. GEOLOGICAL SURVEY, WASHINGTON 25, D. C. AND BY THE WISCONSIN GEOLOGICAL AND NATURAL HISTORY SURVEY, MADISON 6, WISCONSIN A FOLDER DESCRIBING TOPOGRAPHIC MAPS AND SYMBOLS IS AVAILABLE ON REQUEST

Polyconic projection. 1927 North American datum
+ Recovered public land corner

MOQUAH, WIS. 1944 N4630-W9100/15

ARTHUR H. ROBINSON MAP LIBRARY University of Wisconsin-Madison

FEB 29 2007

1944 COPY 1-1