

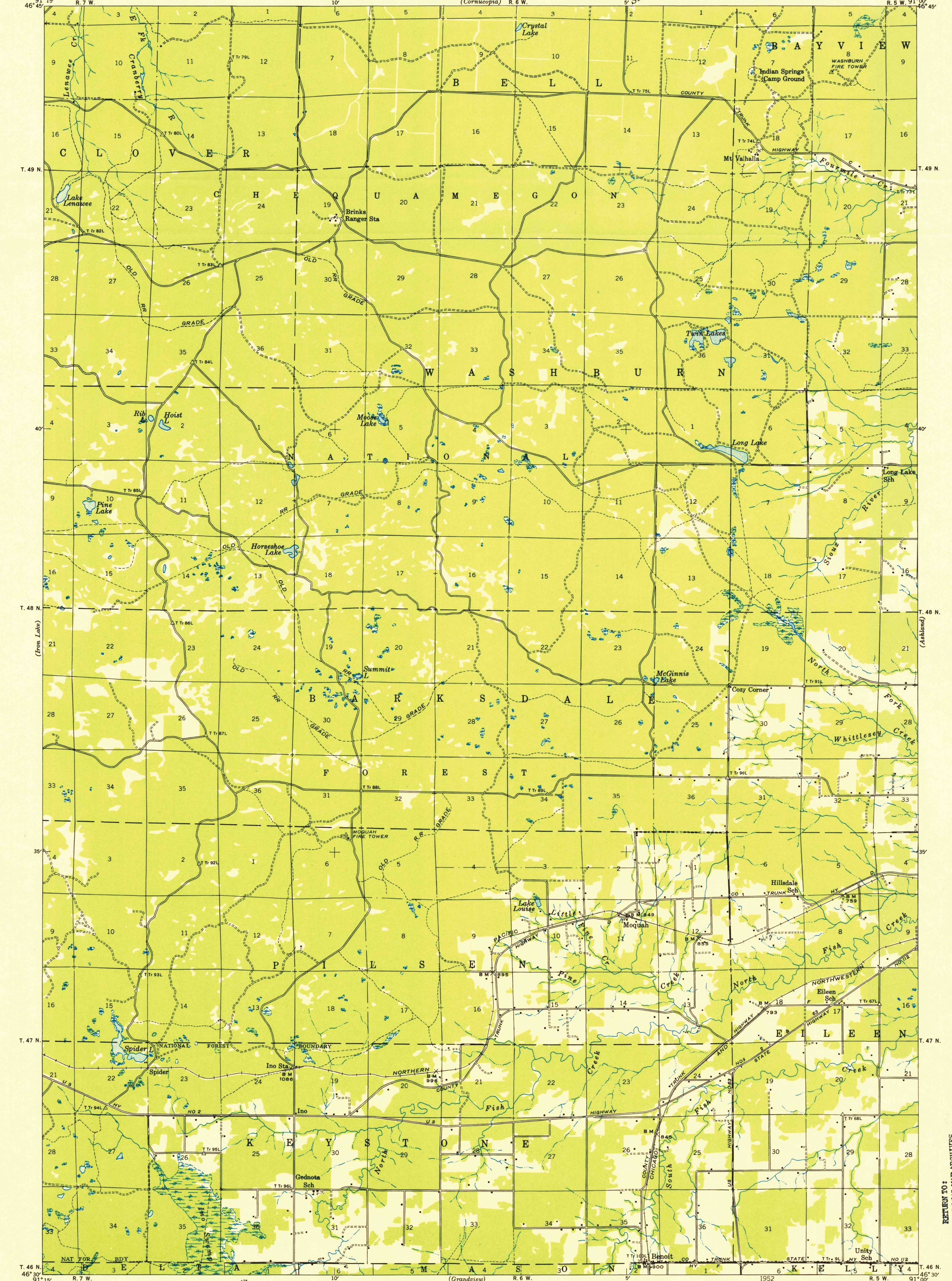
U.S.G.S. FILE COPY Inspection and Editing.

UNITED STATES DEPARTMENT OF THE INTERIOR GEOLOGICAL SURVEY

STATE OF WISCONSIN

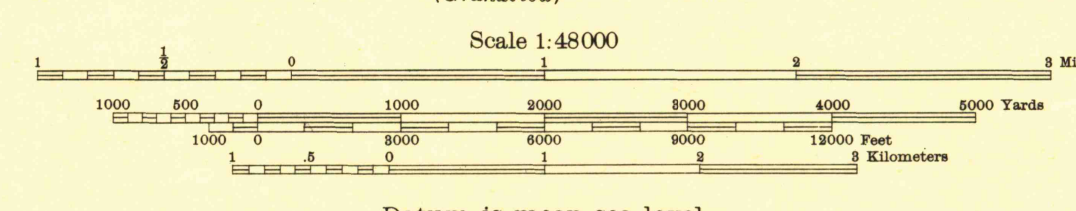
WISCONSIN (BAYFIELD COUNTY) MOQUAH QUADRANGLE 15-MINUTE SERIES

Advance sheet Subject to correction



Compiled by Geological Survey from aerial photographs Field examination in 1944

TRUE NORTH MAGNETIC NORTH APPROXIMATE MEAN DECLINATION, 1944



Datum is mean sea level

FOR SALE BY U. S. GEOLOGICAL SURVEY, WASHINGTON 25, D. C. A FOLDER DESCRIBING TOPOGRAPHIC MAPS AND SYMBOLS IS AVAILABLE ON REQUEST

U.S.G.S. FILE COPY Inspection and Editing.

MOQUAH, WIS. 1944 N4630-W9100/15

RETURN TO: U.S.G.S. HISTORICAL MAP ARCHIVES