

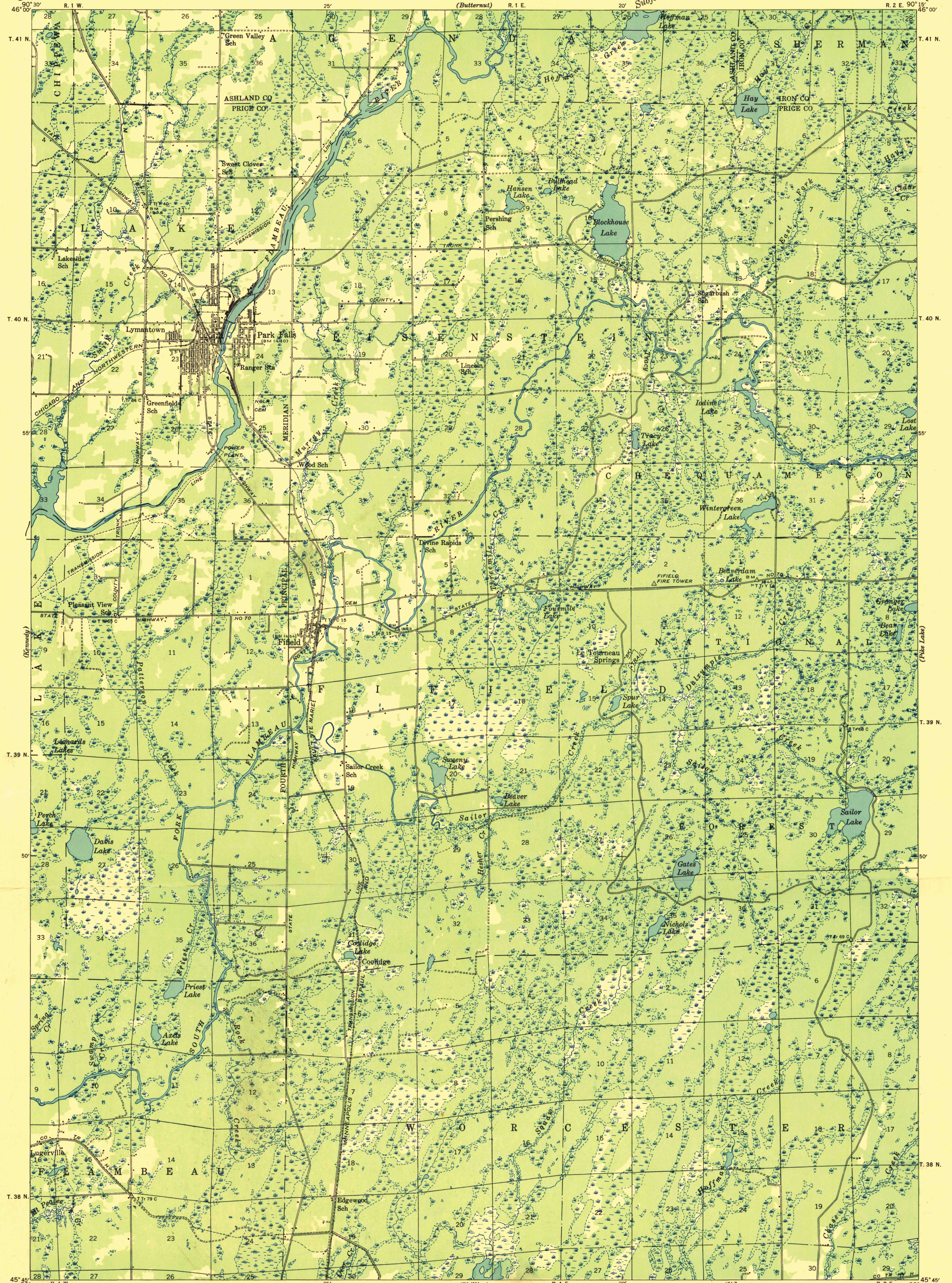
U. S. G. S.
FILE COPY
Inspection and Editing.

UNITED STATES
DEPARTMENT OF THE INTERIOR
GEOLOGICAL SURVEY

STATE OF WISCONSIN
STATE HIGHWAY COMMISSION

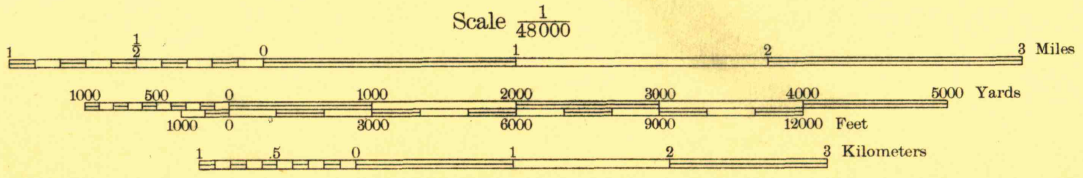
WISCONSIN
PARK FALLS QUADRANGLE
15-MINUTE SERIES

Advance sheet
Subject to correction



Compiled by Geological Survey
from aerial photographs
Field examination in 1941

TRUE NORTH
MAGNETIC NORTH
APPROXIMATE MEAN
DECLINATION, 1941



Polyconic projection. 1927 North American datum

USGS
Historical File
Topographic Division

U. S. G. S.
FILE COPY
Inspection and Editing.

PARK FALLS, WIS.

N 4545-9015/15

MAR 27 1947

1100