

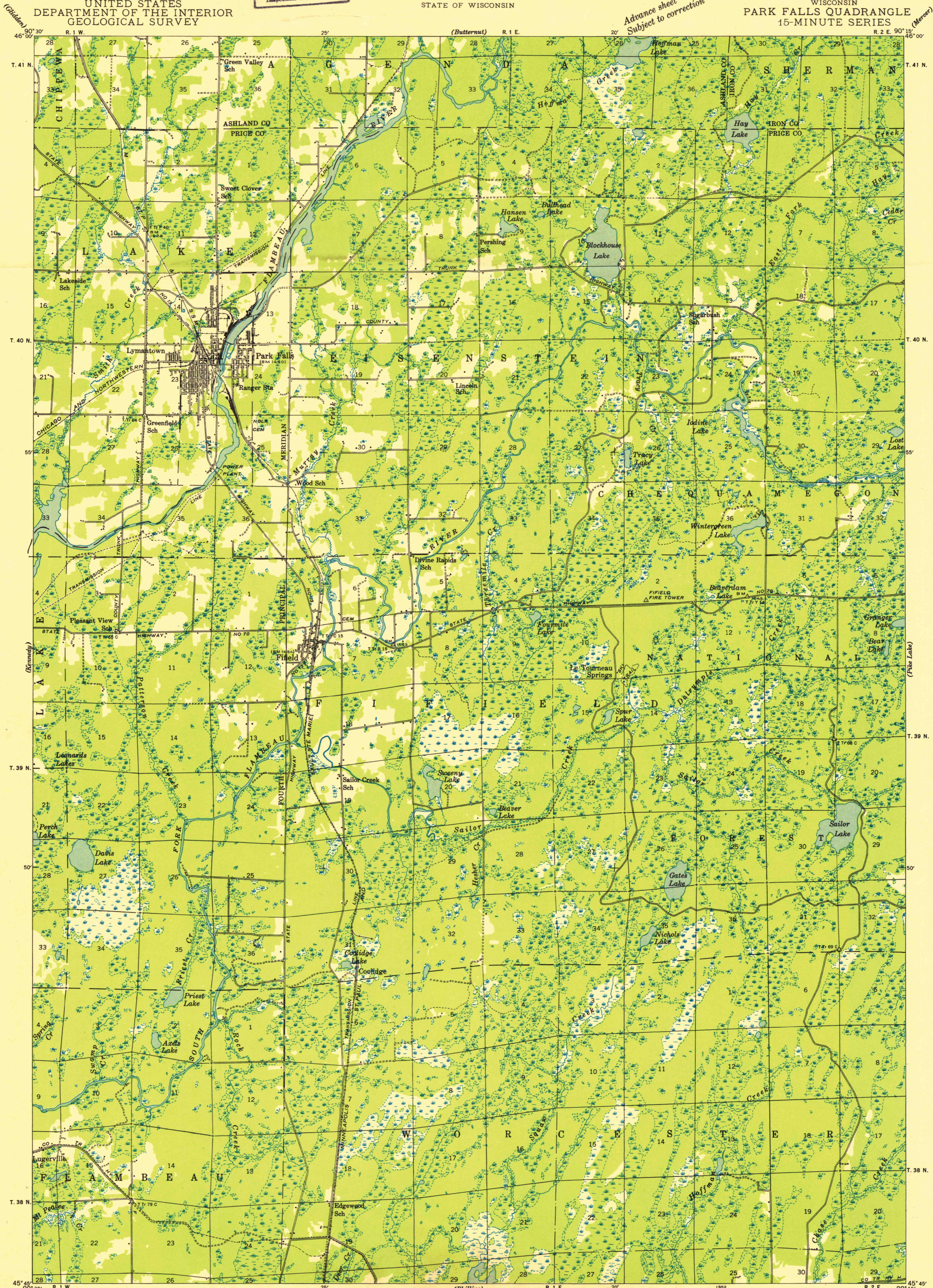
U.S.G.S. FILE COPY Inspection and Editing.

UNITED STATES DEPARTMENT OF THE INTERIOR GEOLOGICAL SURVEY

STATE OF WISCONSIN

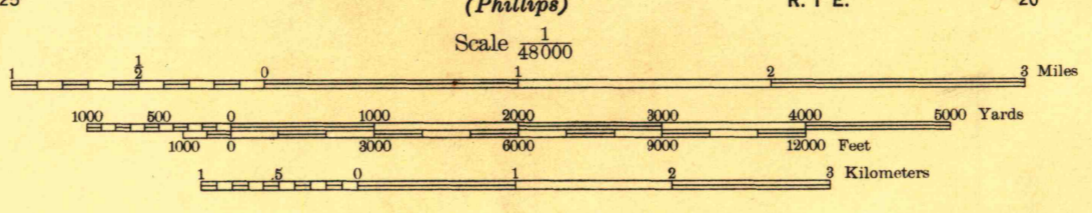
WISCONSIN PARK FALLS QUADRANGLE 15-MINUTE SERIES

Advance sheet Subject to correction



Compiled by Geological Survey from aerial photographs Field examination in 1941

TRUE NORTH 3° MAGNETIC NORTH APPROXIMATE MEAN DECLINATION, 1941



Datum is mean sea level

FOR SALE BY U. S. GEOLOGICAL SURVEY, WASHINGTON 25, D. C. A FOLDER DESCRIBING TOPOGRAPHIC MAPS AND SYMBOLS IS AVAILABLE ON REQUEST

USGS Historical File Topographic Division

PARK FALLS, WIS. 1941

N 4545-W9015/15

U.S.G.S. FILE COPY Inspection and Editing.