

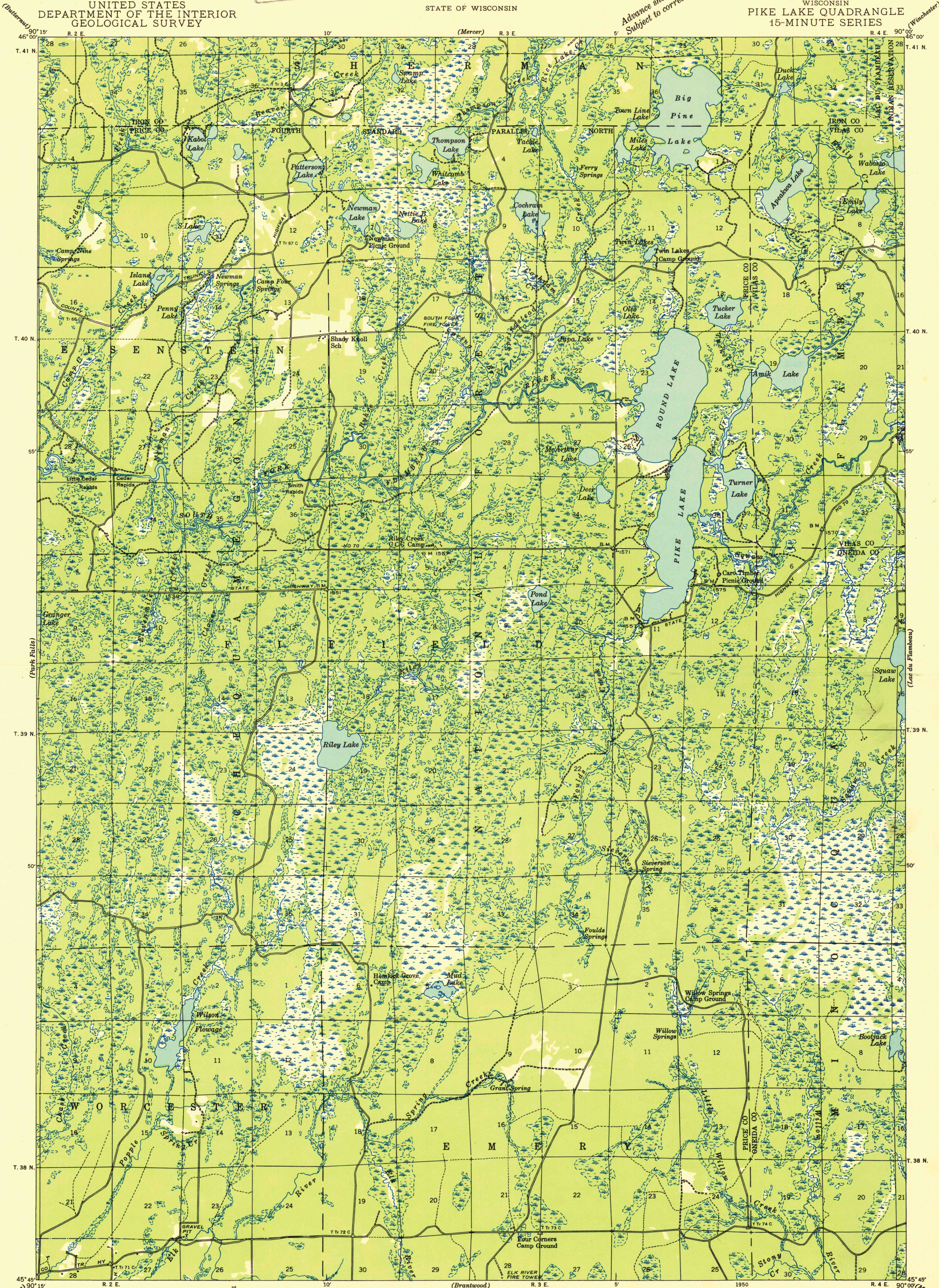
U.S.G.S.
FILE COPY
Inspection and Editing.

UNITED STATES
DEPARTMENT OF THE INTERIOR
GEOLOGICAL SURVEY

STATE OF WISCONSIN

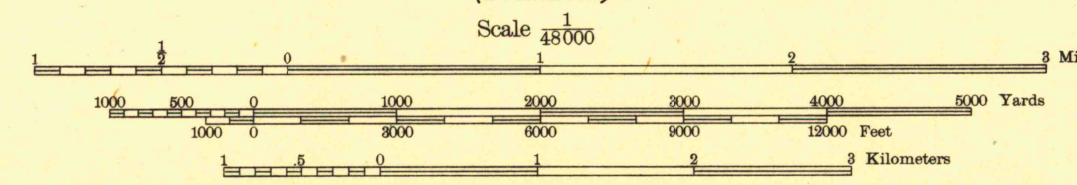
WISCONSIN
PIKE LAKE QUADRANGLE
15-MINUTE SERIES

Advance sheet
Subject to correction



Compiled by Geological Survey
from aerial photographs
Field examination in 1938 and 1941

TRUE NORTH
MAGNETIC NORTH
APPROXIMATE MEAN
DECLINATION, 1941



FOR SALE BY U. S. GEOLOGICAL SURVEY, WASHINGTON 25, D. C.
A FOLDER DESCRIBING TOPOGRAPHIC MAPS AND SYMBOLS IS AVAILABLE ON REQUEST

U.S.G.S.
FILE COPY
Inspection and Editing.

PIKE LAKE, WIS.

N4545-W9000/15

USGS
Historical File
Topographic Division

NOV 9 1950

1095