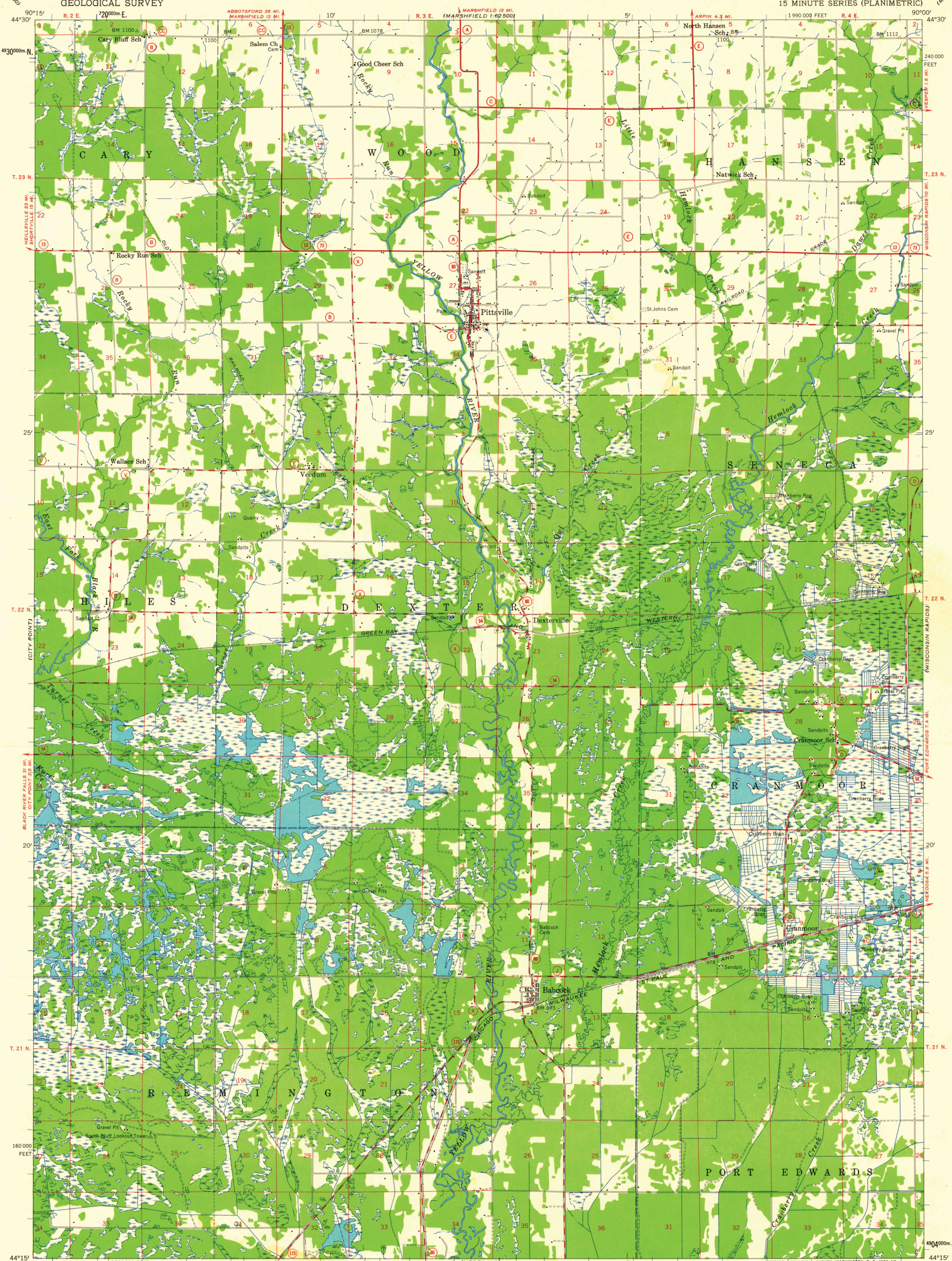


UNITED STATES  
DEPARTMENT OF THE INTERIOR  
GEOLOGICAL SURVEY

STATE OF WISCONSIN

PITTSVILLE QUADRANGLE  
WISCONSIN—WOOD CO.  
15 MINUTE SERIES (PLANIMETRIC)

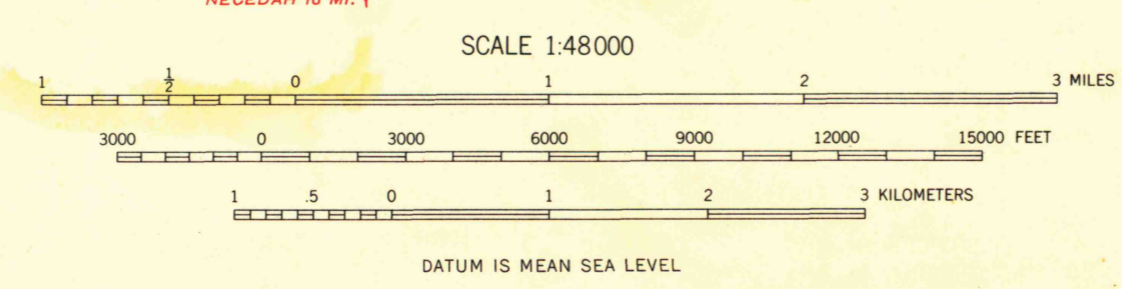


Compiled by the Geological Survey in cooperation with State of Wisconsin agencies from aerial photographs taken 1957

Field examination 1957  
Control by USGS and USC&GS  
Polyconic projection, 1927 North American datum  
10,000-foot grid based on Wisconsin coordinate system, central zone  
1000-meter Universal Transverse Mercator grid ticks, zone 15, shown in blue

**LEGEND**

County line	Horizontal control point	BM $\Delta$
Civil township line	Vertical control point	BM $\times$ 1112
Township line	Woodland	
Section line	Swamp	
Section corner: Found; Indicated	Perennial stream	
Trail	Intermittent stream	



**ROAD CLASSIFICATION**

Heavy-duty	Light-duty
Medium-duty	Unimproved dirt
State Route	

TRUE NORTH  
MAGNETIC NORTH  
APPROXIMATE MEAN DECLINATION, 1957

WISCONSIN  
QUADRANGLE LOCATION

PITTSVILLE, WIS.  
N4415-W9000/15

1957

THIS MAP COMPLIES WITH NATIONAL MAP ACCURACY STANDARDS FOR SALE BY U. S. GEOLOGICAL SURVEY, WASHINGTON 25, D. C. AND BY THE WISCONSIN GEOLOGICAL AND NATURAL HISTORY SURVEY, MADISON 6, WISCONSIN A FOLDER DESCRIBING TOPOGRAPHIC MAPS AND SYMBOLS IS AVAILABLE ON REQUEST

1957  
Copy  
1-1

MAP AND AIR PHOTO LIBRARY  
University of Wisconsin