

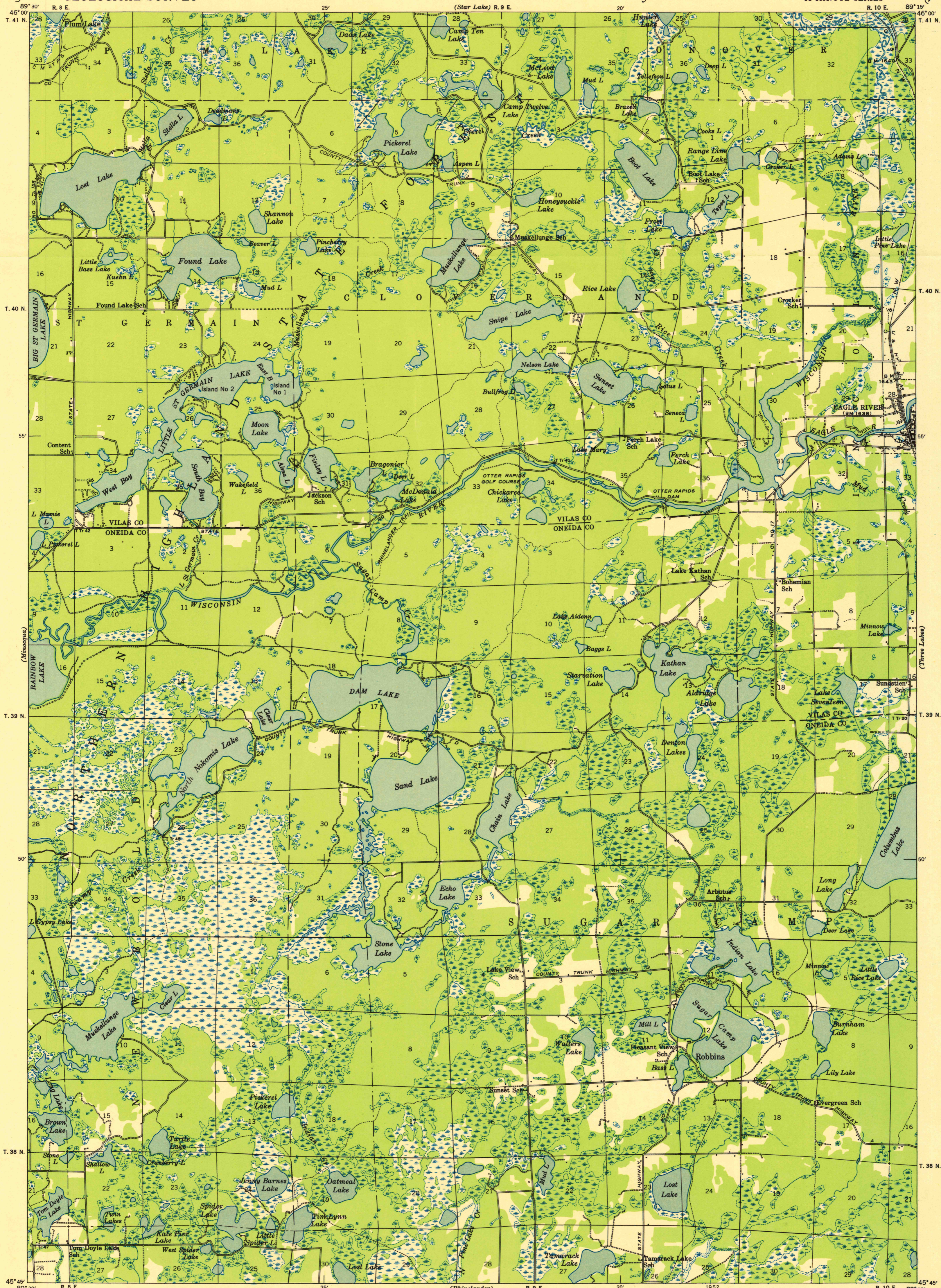
U.S.G.S.
FILE COPY
Inspection and Editing.

UNITED STATES
DEPARTMENT OF THE INTERIOR
GEOLOGICAL SURVEY

STATE OF WISCONSIN

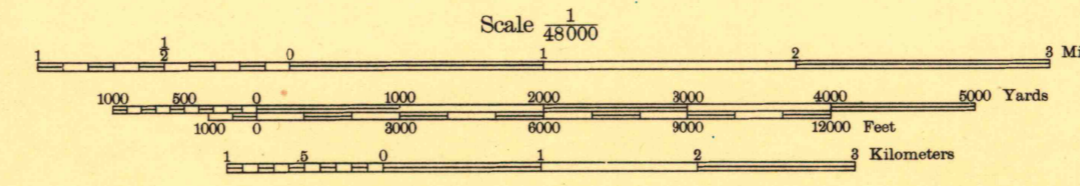
WISCONSIN
ROBBINS QUADRANGLE
15-MINUTE SERIES

Advance sheet
Subject to correction



Compiled by Geological Survey
from aerial photographs in 1930
Vilas County area revised in 1938

TRUE NORTH
MAGNETIC NORTH
APPROXIMATE MEAN
DECLINATION, 1938



Datum is mean sea level

FOR SALE BY U. S. GEOLOGICAL SURVEY, WASHINGTON 25, D. C.
A FOLDER DESCRIBING TOPOGRAPHIC MAPS AND SYMBOLS IS AVAILABLE ON REQUEST

U.S.G.S.
FILE COPY
Inspection and Editing.

Polyconic projection. 1927 North American datum
+ Recovered public land corner

ROBBINS, WIS.
1930
Minor corrections made 1938
N4545-W8915/15

USGS
Historical File
Topographic Division

MAR 13 1952 2/30