

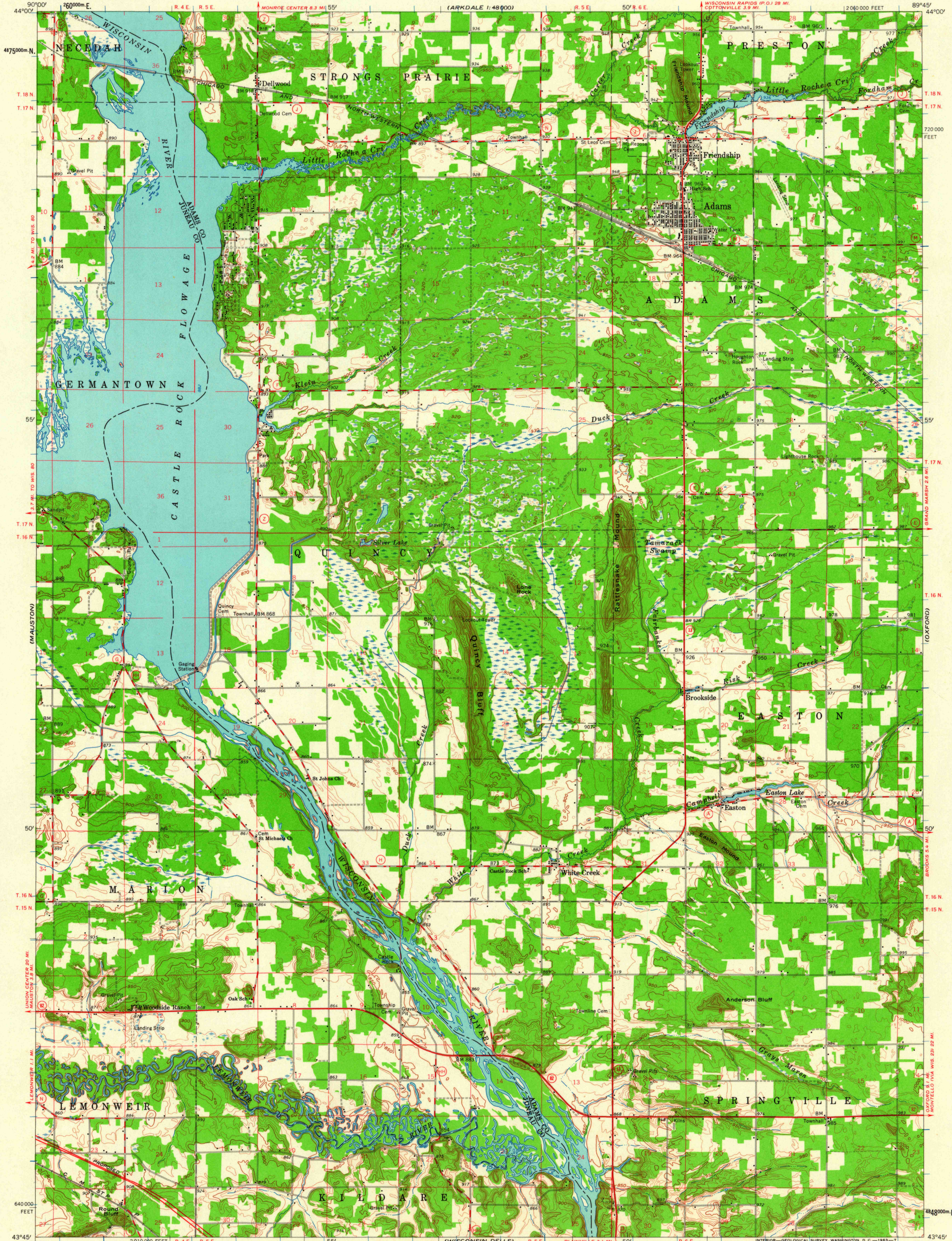
(NEEDAH 1:5000)

UNITED STATES
DEPARTMENT OF THE INTERIOR
GEOLOGICAL SURVEY

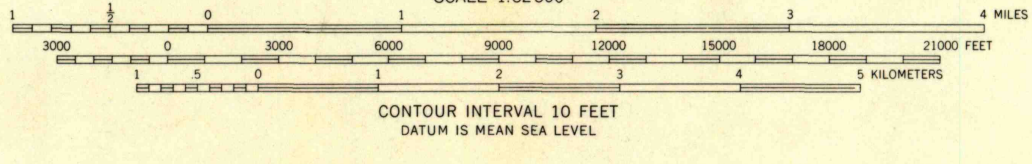
STATE OF WISCONSIN

ADAMS QUADRANGLE
WISCONSIN
15 MINUTE SERIES (TOPOGRAPHIC)

(COLOMA 1:40000)



Mapped, edited, and published by the Geological Survey in cooperation with State of Wisconsin agencies
Control by USGS and USC&GS
Topography by photogrammetric methods from aerial photographs taken 1959-60. Field checked 1961
Polyconic projection. 1927 North American datum 10,000-foot grid based on Wisconsin coordinate system, south zone 1000-meter Universal Transverse Mercator grid ticks, zone 16, shown in blue



ROAD CLASSIFICATION
 Heavy-duty ——— Light-duty ———
 Medium-duty ——— Unimproved dirt - - - -
 State Route ○



U.S.G.S.
FILE COPY

ADAMS, WIS.
N 4345—W 8945/15

1961

THIS MAP COMPLIES WITH NATIONAL MAP ACCURACY STANDARDS FOR SALE BY U. S. GEOLOGICAL SURVEY, WASHINGTON 25, D. C. AND BY THE WISCONSIN GEOLOGICAL AND NATURAL HISTORY SURVEY, MADISON 6, WISCONSIN A FOLDER DESCRIBING TOPOGRAPHIC MAPS AND SYMBOLS IS AVAILABLE ON REQUEST

JUL 11 1963

3230