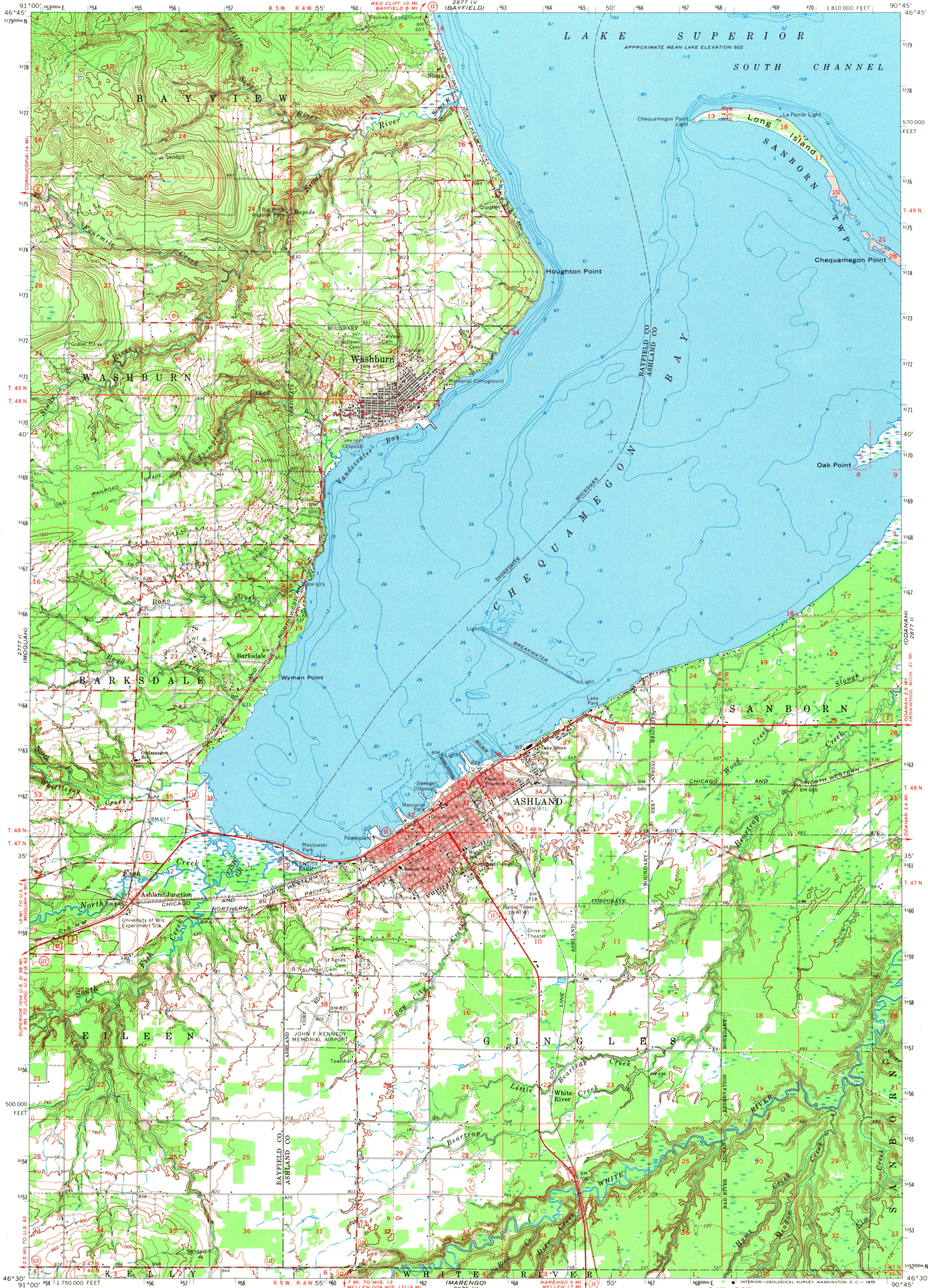


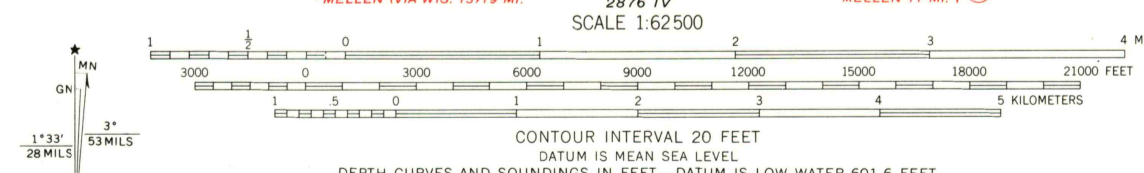
UNITED STATES  
DEPARTMENT OF THE INTERIOR  
GEOLOGICAL SURVEY

STATE OF WISCONSIN

ASHLAND QUADRANGLE  
WISCONSIN  
15 MINUTE SERIES (TOPOGRAPHIC)



Mapped, edited, and published by the Geological Survey  
in cooperation with State of Wisconsin agencies  
Control by USGS and USC&GS  
Compiled in 1965 from 1:24 000-scale maps dated 1964  
Selected hydrographic data compiled from U. S. Lake Survey  
Charts 961 (1961) and 964 (1962)  
This information is not intended for navigational purposes  
Polyconic projection; 1927 North American datum  
10,000-foot grid based on Wisconsin coordinate system,  
north zone  
1000-meter Universal Transverse Mercator grid ticks,  
zone 15, shown in blue  
Red tint indicates area in which only landmark buildings are shown



ROAD CLASSIFICATION  
Heavy-duty ——— Light-duty ———  
Medium-duty ——— Unimproved dirt ———  
U.S. Route ——— State Route ———  
This area also covered by 7.5-minute, 1:24 000-scale  
maps: Long Island 1964, Washburn 1964, Ashland West  
1964, and Ashland East 1964  
**ASHLAND, WIS.**  
N4630—W9045/15  
1964  
AMS 2877 III—SERIES V761

2777 II (MCOGLAH)  
2777 IV (BAYFIELD)  
2777 V (MELLEN)  
2777 VI (MELLEN)  
2777 VII (MELLEN)  
2777 VIII (MELLEN)  
2777 IX (MELLEN)  
2777 X (MELLEN)  
2777 XI (MELLEN)  
2777 XII (MELLEN)  
2777 XIII (MELLEN)  
2777 XIV (MELLEN)  
2777 XV (MELLEN)  
2777 XVI (MELLEN)  
2777 XVII (MELLEN)  
2777 XVIII (MELLEN)  
2777 XIX (MELLEN)  
2777 XX (MELLEN)  
2777 XXI (MELLEN)  
2777 XXII (MELLEN)  
2777 XXIII (MELLEN)  
2777 XXIV (MELLEN)  
2777 XXV (MELLEN)  
2777 XXVI (MELLEN)  
2777 XXVII (MELLEN)  
2777 XXVIII (MELLEN)  
2777 XXIX (MELLEN)  
2777 XXX (MELLEN)

2777 I (MELLEN)  
2777 II (MELLEN)  
2777 III (MELLEN)  
2777 IV (MELLEN)  
2777 V (MELLEN)  
2777 VI (MELLEN)  
2777 VII (MELLEN)  
2777 VIII (MELLEN)  
2777 IX (MELLEN)  
2777 X (MELLEN)  
2777 XI (MELLEN)  
2777 XII (MELLEN)  
2777 XIII (MELLEN)  
2777 XIV (MELLEN)  
2777 XV (MELLEN)  
2777 XVI (MELLEN)  
2777 XVII (MELLEN)  
2777 XVIII (MELLEN)  
2777 XIX (MELLEN)  
2777 XX (MELLEN)  
2777 XXI (MELLEN)  
2777 XXII (MELLEN)  
2777 XXIII (MELLEN)  
2777 XXIV (MELLEN)  
2777 XXV (MELLEN)  
2777 XXVI (MELLEN)  
2777 XXVII (MELLEN)  
2777 XXVIII (MELLEN)  
2777 XXIX (MELLEN)  
2777 XXX (MELLEN)