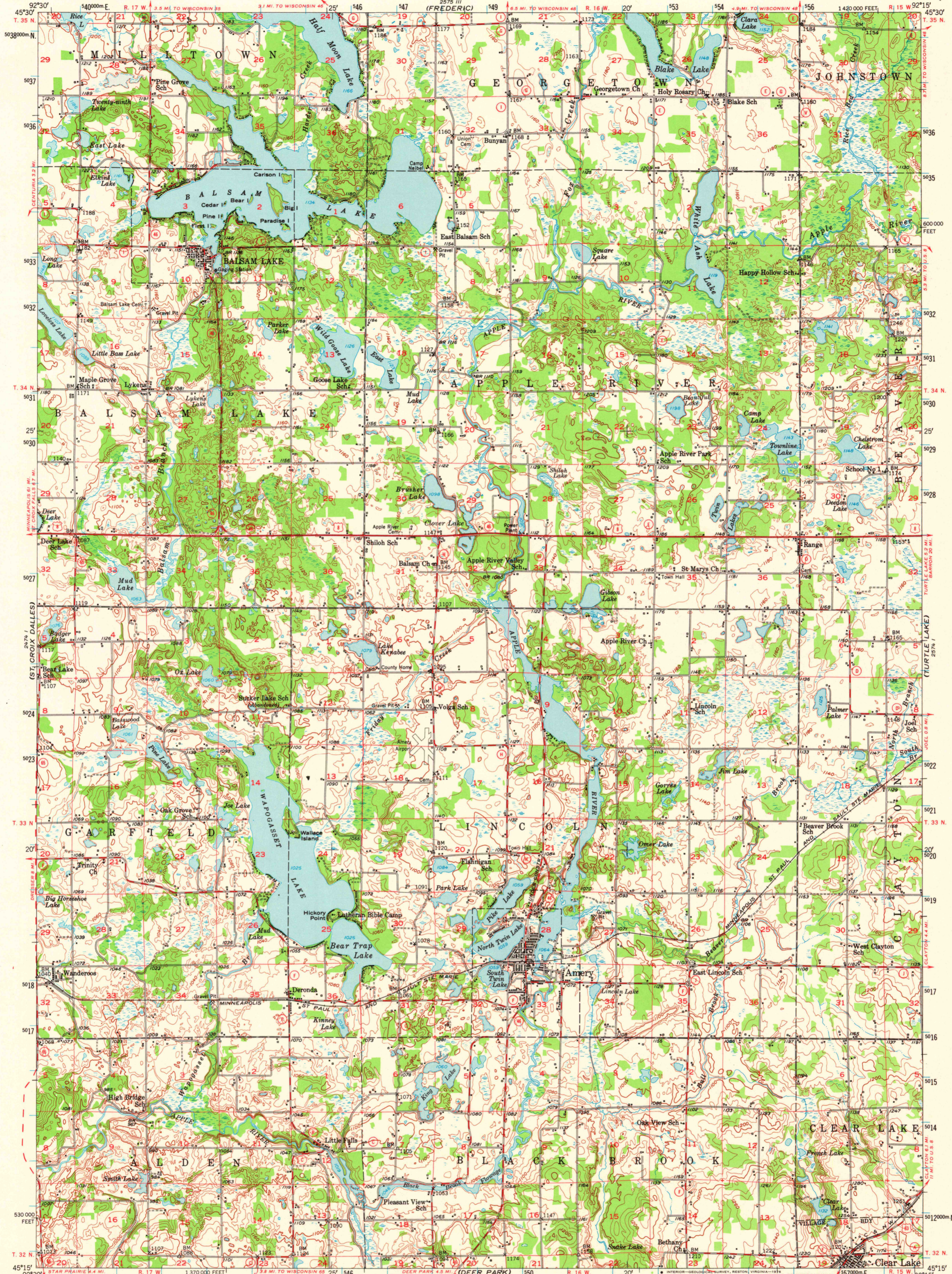


UNITED STATES
DEPARTMENT OF THE INTERIOR
GEOLOGICAL SURVEY

BALSAM LAKE QUADRANGLE
WISCONSIN-POLK CO.
15 MINUTE SERIES (TOPOGRAPHIC)

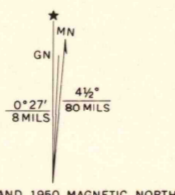


Mapped, edited, and published by the Geological Survey

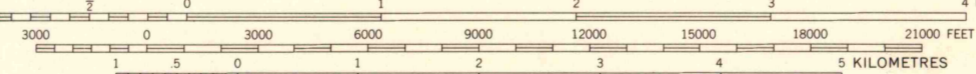
Control by USGS and USC&GS

Topography from aerial photographs by multiplex methods
Aerial photographs taken 1947. Field check 1950

Polyconic projection. 1927 North American datum
10,000-foot grid based on Wisconsin coordinate system,
central zone
1000-metre Universal Transverse Mercator grid ticks,
zone 15, shown in blue



SCALE 1:62,500



CONTOUR INTERVAL 20 FEET
NATIONAL GEODETIC VERTICAL DATUM OF 1929

ROAD CLASSIFICATION
Heavy-duty ——— 4 LANE I LANE Light-duty - - - - -
Medium-duty ——— 4 LANE I LANE Unimproved dirt - - - - -
U. S. Route (red circle with number) State Route (black circle with number)

BALSAM LAKE, WIS.
N4515-W9215/15

1950

AMS 2574 IV-SERIES V761

THIS MAP COMPLIES WITH NATIONAL MAP ACCURACY STANDARDS
FOR SALE BY U. S. GEOLOGICAL SURVEY, RESTON, VIRGINIA 22092
A FOLDER DESCRIBING TOPOGRAPHIC MAPS AND SYMBOLS IS AVAILABLE ON REQUEST