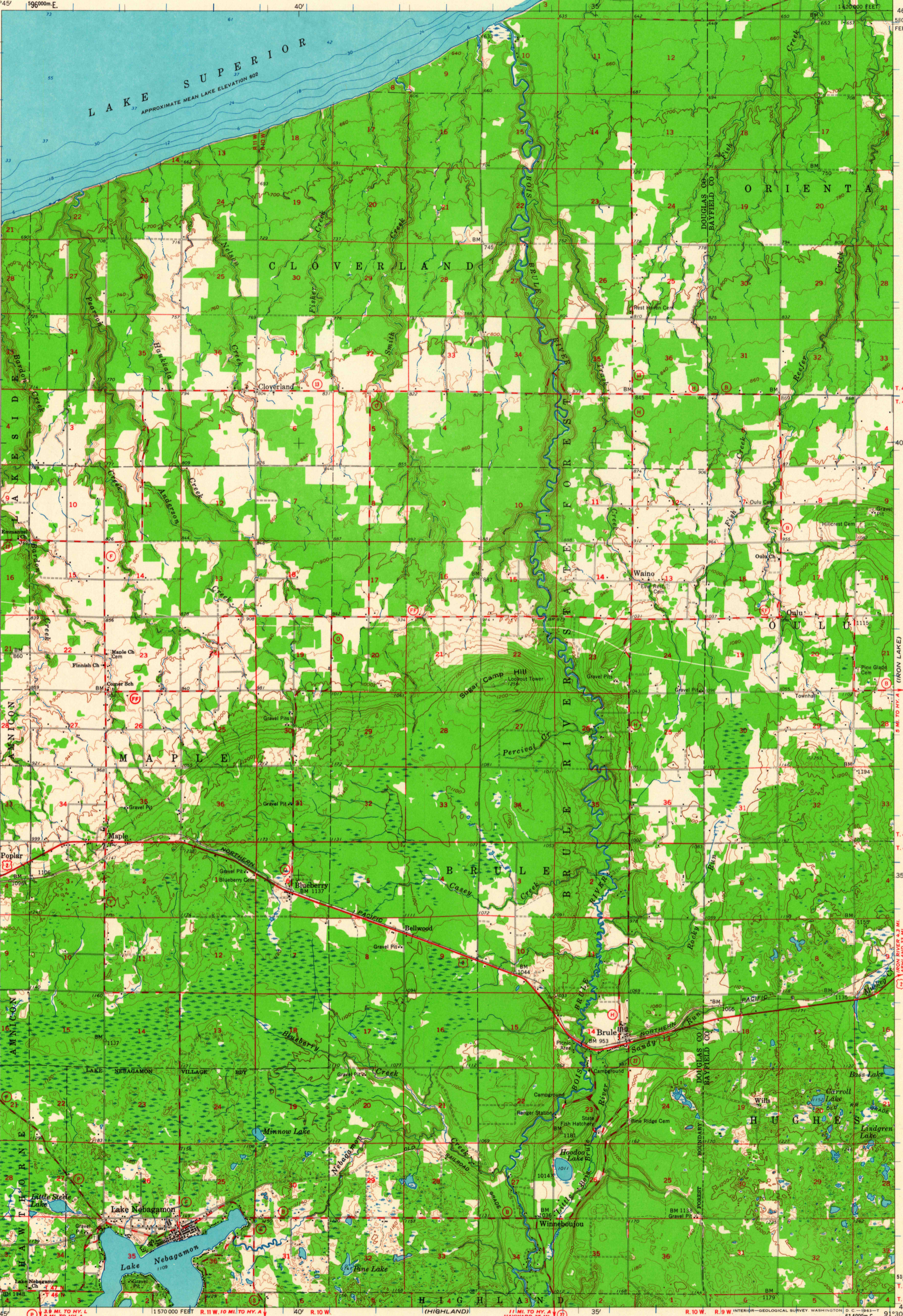


91°45'
46°45'
5177000m N

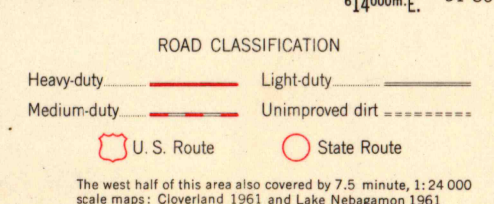
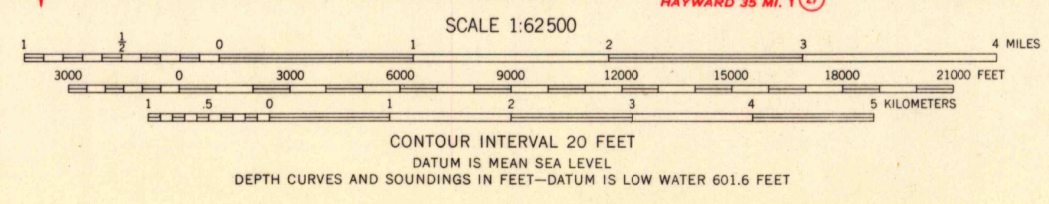
POPULAR NE 1:24,000
T. 49 N.
T. 48 N.
T. 47 N.
T. 46 N.

500,000 FEET

46°30'
91°45'



Maped, edited, and published by the Geological Survey
Control by USGS and USC&GS
West half compiled in 1963 from 1:24 000-scale maps dated 1961. East half topography by photogrammetric methods from aerial photographs taken 1959. Field checked 1961
Selected hydrographic data compiled from U.S. Lake Survey Chart 96 (1961). This information is not intended for navigational purposes
Polyconic projection. 1927 North American datum
10,000-foot grid based on Wisconsin coordinate system, north zone
1000-meter Universal Transverse Mercator grid ticks, zone 15, shown in blue



THIS MAP COMPLIES WITH NATIONAL MAP ACCURACY STANDARDS
FOR SALE BY U.S. GEOLOGICAL SURVEY, WASHINGTON 25, D. C.
AND BY THE WISCONSIN GEOLOGICAL AND NATURAL HISTORY SURVEY, MADISON 6, WISCONSIN
A FOLDER DESCRIBING TOPOGRAPHIC MAPS AND SYMBOLS IS AVAILABLE ON REQUEST

BRULE, WIS.
N 4630—W 9130/15
1961

NOV 19 1963

U.S.G.S.
FILE COPY
TOPOGRAPHIC DIVISION
(DRUMMOND 1:48,000)

3010