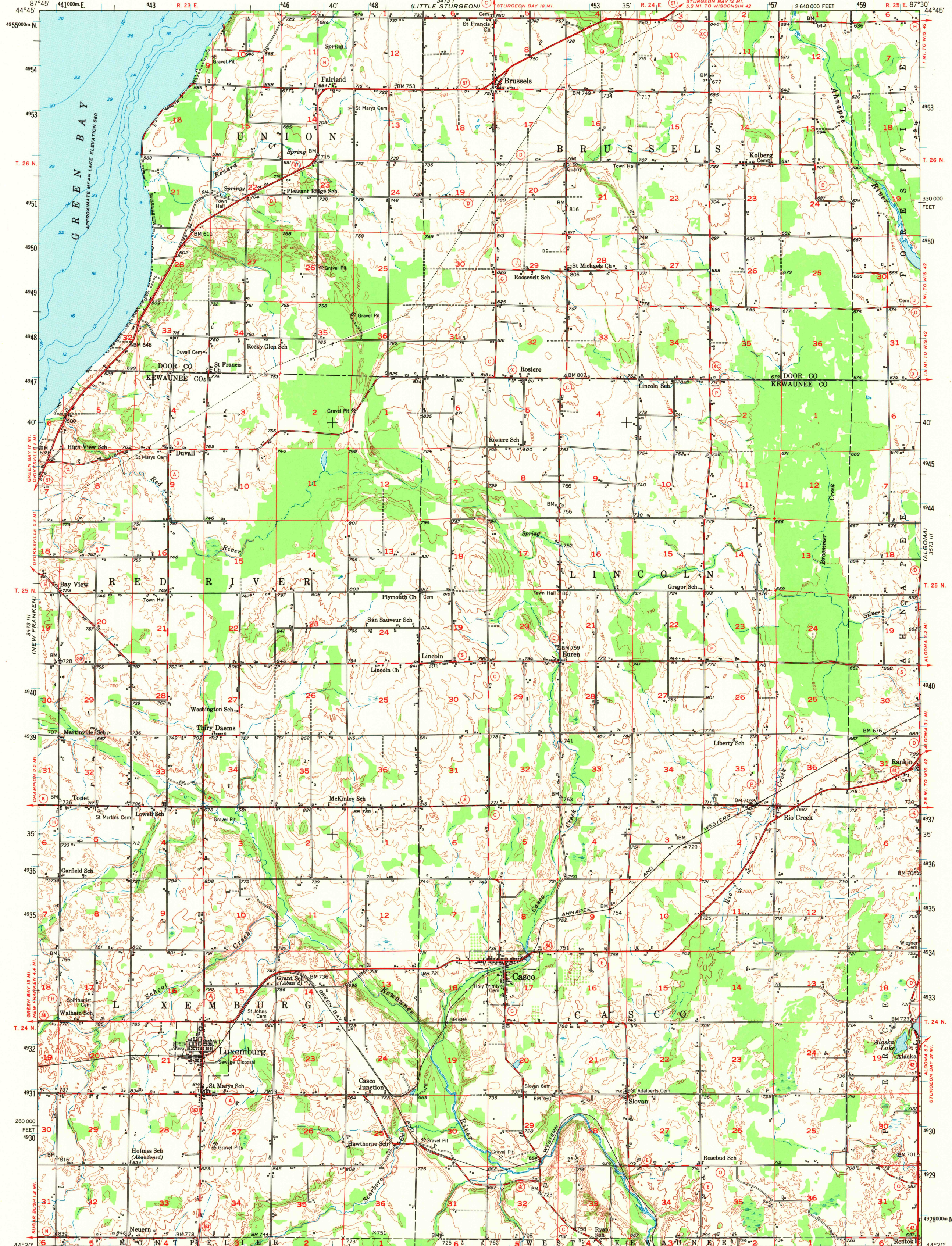


3473 II
(CONT'D)

UNITED STATES
DEPARTMENT OF THE INTERIOR
GEOLOGICAL SURVEY

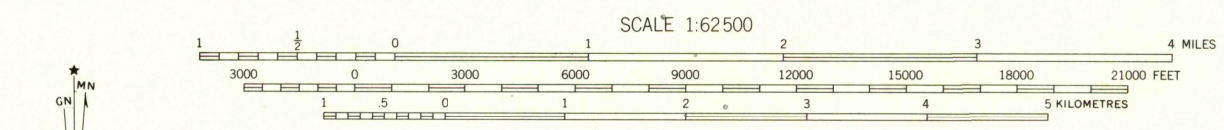
CASCO QUADRANGLE
WISCONSIN
15 MINUTE SERIES (TOPOGRAPHIC)

3473 IV
(STURGEON BAY)

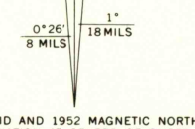


(DENMARK)
3472 IV

Mapped, edited, and published by the Geological Survey
Control by USGS and USCGS
Topography from aerial photographs by Kesh plotter
and by plane-table surveys 1952. Aerial photographs taken 1951
Hydrography from US Lake Survey Chart 703 (1:80,000)
Polyconic projection. 1927 North American datum
10,000-foot grid based on Wisconsin coordinate system,
central zone
1000-metre Universal Transverse Mercator grid ticks,
zone 16, shown in blue



ROAD CLASSIFICATION
Heavy-duty 4 LANE LANE Light-duty
Medium-duty 4 LANE LANE Unimproved dirt
U. S. Route State Route



CONTOUR INTERVAL 20 FEET
DOTTED LINES REPRESENT HALF-INTERVAL CONTOURS
NATIONAL GEODETIC VERTICAL DATUM OF 1929
DEPTH CURVES AND SOUNDINGS IN FEET—DATUM IS 578 FEET



THIS MAP COMPLIES WITH NATIONAL MAP ACCURACY STANDARDS
FOR SALE BY U. S. GEOLOGICAL SURVEY, RESTON, VIRGINIA 22092
AND BY THE WISCONSIN GEOLOGICAL AND NATURAL HISTORY SURVEY, MADISON, WISCONSIN 53706
A FOLDER DESCRIBING TOPOGRAPHIC MAPS AND SYMBOLS IS AVAILABLE ON REQUEST

CASCO, WIS.
N4430-W8730/15

1952

AMS 3473 II—SERIES V761