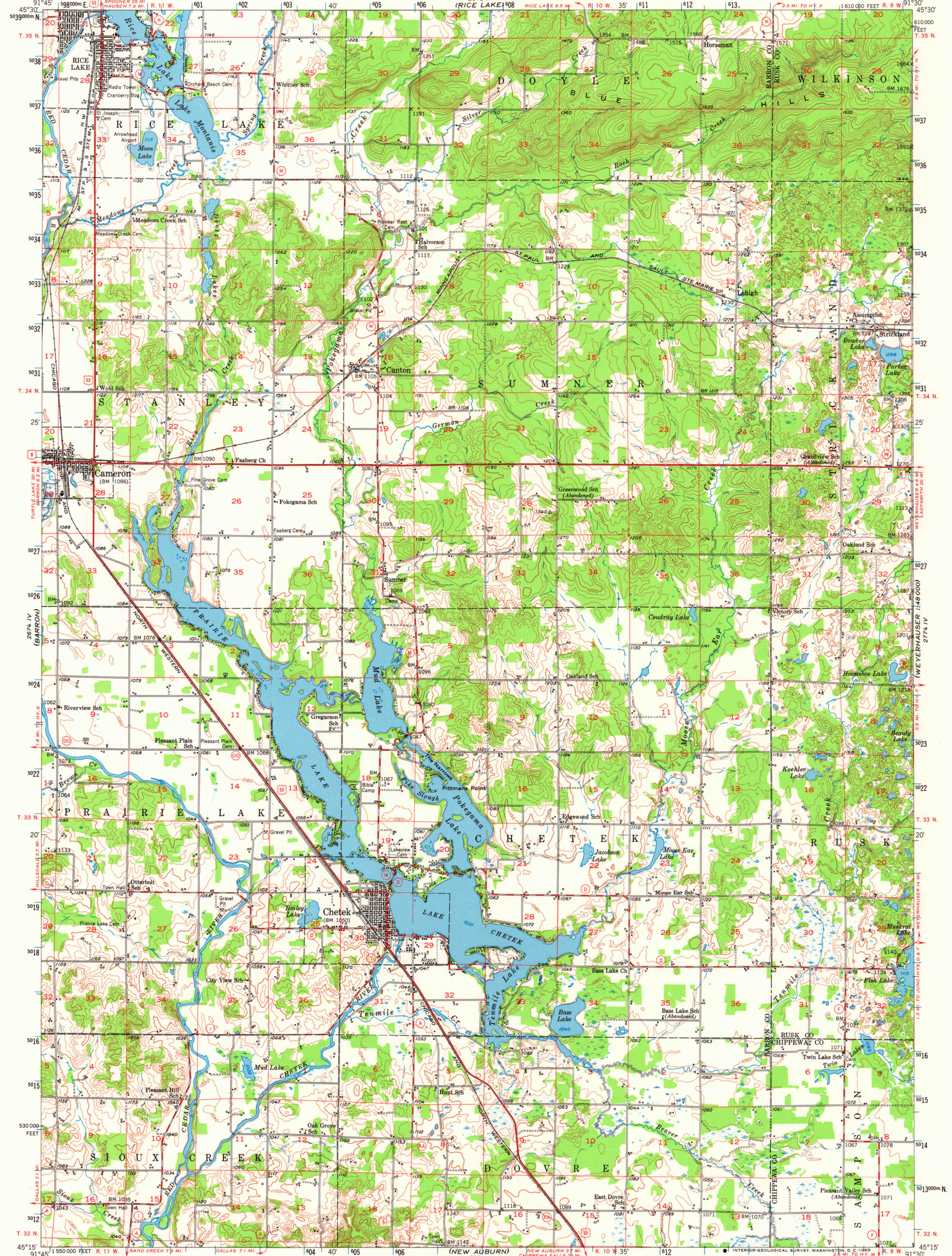
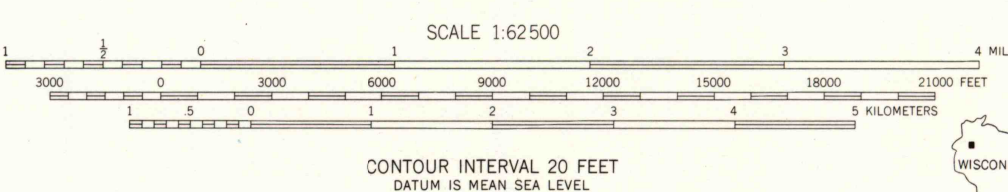


UNITED STATES
DEPARTMENT OF THE INTERIOR
GEOLOGICAL SURVEY

CHETEK QUADRANGLE
WISCONSIN
15 MINUTE SERIES (TOPOGRAPHIC)



Mapped, edited, and published by the Geological Survey
Control by USGS and USC&GS
Topography from aerial photographs by multiplex methods
Aerial photographs taken 1948. Field check 1951
Polyconic projection. 1927 North American datum
10,000-foot grid based on Wisconsin coordinate system,
central zone
1000-meter Universal Transverse Mercator grid ticks,
zone 15, shown in blue



ROAD CLASSIFICATION
Heavy-duty ——— *LANE IS LANE Light-duty ———
Medium-duty ——— *LANE IS LANE Unimproved dirt ———
U.S. Route □ State Route ○

THIS MAP COMPLIES WITH NATIONAL MAP ACCURACY STANDARDS
FOR SALE BY U.S. GEOLOGICAL SURVEY, WASHINGTON, D. C. 20242
A FOLDER DESCRIBING TOPOGRAPHIC MAPS AND SYMBOLS IS AVAILABLE ON REQUEST

CHETEK, WIS.
N4515—W9130/15
1951
AMS 2674 1—SERIES V761