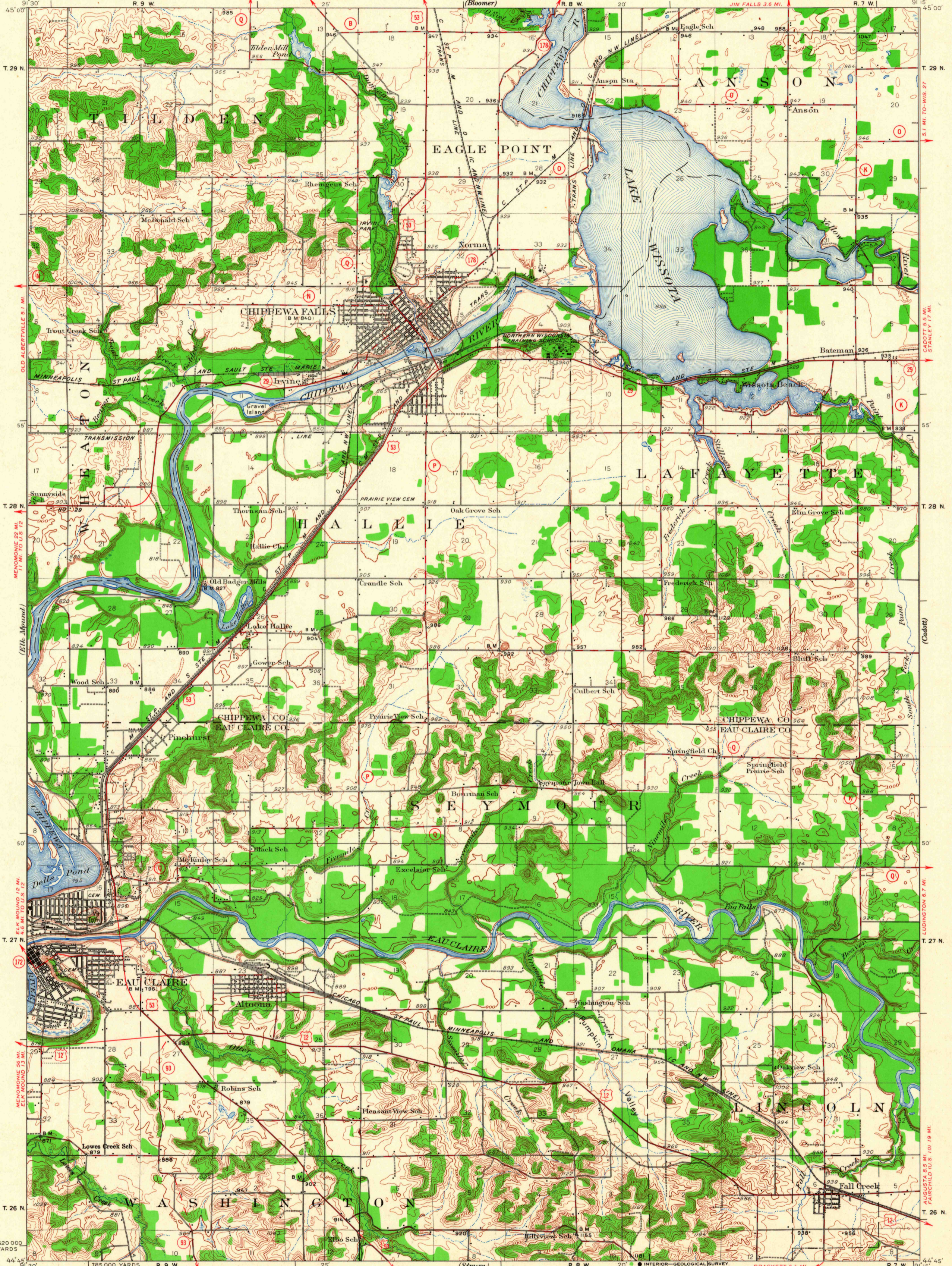


UNITED STATES
DEPARTMENT OF THE INTERIOR
GEOLOGICAL SURVEY

STATE OF WISCONSIN
GEOLOGICAL AND NATURAL HISTORY SURVEY

WISCONSIN
CHIPPEWA FALLS QUADRANGLE



Topography by J. G. Staack, J. C. Hilliard, W. A. Tingey, J. A. Law, H. F. Leo, A. W. Thomas, C. E. Weishappte, and A. H. Hintz. Culture and drainage in part compiled from aerial photographs taken by Air Corps, U. S. Army. Control by U. S. Geological Survey. Surveyed in 1928 and 1934. Chippewa River surveyed in 1928 in cooperation with the War Department.

SCALE 1:62,500
Contour interval 20 feet
Datum is mean sea level

U.S.G.S. CHIPPewa FALLS, WIS.
N4445-W9115/15
1934
Polyconic projection. North American datum
5000 yard grid based upon U.S. zone system, C

ROAD CLASSIFICATION
 HARD-SURFACE ALL WEATHER ROADS DRY WEATHER ROADS
 Heavy-duty ———— LAKE LAKE Improved dirt ————
 Medium-duty ———— LAKE LAKE Unimproved dirt ————
 U. S. Route State Route

FOR SALE BY U. S. GEOLOGICAL SURVEY, WASHINGTON, D. C. 20242
AND WISCONSIN GEOLOGICAL AND NATURAL HISTORY SURVEY, MADISON, WISCONSIN 53706
A FOLDER DESCRIBING TOPOGRAPHIC MAPS AND SYMBOLS IS AVAILABLE ON REQUEST

U.S.G.S. CHIPPewa FALLS, WIS.
N4445-W9115/15
1934
Polyconic projection. North American datum
5000 yard grid based upon U.S. zone system, C

1875
DEC 7 1967