

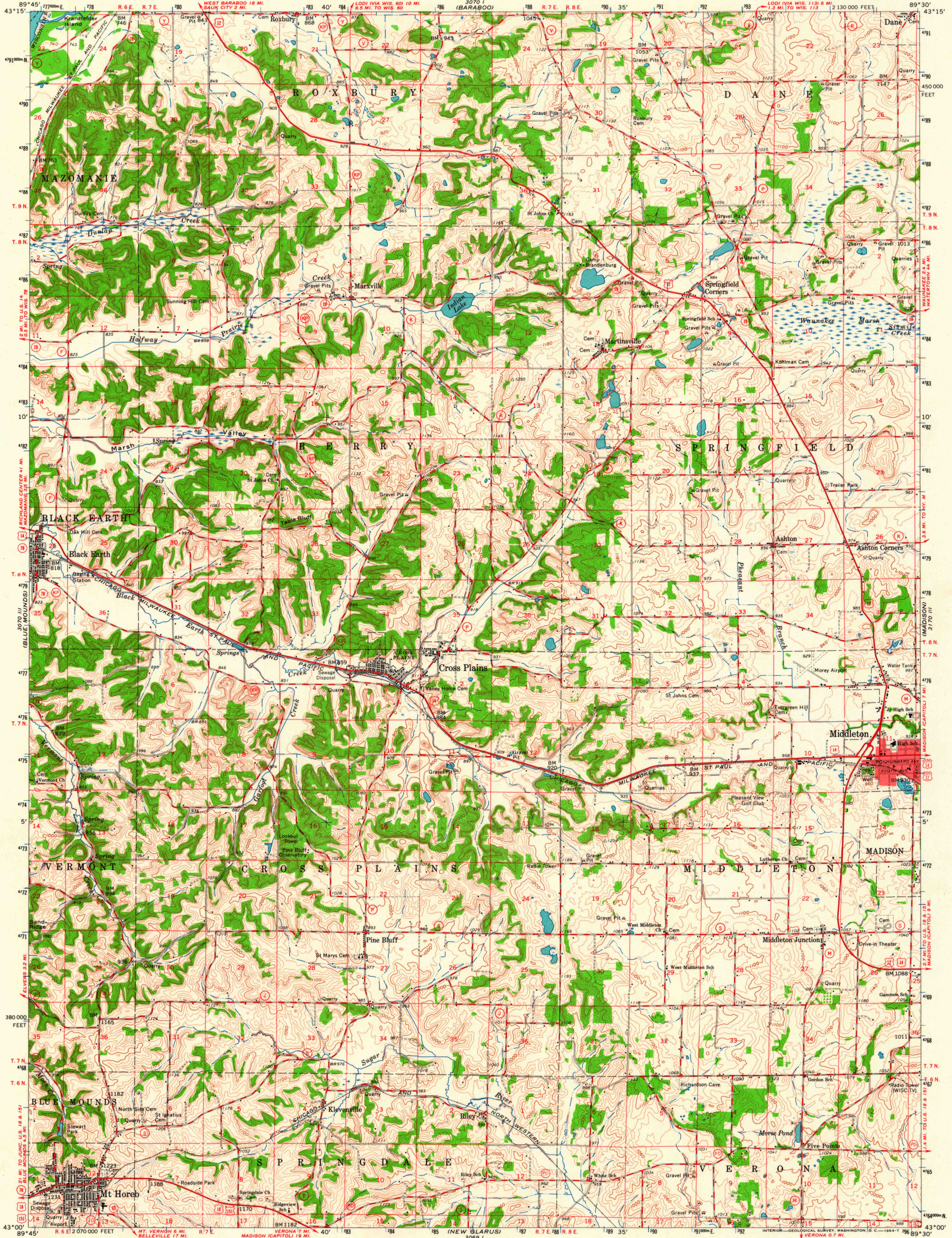
NORTH FREEDOM
1970 IV

UNITED STATES
DEPARTMENT OF THE INTERIOR
GEOLOGICAL SURVEY

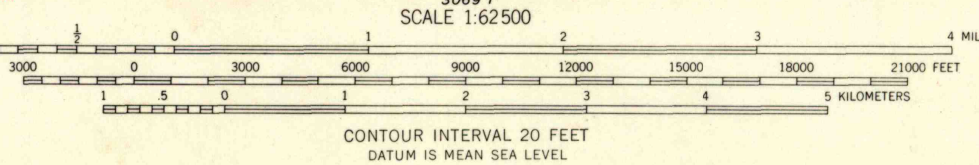
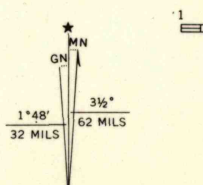
STATE OF WISCONSIN

CROSS PLAINS QUADRANGLE
WISCONSIN-DANE CO.
15 MINUTE SERIES (TOPOGRAPHIC)

3170 IV
POYNETTE



Mapped, edited, and published by the Geological Survey in cooperation with State of Wisconsin agencies
Control by USGS and USC&GS
Topography by photogrammetric methods from aerial photographs taken 1960. Field checked 1962
Polyconic projection. 1927 North American datum
10,000-foot grid based on Wisconsin coordinate system, south zone
1000-meter Universal Transverse Mercator grid ticks, zone 16, shown in blue
Red tint indicates area in which only landmark buildings are shown



CONTOUR INTERVAL 20 FEET
DATUM IS MEAN SEA LEVEL

THIS MAP COMPLIES WITH NATIONAL MAP ACCURACY STANDARDS FOR SALE BY U. S. GEOLOGICAL SURVEY, WASHINGTON 25, D. C. AND BY THE WISCONSIN GEOLOGICAL AND NATURAL HISTORY SURVEY, MADISON 6, WISCONSIN A FOLDER DESCRIBING TOPOGRAPHIC MAPS AND SYMBOLS IS AVAILABLE ON REQUEST

ROAD CLASSIFICATION

Heavy-duty	Light-duty
Medium-duty	Unimproved dirt
U. S. Route	State Route



U.S.G.S.
CROSS PLAINS, WIS.
N4300-W8930/15
1962
AMS 3070 II-SERIES V761

BLANCHARDVILLE
3069 IV

EVANSVILLE
3169 IV

FEB 12 1964

2925