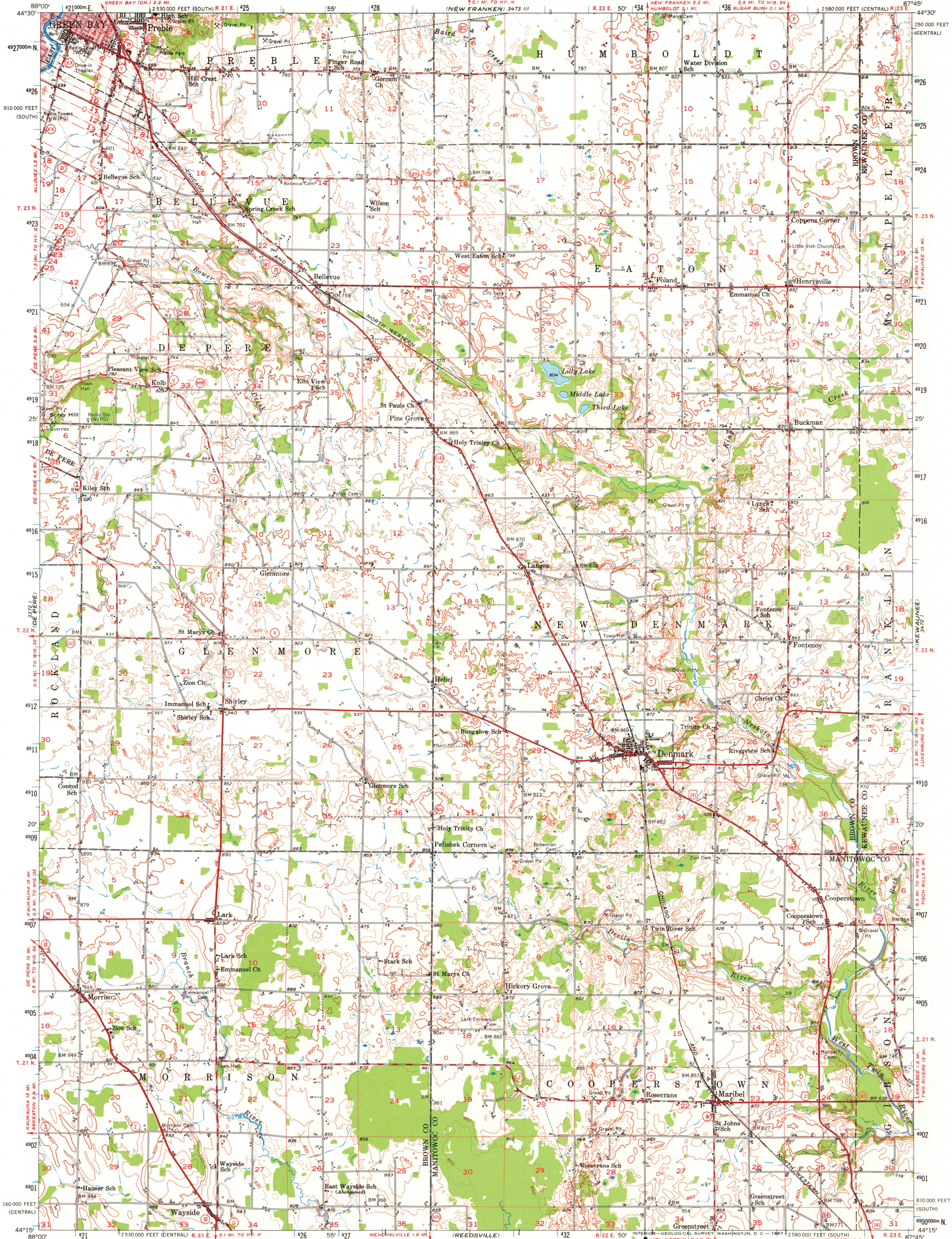
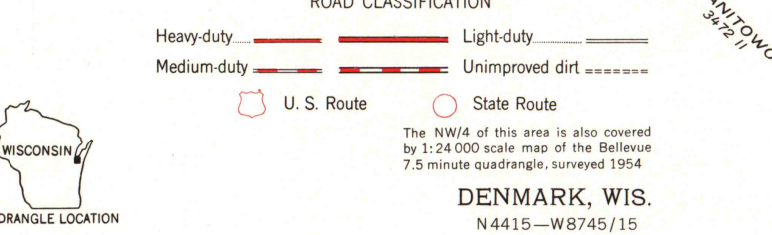
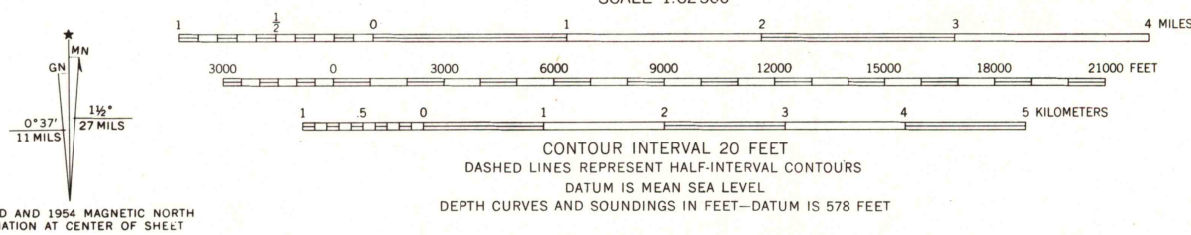


UNITED STATES  
DEPARTMENT OF THE INTERIOR  
GEOLOGICAL SURVEY

DENMARK QUADRANGLE  
WISCONSIN  
15 MINUTE SERIES (TOPOGRAPHIC)



Mapped, edited, and published by the Geological Survey  
Control by USGS and USC&GS  
Topography from aerial photographs by Kelsch plotter and by  
planetable surveys 1952 and 1954. Aerial photographs taken 1951  
Hydrography from U. S. Lake Survey Chart 725 (1:25 000)  
Polyconic projection. 1927 North American datum  
10,000-foot grids based on Wisconsin coordinate system,  
central and south zones  
Red tint indicates areas in which only  
landmark buildings are shown  
1000-meter Universal Transverse Mercator grid ticks,  
zone 16, shown in blue



The NW/4 of this area is also covered  
by 1:24,000 scale map of the Bellevue  
7.5 minute quadrangle, surveyed 1954.  
DENMARK, WIS.  
N 4415—W 8745/15

THIS MAP COMPLIES WITH NATIONAL MAP ACCURACY STANDARDS  
FOR SALE BY U. S. GEOLOGICAL SURVEY, WASHINGTON, D. C. 20242  
AND WISCONSIN GEOLOGICAL AND NATURAL HISTORY SURVEY, MADISON, WISCONSIN 53706  
A FOLDER DESCRIBING TOPOGRAPHIC MAPS AND SYMBOLS IS AVAILABLE ON REQUEST

1954

AMS 3472 IV—SERIES V761