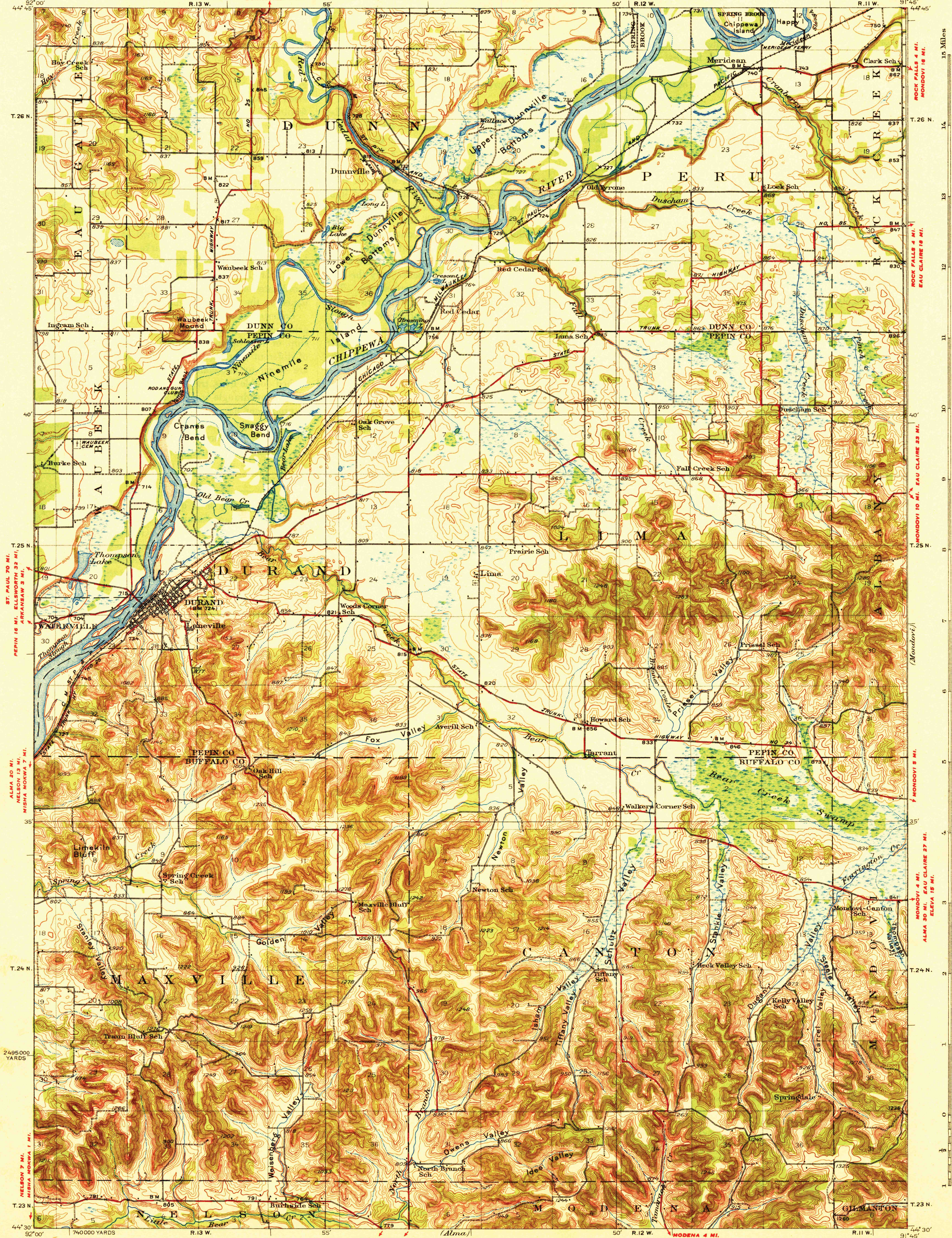


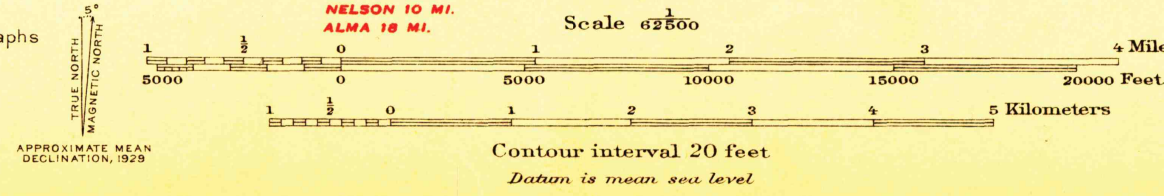
U. S. G. S.  
FILE COPY  
Inspection and Editing.



ST. PAUL 70 MI.  
PEPIN 16 MI. ELLSWORTH 33 MI.  
ALMA 20 MI. NELSON 13 MI. MISHA MOKWA 7 MI.  
NELSON 7 MI. ALMA MOKWA 1 MI.

ROCK FALLS 4 MI. MONDOVI 16 MI.  
ROCK FALLS 4 MI. MONDOVI 16 MI.  
MONDOVI 10 MI. EAU CLAIRE 23 MI.  
MONDOVI 4 MI. EAU CLAIRE 27 MI.  
ALMA 30 MI. EAU CLAIRE 27 MI.  
ELEVIA 15 MI.

Topography by J.P. Harrison, J.C. Hilliard, and W.A. Tingey  
Culture and drainage in part compiled from aerial photographs  
taken by Air Corps, U.S. Army  
Control by U.S. Geological Survey  
Surveyed in 1921, 1928, and 1929



Polyconic projection, North American datum  
5000 yard grid based upon U.S. zone system, C

HARD IMPERVIOUSLY SURFACED ROADS  
OTHER MAIN TRAVELED ROADS  
1931

DURAND, WIS.  
Editor of 1932  
MAY 12 1932 (3630)  
2627:0200;749; 3630

U. S. G. S.  
FILE COPY  
Inspection and Editing.