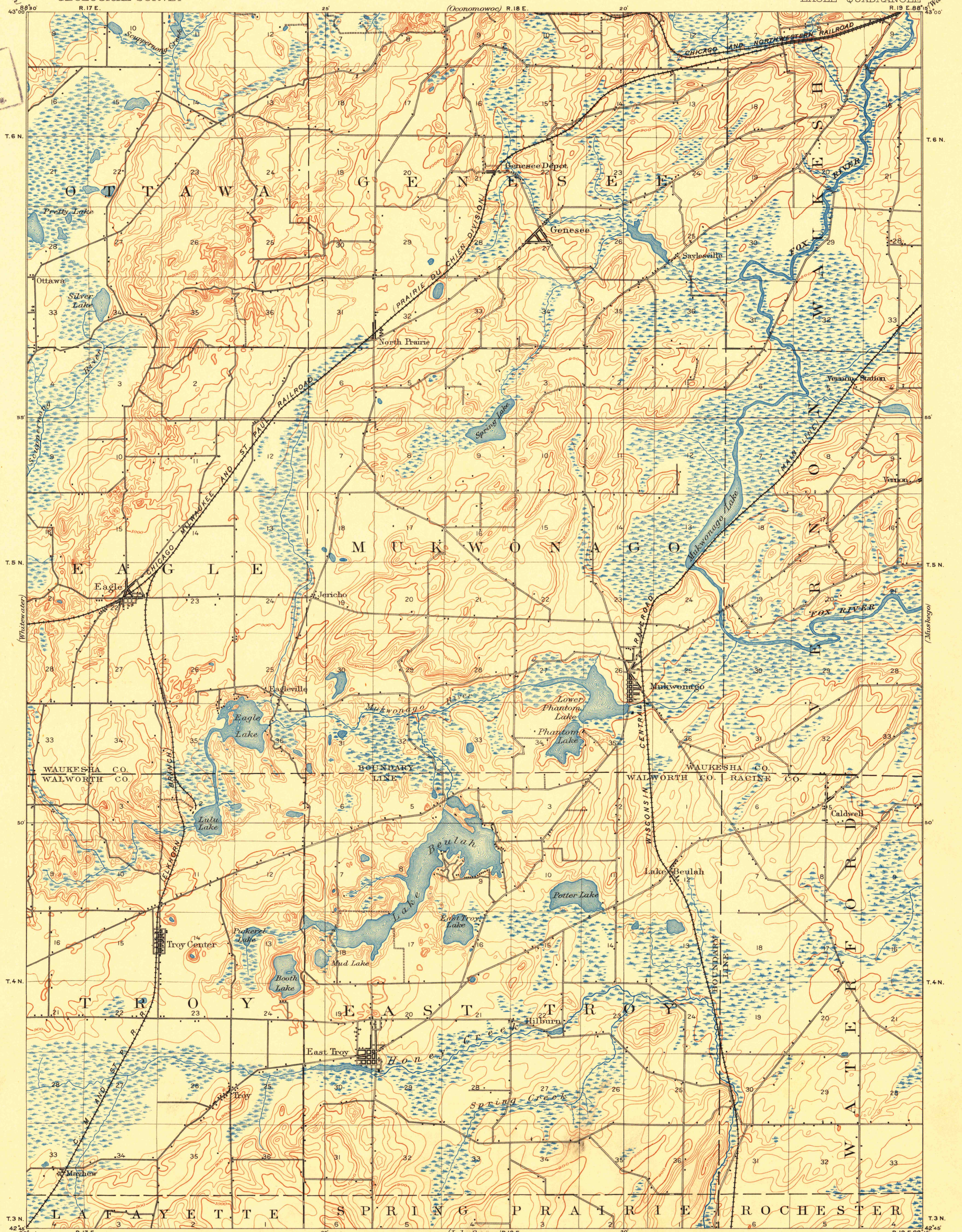


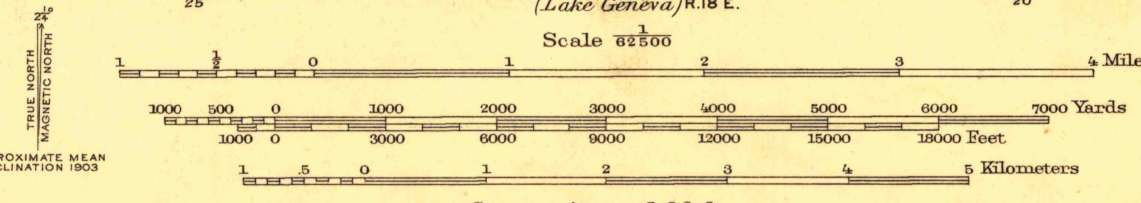
UNITED STATES
DEPARTMENT OF THE INTERIOR
GEOLOGICAL SURVEY

WISCONSIN
EAGLE QUADRANGLE
R. 19 E. 88 W.

U.S.G.S.
FILE COPY
Inspection and Editing.



Henry Gannett, Chief Topographer.
Jno. H. Renshaw, Geographer in charge.
Triangulation by the U.S. Coast and Geodetic and Lake Surveys.
Topography by Van H. Manning Jr.
Surveyed in 1883.
Revised in 1903 under direction of H. M. Wilson, Geographer.
Robert Muldrow, Topographer in charge, by H. L. McDonald.



Edition of April 1906, reprinted 1950.
Polyconic projection, North American datum
This map made from surveys without spirit
level control

EAGLE, WIS.
N4245-W8815/5

FOR SALE BY U.S. GEOLOGICAL SURVEY, WASHINGTON 25, D. C.
A FOLDER DESCRIBING TOPOGRAPHIC MAPS AND SYMBOLS IS AVAILABLE ON REQUEST

U.S.G.S.
FILE COPY
Inspection and Editing.

NOV 15 1950
2145