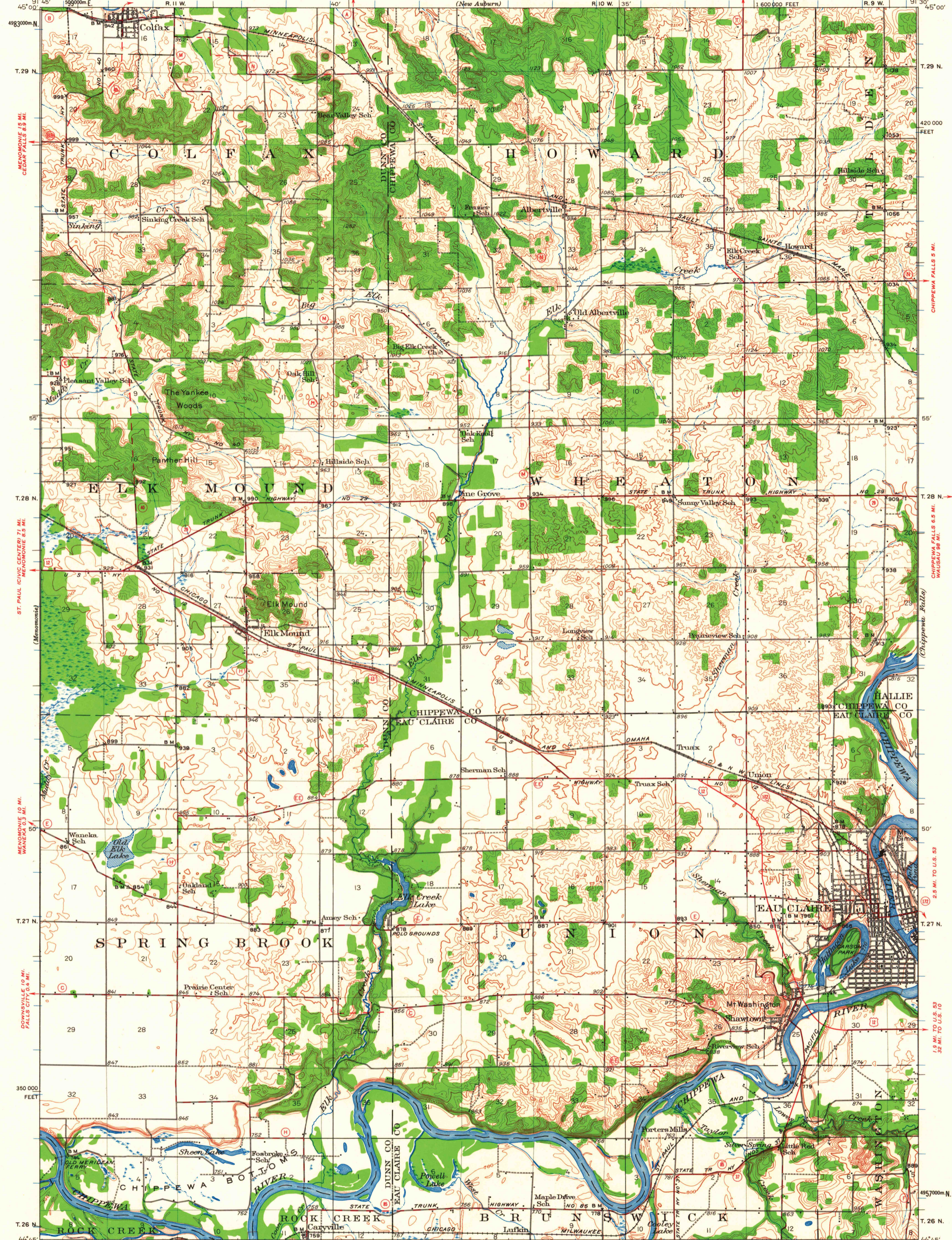
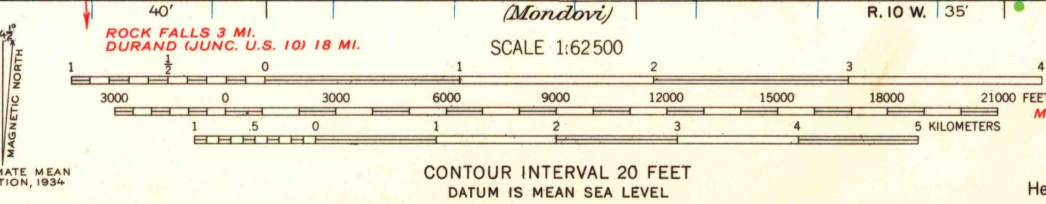


UNITED STATES
DEPARTMENT OF THE INTERIOR
GEOLOGICAL SURVEY

WISCONSIN
ELK MOUND QUADRANGLE



Topography by J.G. Staack, J.C. Hilliard, W.A. Tingey, J.A. Law, H.F. Leo, A.W. Thomas, C.E. Weishauple, and A.H. Hintze. Culture and drainage in part compiled from aerial photographs taken by Air Corps, U.S. Army. Control by U.S. Geological Survey. Surveyed in 1928 and 1934. Chippewa River surveyed in 1928 in cooperation with the War Department.



Polyconic projection. 1927 North American datum. 10,000-foot grid based on Wisconsin (Central) rectangular coordinate system. 1000-meter Universal Transverse Mercator grid ticks, zone 15, shown in blue.

ROAD CLASSIFICATION
Heavy-duty ——— Light-duty ———
Medium-duty ——— Unimproved dirt ———

U.S. Route —○— State Route —○—

ELK MOUND, WIS.
N4445-W9130/15
1934

FOR SALE BY U.S. GEOLOGICAL SURVEY, WASHINGTON, D. C. 20242
AND WISCONSIN GEOLOGICAL AND NATURAL HISTORY SURVEY, MADISON, WISCONSIN 53706
A FOLDER DESCRIBING TOPOGRAPHIC MAPS AND SYMBOLS IS AVAILABLE ON REQUEST

USGS
Historical File

U.S.G.S.
FILE COPY
TOPOGRAPHIC DIVISION

1760
OCT 10 1966