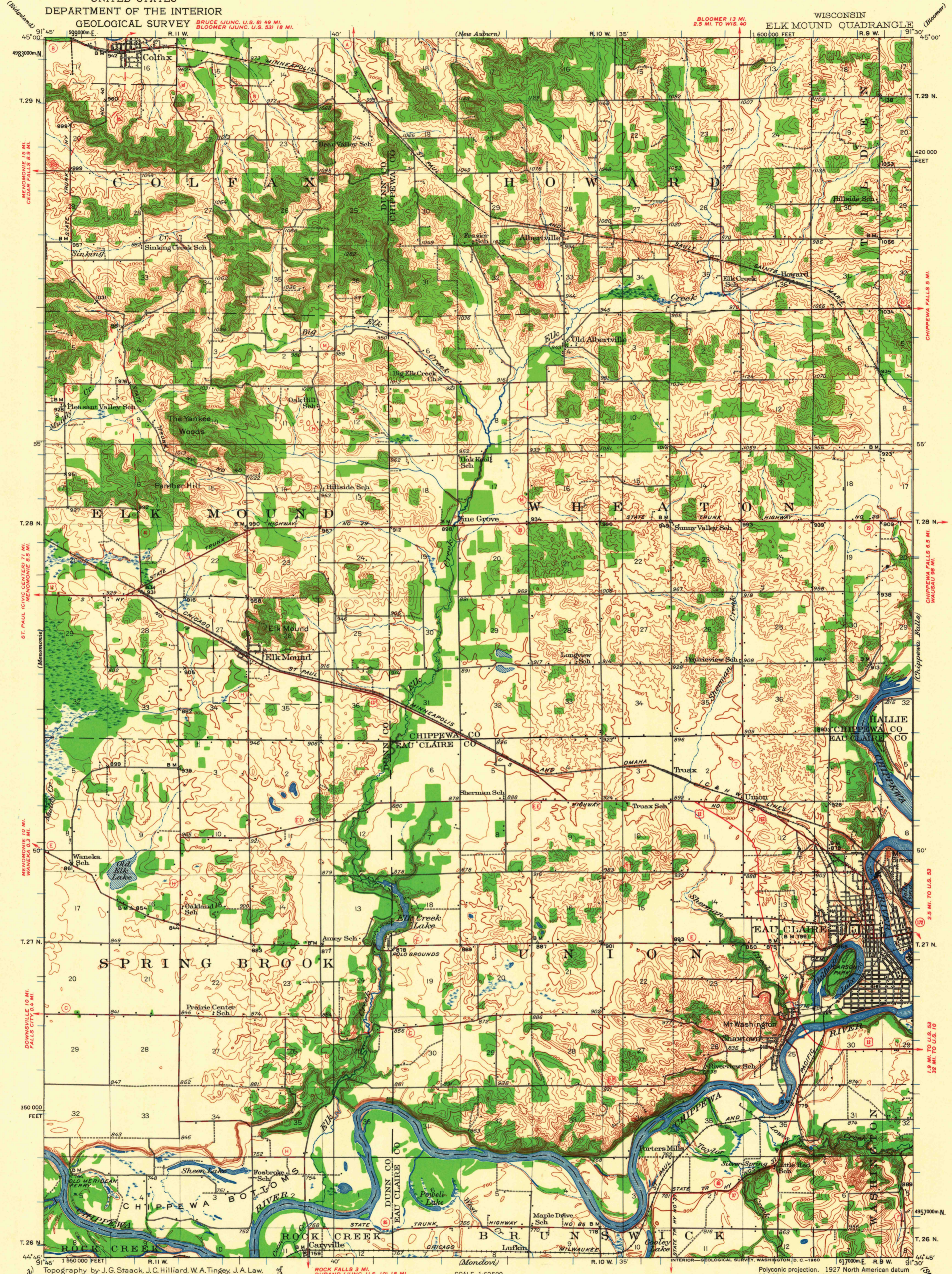
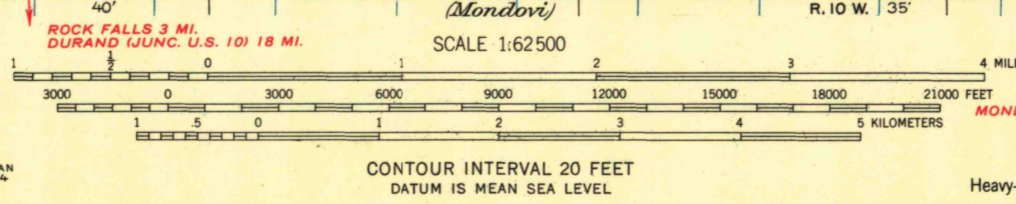


UNITED STATES
DEPARTMENT OF THE INTERIOR
GEOLOGICAL SURVEY

WISCONSIN
ELK MOUND QUADRANGLE



Topography by J. G. Staack, J. C. Hilliard, W. A. Tingey, J. A. Law, H. F. Leo, A. W. Thomas, C. E. Weishapple, and A. H. Hintze. Culture and drainage in part compiled from aerial photographs taken by Air Corps, U.S. Army. Control by U.S. Geological Survey. Surveyed in 1928 and 1934. Chippewa River surveyed in 1928 in cooperation with the War Department.



Scale: 1:62,500
Datum: MEAN SEA LEVEL
Contour Interval: 20 FEET

ROAD CLASSIFICATION

Heavy-duty	Light-duty
Medium-duty	Unimproved dirt
U.S. Route	State Route

FOR SALE BY U. S. GEOLOGICAL SURVEY, WASHINGTON 25, D. C.
A FOLDER DESCRIBING TOPOGRAPHIC MAPS AND SYMBOLS IS AVAILABLE ON REQUEST

USGS
Historical File
Topographic Division

U.S.G.S.
FILE COPY
TOPOGRAPHIC DIVISION
JUN - 6 1960
1005