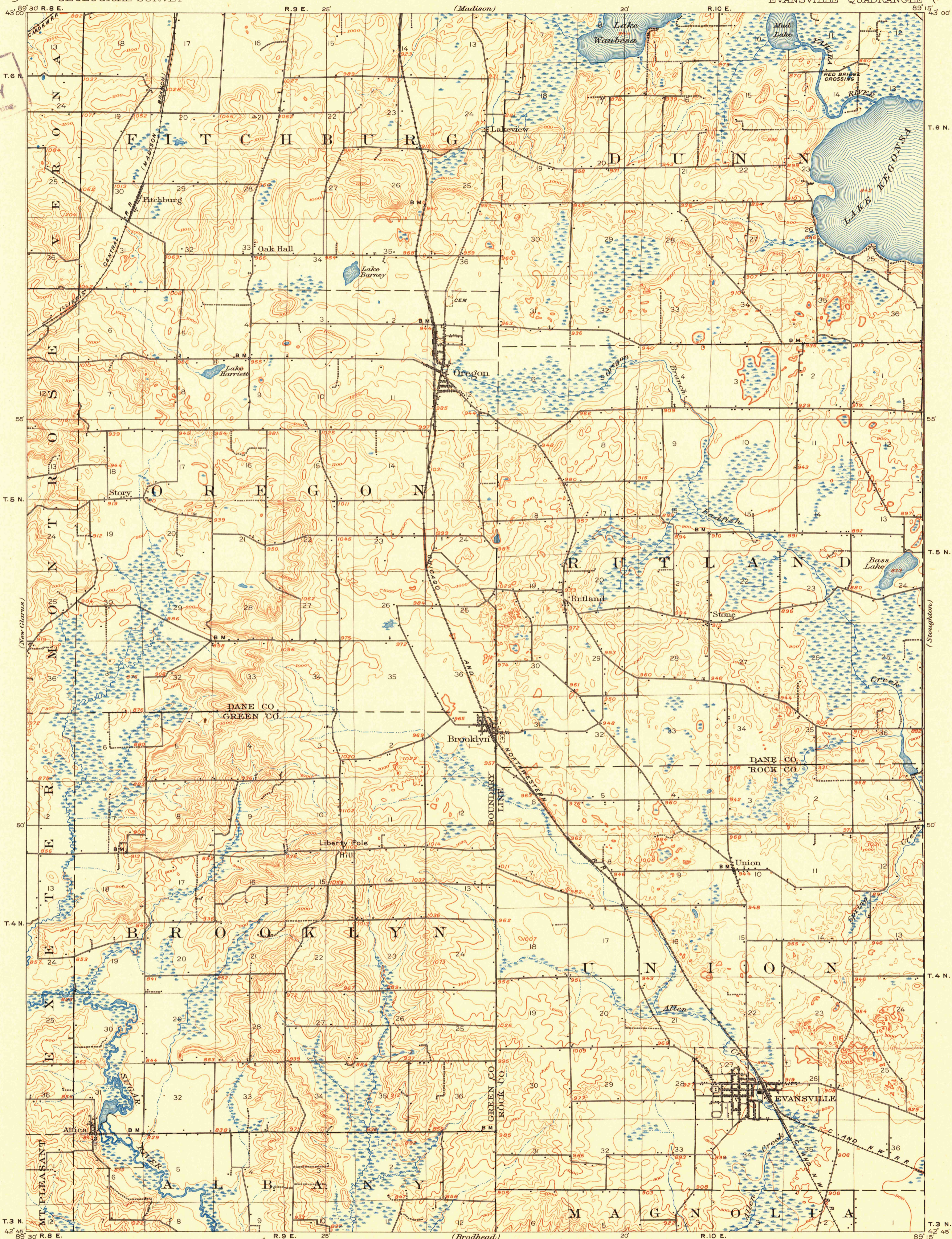
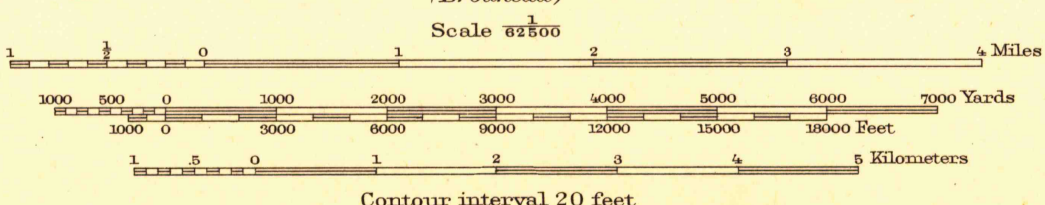


U.S.G.S
FILE COPY
Topographic and Hydrographic



H.M. Wilson, Geographer.
Robert Muldrow, in charge of section.
Topography by A.T. Fowler and J.G. Staack.
Triangulation by the U.S. Coast and Geodetic Survey.
Surveyed in 1904.



Polyconic projection. North American datum.

EVANSVILLE, WIS.
Edition of 1906,
reprinted 1950.
N4245-W8915/15

U.S.G.S
FILE COPY
Topographic and Hydrographic

Historical File
Topographic Division

NOV 21 1950 2145