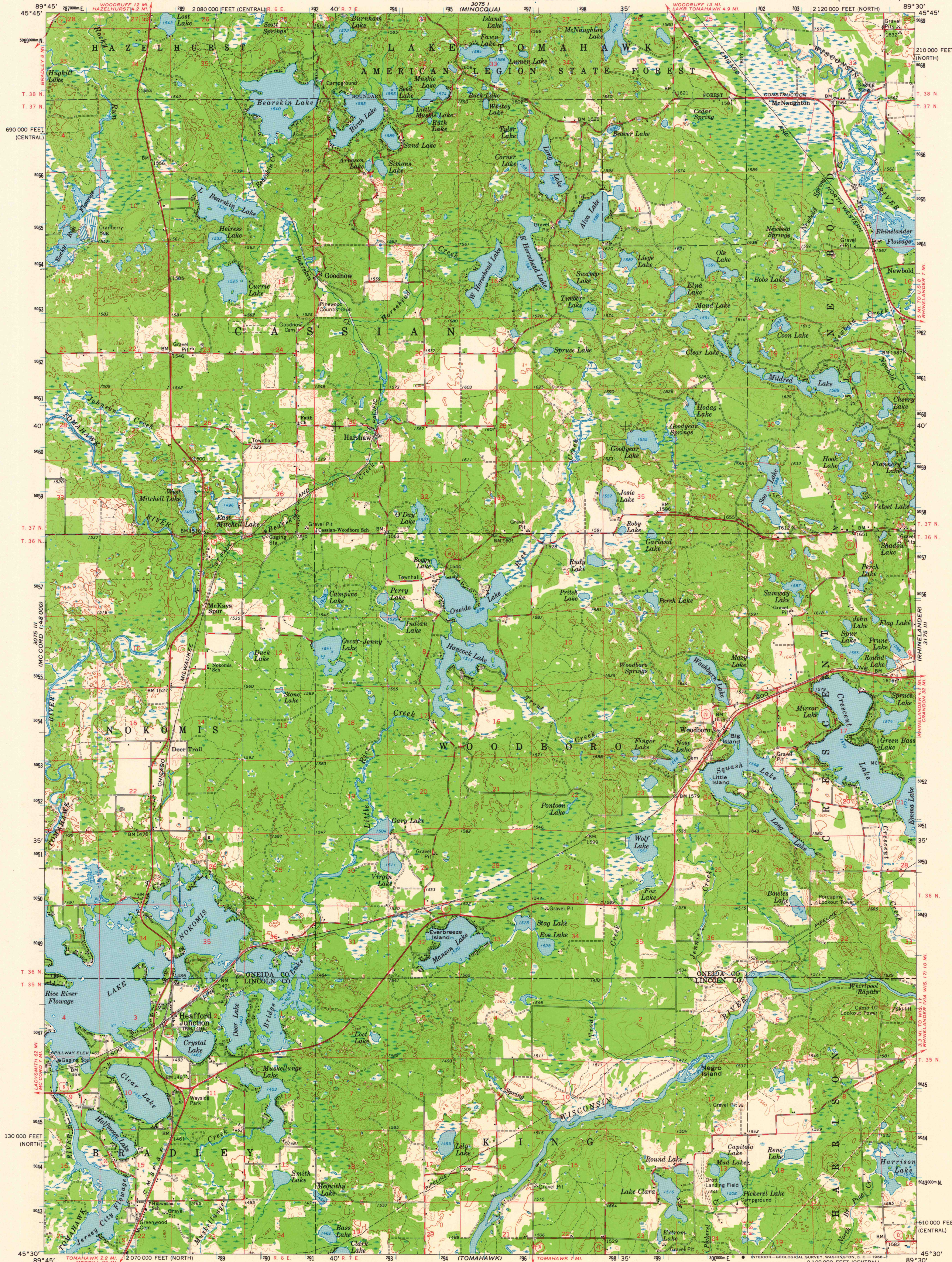


UNITED STATES  
DEPARTMENT OF THE INTERIOR  
GEOLOGICAL SURVEY

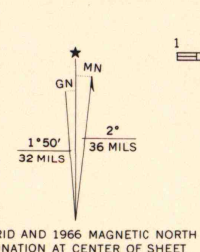
STATE OF WISCONSIN  
STATE HIGHWAY COMMISSION  
GEOLOGICAL AND NATURAL HISTORY SURVEY

HEAFFORD JUNCTION QUADRANGLE  
WISCONSIN  
15 MINUTE SERIES (TOPOGRAPHIC)



Maped, edited, and published by the Geological Survey  
in cooperation with the Wisconsin Highway Commission  
and Wisconsin Geological and Natural History Survey  
Control by USGS and USCGS

Topography by photogrammetric methods from aerial  
photographs taken 1964. Field checked 1966  
Supersedes Cassian planimetric map dated 1939  
Polyconic projection. 1927 North American datum  
10,000-foot grids based on Wisconsin coordinate system,  
north and central zones  
1000-meter Universal Transverse Mercator grid ticks,  
zone 16, shown in blue



CONTOUR INTERVAL 20 FEET  
DATUM IS MEAN SEA LEVEL

THIS MAP COMPLIES WITH NATIONAL MAP ACCURACY STANDARDS  
FOR SALE BY U.S. GEOLOGICAL SURVEY, WASHINGTON, D. C. 20242  
AND BY THE WISCONSIN GEOLOGICAL AND NATURAL HISTORY SURVEY, MADISON, WISCONSIN 53706  
A FOLDER DESCRIBING TOPOGRAPHIC MAPS AND SYMBOLS IS AVAILABLE ON REQUEST



ROAD CLASSIFICATION  
Heavy-duty ——— Light-duty ———  
Medium-duty ——— Unimproved dirt ———  
U.S. Route ——— State Route ———

HEAFFORD JUNCTION, WIS.  
N4530-W8930/15

1966

AMS 3075 II-SERIES V761

JUL 26 2005

ARTHUR H. ROBINSON MAP LIBRARY  
University of Wisconsin-Madison

1966  
copy  
1-1