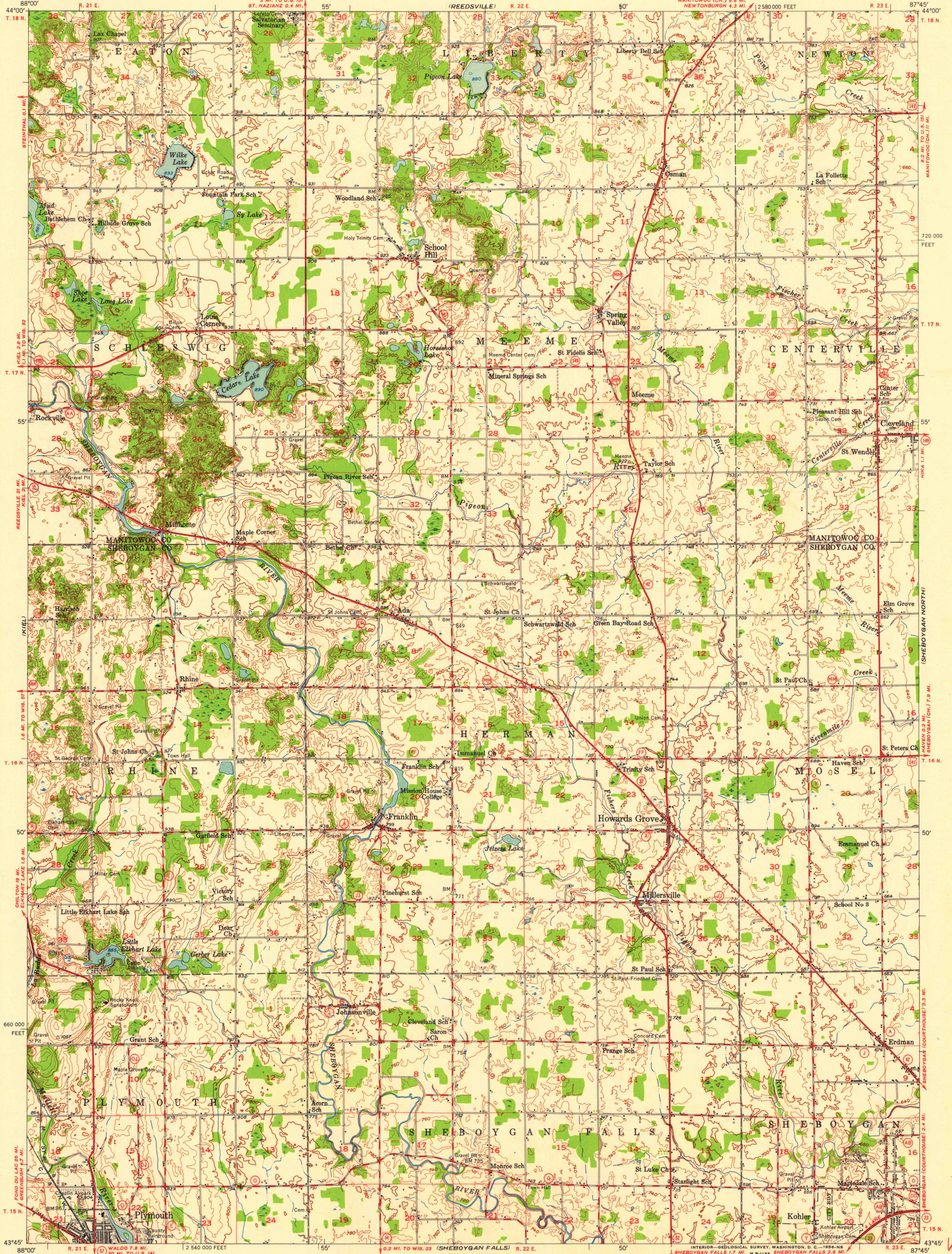


UNITED STATES
DEPARTMENT OF THE INTERIOR
GEOLOGICAL SURVEY

HOWARDS GROVE QUADRANGLE
WISCONSIN
15 MINUTE SERIES (TOPOGRAPHIC)



1954
Copy
1-1

Mapped, edited, and published by the Geological Survey

Control by USGS and USC&GS

Compiled in 1955 from 1:24 000 scale maps of the St. Wendel, School Hill, Franklin, and Howards Grove 7.5 minute quadrangles. Topography from aerial photographs by Kelsch plotter. Aerial photographs taken 1951-1952. Field check 1954.

Polyconic projection. 1927 North American datum. 10,000-foot grid based on Wisconsin coordinate system, south zone.

SCALE 1:62 500

0 1 2 3 4 MILES

0 3000 6000 9000 12000 15000 18000 21000 FEET

0 1 2 3 4 5 KILOMETERS

CONTOUR INTERVAL 20 FEET
DATUM IS MEAN SEA LEVEL

ROAD CLASSIFICATION

Heavy-duty ——— Light-duty ———
Medium-duty ——— Unimproved dirt ———

U. S. Route ——— State Route ———

This area is also covered by 1:24 000 scale maps of St. Wendel, School Hill, Franklin, and Howards Grove 7.5 minute quadrangles, field check 1954.

HOWARDS GROVE, WIS.
N4345-W8745/15

TRUE NORTH
MAGNETIC NORTH
APPROXIMATE MEAN
DECLINATION, 1954

THIS MAP COMPLIES WITH NATIONAL MAP ACCURACY STANDARDS
FOR SALE BY U. S. GEOLOGICAL SURVEY, WASHINGTON 25, D. C.
AND BY THE WISCONSIN GEOLOGICAL AND NATURAL HISTORY SURVEY, MADISON 6, WISCONSIN
A FOLDER DESCRIBING TOPOGRAPHIC MAPS AND SYMBOLS IS AVAILABLE ON REQUEST



UNIVERSITY OF WISCONSIN
Department of Geography

1954
FOR LIBRARY USE
ONLY